

AMERICA'S PREMIER EDUCATIONAL CHAMBER MUSIC COMPETITION

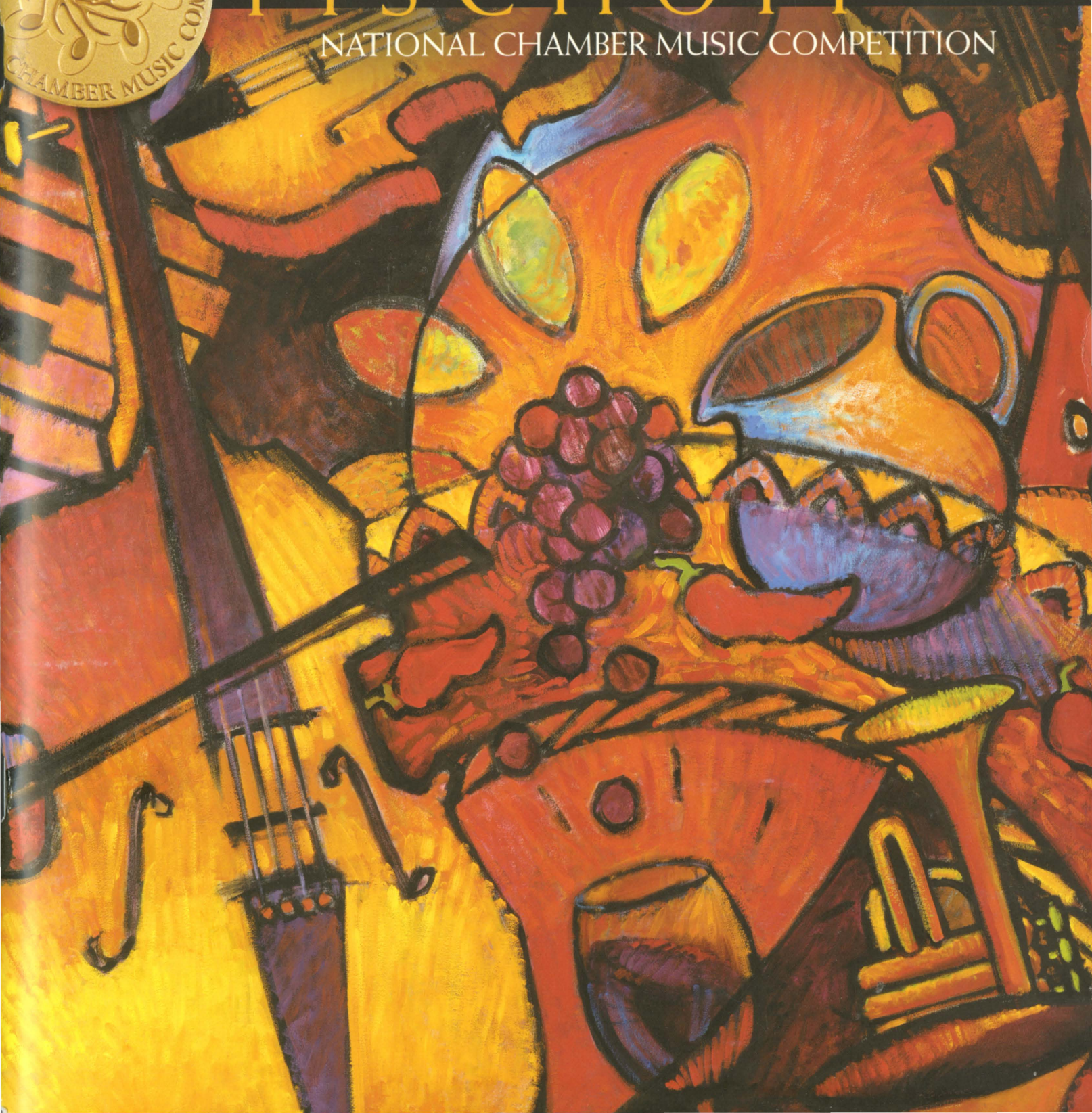
MAY 5, 6 & 7, 2006



THE 33<sup>rd</sup> ANNUAL

# FISCHOFF

NATIONAL CHAMBER MUSIC COMPETITION



# THE BARD COLLEGE CONSERVATORY OF MUSIC

An integrated double-degree program in  
music and the liberal arts and sciences

**NEW IN 2006–2007**

## **Vocal Arts Graduate Program**

*Dawn Upshaw*

## **The Conductors Institute**

*Harold Farberman*

## **Composition Program**

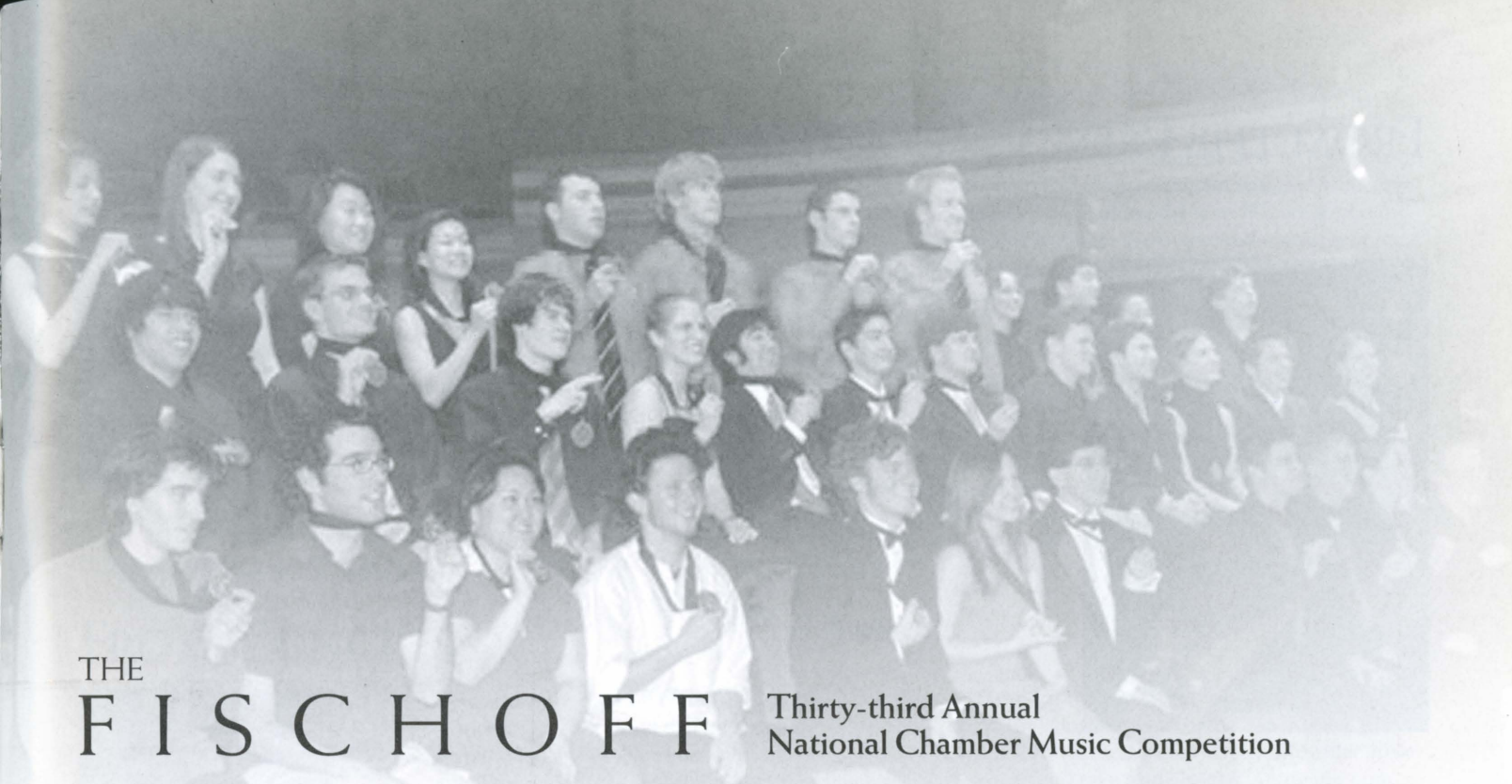
*Joan Tower and  
George Tsontakis*

### **CONSERVATORY FACULTY INCLUDE**

**VIOLIN** Ani Kavafian, Ida Kavafian, Weigang Li,  
Laurie Smukler, Arnold Steinhardt **VIOLA** Steven  
Tenenbom, Michael Tree, Ira Weller **CELLO**  
Sophie Shao, Peter Wiley **DOUBLE BASS** Marji  
Danilow **PIANO** Melvin Chen, Jeremy Denk, Peter  
Serkin **PIANO MASTER CLASSES** Richard Goode  
**OBOE** Laura Ahlbeck, Richard Dallessio **FLUTE**  
Tara Helen O'Connor **CLARINET** Laura Flax,  
David Krakauer **BASSOON** Marc Goldberg  
**HORN** Julie Landsman, Jeffrey Lang  
**TROMBONE** John Rojak **TRUMPET** Mark Gould  
**COMPOSITION** Joan Tower, George Tsontakis  
**VOCAL ARTS** Dawn Upshaw **CONDUCTING**  
*Harold Farberman*  
**IN RESIDENCE** Colorado Quartet, Da Capo  
Chamber Players

TO LEARN MORE, VISIT  
[www.bard.edu/conservatory](http://www.bard.edu/conservatory)  
e-mail [conservatory@bard.edu](mailto:conservatory@bard.edu) or call 845-758-7196

**Robert Martin**, Director  
**Melvin Chen**, Associate Director



# THE FISCHOFF Thirty-third Annual National Chamber Music Competition

Welcome to the Fischoff .....	2	The 33rd Annual Competition .....	21
The Fischoff Staff .....	5	Junior Quarterfinal Jurors .....	22
Competition Schedule of Events .....	6	Semifinal Jurors .....	24
Welcome to Notre Dame .....	8	Medal and Scholarship Sponsors .....	26
Campus Map .....	9	Junior Quarterfinal Repertoire .....	31
The Fischoff National Chamber Music Association .....	10	Senior Semifinal Wind Repertoire .....	39
Financial Retrospective .....	11	Senior Semifinal String Repertoire .....	45
Fischoff's Winter Gala .....	12	Supporting the Fischoff	
Fischoff Arts-in-Education Residency .....	14	Fischoff National Advisory Council .....	52
Artist-of-the-Month .....	16	Fischoff Board of Directors .....	53
Chamber Music Mentoring Project .....	17	Fischoff Volunteers .....	54
Peer Ambassadors for Chamber Music .....	18	The Fischoff Society .....	56
Soirees .....	19	Corporate and Foundation Benefactors .....	58
Winner's Tour .....	20	History of Fischoff Winners .....	60
		Geoffroy Prize Winners .....	61
		Fischoff Alumni: Where Are They Now? .....	62
		From the Executive Director .....	64

## A Note of Acknowledgement and Thanks

The Fischoff Chamber Music Association Board of Directors and Staff are honored and delighted to acknowledge the contributions of the following businesses, academic institutions, and individuals. We are pleased to have the opportunity to thank them publicly:

The University of Notre Dame for providing office space, general assistance and hosting the 2006 Fischoff Competition.

RHB/The Agency for graciously providing board meeting space.

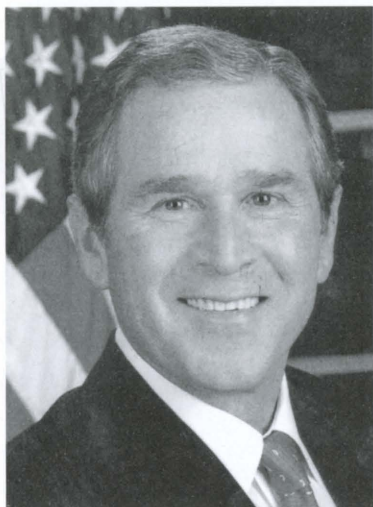
Mark Kelley, Professor of Communication and Journalism, University of Maine, who serves as Master of Ceremonies for the Finals and Awards Ceremony.

Michael Murphy Design Inc. for program layout.

Program cover painting  
courtesy of artist Kathryn Barbin  
kathrynbarbin@netzero.com

Fischoff National Chamber Music Association  
303 Brownson Hall, Notre Dame, IN 46556  
Phone: 574-631-0984 info@fischoff.org  
www.fischoff.org

# FROM THE PRESIDENT OF THE UNITED STATES...



THE WHITE HOUSE  
WASHINGTON

March 1, 2006

I send greetings to those gathered for the 2006 Fischhoff National Chamber Music Competition.

Music plays a vital role in exploring ideas, expressing emotions, and conveying the diversity of the human experience. By capturing the imagination of our citizens, music has influenced our cultural heritage and created some of our country's most treasured art forms. This event provides an opportunity to celebrate musical traditions that bring joy to people around the world and speak to every heart.

I appreciate all those involved for supporting the arts and helping preserve America's rich musical legacy for future generations. Your efforts advance music appreciation and enhance the creative spirit of our Nation.

Laura and I send our best wishes.

## FROM THE GOVERNOR...



*Greetings!*

As Governor it is a pleasure to welcome you to the 2006 Fischhoff National Chamber Music Competition and to congratulate those who have been selected to participate.

Music is an important part of our culture that brings joy to many. This competition provides a forum for young musicians to showcase their talents and be rewarded for their hours of hard work and dedication.

I wish every participant the best as they perform and commend the parents and teachers who have supported them along the way. We are proud to welcome and host these talented young people who are dedicated to the pursuit of excellence and carry with them an enthusiastic spirit.

Sincerely,

Mitch Daniels  
Governor, State of Indiana



## FROM CONGRESS...



Welcome to the Fischhoff National Chamber Music Competition. I am proud that you have come to northern Indiana to share your musical talents with us and the nation. I hope that this experience will be one that you and your family will remember for the rest of your lives.

Since its start in 1973, Fischhoff has grown into a world class organization, striving to provide opportunities for education and development of young people. Now in the organization's 33rd year, this has become a nationally acclaimed chamber music competition. Over these next few days you will be competing against some of the brightest young musicians the world has to offer, and you should be proud to be one of them.

I hope you and your family will take time to enjoy the competition, and to enjoy staying in North Central Indiana. As the congressman from this district, I take pride in everything our community has to offer. We have wonderful museums, restaurants, historical sites, and other attractions that I am sure you will enjoy. Our best attraction, however, is our citizens, and as one, I would like to congratulate you on making it this far and wish you the best of luck in your future.

Yours truly,

Chris Chocola  
Member of Congress

Congress of the United States  
House of Representatives

## FROM THE MAYOR...



*Welcome!*

On behalf of the City of South Bend, I am pleased to offer a warm welcome to all attending the 2006 Fischhoff National Chamber Music Competition.

The Fischhoff National Chamber Music Competition, founded in 1973 by Joseph E. Fischhoff, has been attracting the finest young chamber musicians around the world to South Bend for the past thirty-three years.

This competition enjoys an international reputation as one of the most significant prizes for emerging chamber musicians. Congratulations on being selected to perform in this prestigious competition.

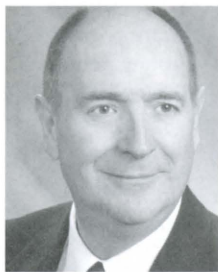
During your stay, I hope that you will have an opportunity to visit the many attractions and facilities that make South Bend unique. You will see that there is truly something for all ages and interests. Friendly people eager to help, combined with top notch facilities and attractions, will guarantee that your visit to our City will be memorable. On behalf of all of the citizens of South Bend, I say welcome, and I hope that you will visit again soon.

Sincerely,

Stephen J. Luecke  
Mayor, City of South Bend



## LETTER FROM THE PRESIDENT, DOUG MICK...



*Dear Fischhoff participants,  
friends, and sponsors,*

Welcome to the 33rd Annual Fischhoff Competition. Once again we are excited about the venue established last year. The Grand Prize winner will be determined in a final competition concert, which will be held in the fabulous Leighton Concert

Hall. As last year, this adds excitement to our program, allows our musicians the opportunity to play in a world-class facility, and provides outstanding entertainment to our audience.

Your continued affiliation with the Fischhoff National Chamber Music Association is greatly appreciated. While we provide a unique competition event, we also offer important outreach programs to community children. Many of our Fischhoff competitors act as Fischhoff ambassadors by holding sessions for the youth in our area. Not only do these musicians bring fine performances to children who may otherwise have no exposure to this type of music, but they serve as excellent role models for these students. Your support helps us continue to achieve the goals of Fischhoff; providing a great competition and educational outreach programs.

Again welcome, thank you and have a great performance weekend!

Douglas M. Mick  
President

## FROM THE ARTISTIC DIRECTOR...



Chamber music is an amazing art form. It is a medium that many of the greatest composers chose for their most personal and arguably their greatest music. It takes amazing amounts of collaboration and teamwork to play at a high technical level. To be able to forge an interpretation that blends the often divergent ideas of the performers with those of the composer

and to then successfully communicate with an audience is no small accomplishment. Developing the skills involved has a positive impact on so many aspects of life beyond the music. Those participating in the Junior Division get a great head start on this aspect of their development. There was a time when it seemed unimaginable that Joseph Fischhoff would have died before some of the musicians performing in the Fischhoff Competition were born. Yet, as I prepare for my 26th Fischhoff, I recently realized that Joe Fischhoff only saw the first 18 years before he passed away in 1992. I feel privileged to have known him well. His presence still seems very close to me. His vision of a competition whose purpose was to have a positive impact on all of those who participated remains my primary focus as Artistic Director. When important decisions that affect the direction of this competition need to be made, one thing I always take into account is how I imagine Joe would have felt about the matter. Our organization tries to go beyond what others would do for the musicians. The Competition has grown into an organization that makes great efforts to have an impor-

tant impact on the arts of the region and has attained its goal of helping to encourage young people to play chamber music and excel at it. The outstanding list of prize winners who go on to significant careers is one way of measuring our success. But, there are by now thousands of musicians who have been a part of the Fischhoff who have not left with the Grand Prize. It is our goal that all who participate feel that preparing for and attending the Fischhoff helps them in some way.

To the Performers: I urge all ensembles to take as much as you can from this weekend. Hopefully you will be one of the prize winning ensembles. But, there is so much you can do to learn and improve while you are here. Do so by enjoying your opportunity to perform, listening to other ensembles in both the Junior and Senior Divisions to gain perspective on your own playing, and by getting to know other musicians who are here. Perhaps in the future you will be playing with someone you first met here. Ultimately, you may or may not agree with the difficult decisions the jury must make. Remember that even in your own ensembles you undoubtedly do not always agree with your colleagues. Playing your best is the only thing you can control. Enjoying yourself and staying focused on the music is the best way to achieve that. Best of luck to all of you.

Thomas Rosenberg  
Artistic Director

# THE FISCHOFF STAFF



**Ann Divine**, Executive Director, began her work with the Fischhoff Association as Competition Manager in 1994. She was appointed Executive Director shortly after the completion of the 1994 Competition. Ms. Divine received her undergraduate degree in Music Education from Indiana University South Bend, and her

Master of Arts degree in Music History from Andrews University. She taught music history and applied voice at various area colleges and universities for more than twenty years. Ms. Divine is a member of the South Bend Chamber Singers, a 28-voice ensemble specializing in 20th Century music. She is on the Community Advisory Council of WNIT Public Television and is an avid gardener.

Cellist **Thomas Rosenberg**, Artistic Director of the Fischhoff National Chamber Music Competition since 1981, is nationally known as a dynamic teacher, chamber music coach, and performer. He is on the faculties of the University of Minnesota as Coordinator of the String Chamber Music Program and coach of numerous ensembles and at Macalester and Carleton Colleges teaching cello. He maintains a busy private studio of cellists and chamber ensembles and is Recipient of the 2003-4 "Master Studio Teacher Award" from the Minnesota chapter of the American String Teachers Association and the 2004-5 McKnight Performing Artist Fellowship Award. He received top chamber music prizes at the Munich (Germany), Portsmouth (England), and Chicago's "Discovery" Competitions and is a three-time Naumburg Award finalist. Previously, he was a founding member of the Chester String Quartet and was on the faculty of Indiana University South Bend from 1980-1998. He has performed and taught at many summer festivals including Aspen and the Tanglewood Institute and has served as Associate Director and on the teaching faculty of "The Quartet Program." Tom is a graduate of Oberlin and the Eastman School of Music where he was teaching assistant to both Paul Katz and Laurence Lesser. Other teachers include Richard Kapuscinski, Alan Harris, Alta Mayer, and for chamber music, members of the Budapest, Juilliard, Tokyo, Guarneri, and Cleveland Quartets.



**Carrie Lehman**, Quarterfinal Manager, was formerly Fischhoff's Administrative Assistant from 1995-1997, while an undergraduate student at Indiana University South Bend. She graduated from Spring Arbor University in 1999, with a Bachelor's degree in Business Administration. She is currently employed

as a Client Service Associate at Mesirow Financial in Chicago.



**Amanda VanHaute**, Competition Assistant, is a 2001 graduate of Valparaiso University with a degree in Music Business. Ms. VanHaute has been with Fischhoff since the 2000 competition. A violinist and violist, she is a member of the Chiaroscuro String Quartet. Currently, she is the Retail Showroom Manager of Shar Products

Company in Ann Arbor, Michigan and also works as a freelance musician.



**Miki Strabley** joined Fischhoff as Competition and Program Manager in August 2000. She received her Bachelor of Arts degrees in English Literature and Political Science at Saint Mary's College in Notre Dame, Indiana. On May 21, she will graduate from the University of Notre Dame with a Master's Degree in Nonprofit

Administration. Non-Fischhoff activities include chairing the ceremony committee for Notre Dame's ACS/ Relay for Life, participating as starting guard on husband Chris Temple's bookstore basketball team, playing the trumpet and attempting to keep pace with their 18 month old daughter, Molly Clare, and 6 year old dog, Moose.



**Pam O'Rourke** joined Fischhoff as Education and Project Director in July 2004. Long-time friend and volunteer of Fischhoff, Pam has been Community Relations Coordinator at Little Professor and Borders bookstores for 11 years and been active in theater, music and art. She attended Eastern Montana College and has three

daughters. Outside interests include hiking, gardening, and reading.



**Hannah Kim** has many years of accounting and finance experience with the Westpac Banking Corporation, Australia's largest bank. Born in South Korea, she graduated from Hankuk University of Foreign Studies. She received her MS in Administration in 2004 from the University of Notre Dame. She is a Certified

Public Accountant. In college, she was a member of the classical music club as well as a long-serving member of the church choir.



**Tessa Bysong**, Competition and Marketing Assistant, will be leaving the Fischhoff staff at the conclusion of the competition, having joined in August of 2002. She is graduating with a BBA in Management Consulting and Political Science from the University of Notre Dame and will be joining Bain & Co. in the Chicago office as an

Associate Consultant in July. She enjoys playing flute, piccolo, and piano, as well as volunteering with the Madison Center of South Bend.

# COMPETITION SCHEDULE OF EVENTS

## FRIDAY MAY 5, 2006

### Junior Quarterfinal

Leighton Concert Hall

DeBartolo Performing Arts Center

Repertoire for these groups begins on page 31.

No tickets required.

#### Morning

- 9:20 Trio Pathos
- 9:40 Bella String Quartet
- 10:00 Attacca Quartet
- 10:20 BAM Quartet
- 10:40 Amethyst Trio

#### Break

- 11:10 Beat 3
- 11:30 YAM String Quartet
- 11:50 Trio Chalumeau

#### Afternoon

- 12:10 Alethea String Quartet
- 12:30 Trio con Fuoco

#### Lunch Break

- 1:50 Temperal Trio
- 2:10 Matrka String Quintet
- 2:30 Gagliano Trio
- 2:50 Festivus Quartet
- 3:10 Luna Trio

#### Break

- 3:40 opus.
- 4:00 Ruvido String Quartet
- 4:20 Neptune Trio
- 4:40 Red Aurora String Quartet
- 5:00 Animato Trio

#### Break

- 5:30 The Bone Rangers
- 5:50 Cerberus
- 6:10 Lontano String Quartet
- 6:30 Biarritz Trio

### Senior Wind Semifinal

Washington Hall

Repertoire for these groups begins on page 39.

No tickets required.

#### Morning

- 9:30 Red Lion Brass Quintet
- 10:00 Kallima Quintet
- 10:30 Cayuga Saxophone Quartet

#### Break

- 11:15 Arundo Winds Quintet
- 11:45 Element Saxophone Quartet

#### Afternoon

- 12:15 Simpatico Quartet

#### Lunch Break

- 2:00 BAQ Quintet
- 2:30 ViM
- 3:00 Frangipani Winds

#### Break

- 3:45 Lago Flute Quartet
- 4:15 Arizona State University Saxophone Quartet
- 4:45 CINCO

### Senior String Semifinal

Decio Mainstage Theatre

DeBartolo Performing Arts Center

Repertoire for these groups begins on page 45.

No tickets required.

#### Morning

- 9:30 Wo-Men Quartet
- 10:00 Shema Trio
- 10:30 Tokai String Quartet

#### Break

- 11:15 Trio Lunaire
- 11:45 Alianza String Quartet

#### Afternoon

- 12:15 Fireborne Trio

#### Lunch Break

- 2:00 Ariel Quartet
- 2:30 Black Pearl Trio
- 3:00 Azmari Quartet

#### Break

- 3:45 Alcantara Piano Quartet
- 4:15 Kailas String Quartet





## SATURDAY MAY 6, 2006

### Senior Wind Semifinal

Washington Hall

Repertoire for these groups begins on page 39.

*No tickets required.*

#### Morning

- 9:30 Konisch Saxophone Quartet
- 10:00 Cosmopolitan Winds
- 10:30 Metroplex Brass Quintet
- 11:00 Four Corners Saxophone Quartet

### Senior String Semifinal

Decio Mainstage Theatre

DeBartolo Performing Arts Center

Repertoire for these groups begins on page 45.

*No tickets required.*

#### Morning

- 9:30 California Quartet
- 10:00 Eero Trio
- 10:30 Hyperion String Quartet
- 11:00 Manhattan Piano Trio

### Junior Quarterfinal Meeting

Leighton Concert Hall,

DeBartolo Performing Arts Center

#### Morning

8:30 a.m.

### Junior Quarterfinal Masterclasses

Assigned rooms to be announced.

#### Morning

9:00 a.m. to 11:00 a.m.

### Junior Semifinal

Leighton Concert Hall

*No tickets required.*

#### Afternoon

- 1:00 TBA\*
- 1:20
- 1:40
- 2:00
- Break
- 2:30
- 2:50
- 3:10
- 3:30
- Break
- 4:00
- 4:20
- 4:40
- 5:00

### Participants' Dinner

South Dining Hall,

University of Notre Dame

#### Evening

7:00 p.m. **Reservations required**

*(limited tickets may be available at the merchandise sales table for \$20)*

## SUNDAY MAY 7, 2006

**Tickets required.**

*Visit the box office or call 574-631-2800.*

### Senior Final

Leighton Concert Hall

DeBartolo Performing Arts Center

#### Morning

11:30 a.m. to 2:45 p.m.

### Junior Final

Leighton Concert Hall

DeBartolo Performing Arts Center

#### Afternoon

3:00 p.m. to 4:00 p.m.

### Awards Ceremony

Leighton Concert Hall

DeBartolo Performing Arts Center

#### Afternoon

4:30 p.m.

### Grand Prize Winner's Concert

*sponsored by June H. Edwards*

Leighton Concert Hall

DeBartolo Performing Arts Center

*Tickets required. (574-631-2800)*

#### Evening

7:30 p.m. to 9:00 p.m.

### Gala Reception with the Artists

Upper lobby,

DeBartolo Performing Arts Center

*Tickets required. (574-631-2800)*

#### Evening

9:00 p.m. to 10:00 p.m.

\* Twelve quarterfinalist ensembles will advance to the semifinal round on Saturday. Advancing ensembles are announced on Saturday morning at the quarterfinalist meeting.

## DEBARTOLO PERFORMING ARTS CENTER

JOIN US FOR WORLD-CLASS PERFORMANCES

ALL THE SHOWS, ALL THE DETAILS ONLINE AT  
<http://performingarts.nd.edu>  
TICKET OFFICE: (574) 631-2800

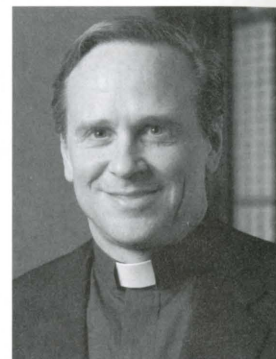


SARAH CHANG performing with the PITTSBURGH SYMPHONY ORCHESTRA on December 1, 2005

# WELCOME TO NOTRE DAME!

*Dear Fischhoff Competition  
Participants:*

On behalf of the University of Notre Dame, I welcome you to campus for the 33rd Annual Fischhoff National Chamber Music Competition. We are proud to host this event, the nation's largest chamber music competition, and pleased to have you on our campus.



The impact of the Fischhoff is significant: spanning over three decades, hosting more than 4200 young musicians, and supporting the continuation of chamber music culture.

Founded in 1973, the Fischhoff Competition allows you, among the nation's most talented young musicians, to further develop and share your musical abilities. At Notre Dame, we deeply value the contributions of music and the arts to society. We believe this competition not only allows you to develop your musical excellence, but also provides the opportunity for many others throughout the St. Joseph Valley community and the State of Indiana to gain an awareness and appreciation of the chamber music culture.

I congratulate you on the honor of being selected to compete in the Fischhoff this year. I wish you success during these three days and for years to come. Please take the time to explore campus while you are here, and know that you are welcome here anytime.

In Notre Dame,

A handwritten signature in black ink, reading "Rev. John I. Jenkins".

Rev. John I. Jenkins, C.S.C.  
President, The University of Notre Dame



## Facilities

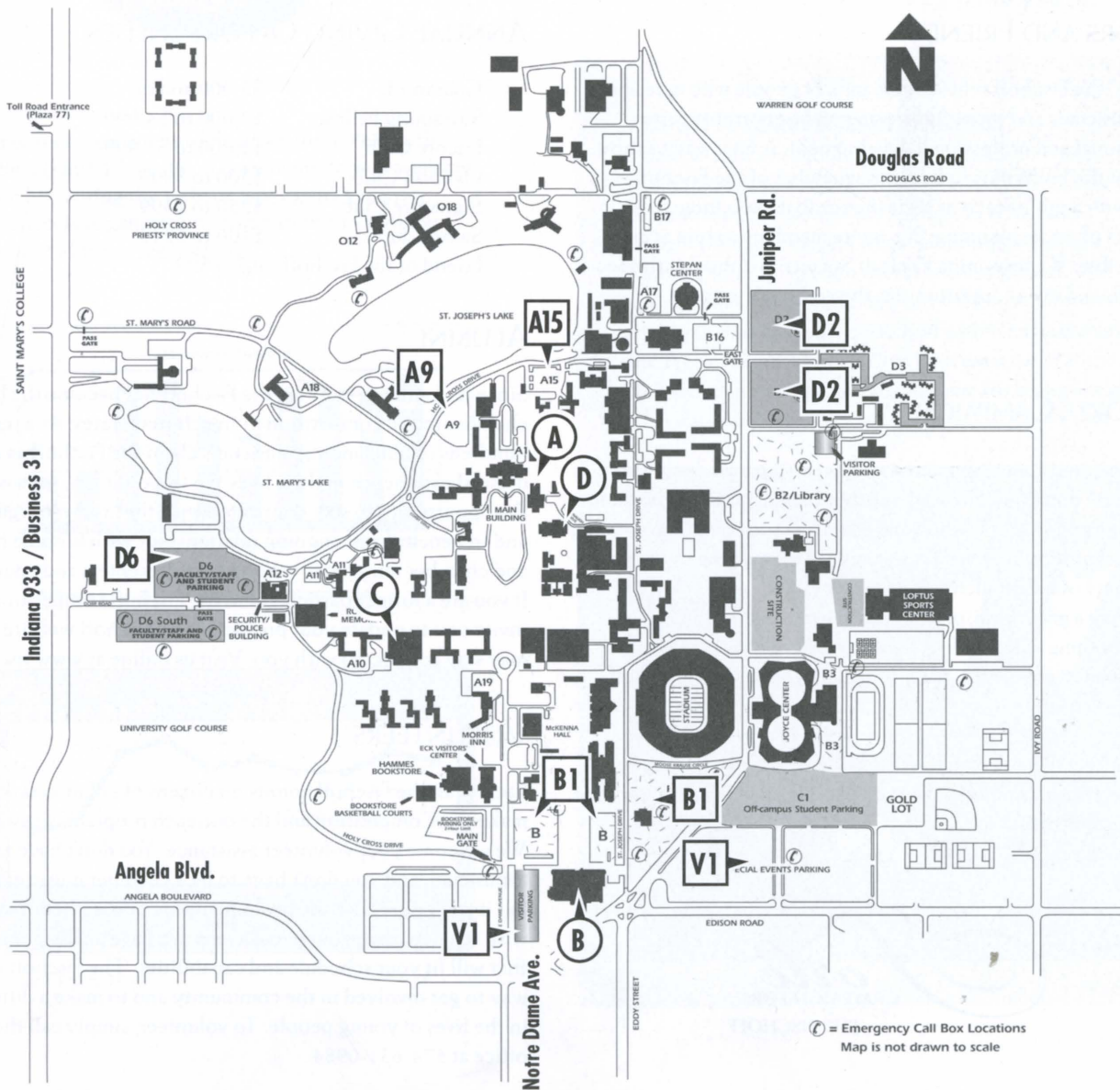
- A** Washington Hall  
(Senior Wind Semifinals)
- B** DeBartolo Performing Arts Center  
(Registration, Merchandise, Photos, Senior String Semifinals, Junior Division, Sunday Finals)
- C** South Dining Hall  
(Participants' Dinner)
- D** LaFortune Student Center  
(various eateries)

## Parking

- B1** Parking for DeBartolo
- V1** Performing Arts Center & shuttle to Washington Hall
- D2** Additional parking for Washington Hall (no shuttle service from this lot)
- D6** Parking for South Dining Hall
- A9** Saturday parking
- A15** for Washington Hall

### Please Note:

A free shuttle van for Fischoff competitors, volunteers and audience members will run continuously from the front entrance of the DeBartolo Performing Arts Center to Washington Hall throughout the day on Friday. On Saturday, vehicles will be permitted to park in A9 and A15 lots to access Washington Hall.



⊗ = Emergency Call Box Locations  
Map is not drawn to scale



# THE FISCHOFF NATIONAL CHAMBER MUSIC ASSOCIATION

## FISCHOFF'S MISSION

The Fischhoff National Chamber Music Association promotes and encourages the development, awareness and appreciation of chamber music and its role in our culture through innovative educational programs, chamber music performances and sponsorship of the Fischhoff National Chamber Music Competition.

## DONORS AND FRIENDS

Each year, the Fischhoff relies on the gifts of people who care about young musicians and providing venues and opportunities for their personal and professional development. A vital way to show support of the Fischhoff is to become a member of the Fischhoff Society with a gift of cash or securities or to make a long-term gift as part of estate planning. We invite members to join at any level possible. We recognize Fischhoff Society members with special invitations and event opportunities throughout the year.

## THE FORTÉ CAMPAIGN

While grants and annual giving campaigns can fluctuate from year to year, Forté donations provide a reliable income making it possible to plan the expansion of Fischhoff and enabling us to commit to ongoing educational programs. Several structures allow for giving to accommodate a variety of needs, such as:

- making a gift of cash, or appreciated securities;
- establishing a charitable gift annuity that will pay you income for the rest of your life, while providing a lump sum to Fischhoff at your death.

Forté donors commit to a total of \$50,000 over a period not more than ten years with a minimum annual contribution of \$2,500 per year. Call the Fischhoff office for complete details.



## FISCHOFF SOCIETY

The Fischhoff Society is an organized community of donors, friends, alumni and volunteers committed to ensuring the strength of the Fischhoff Competition, the advancement of its educational outreach programs and the camaraderie generated by beautiful chamber music.

If you would like to join the Fischhoff Society and receive our *High Notes* newsletter, you can make your gift by contacting the Fischhoff office at 574-631-0984.

## ANNUAL GIVING OPPORTUNITIES

Guarantor:	\$5,000 and up
Sustaining Fellow:	\$2,000 to \$4,999
Encore Club:	\$1,000 to \$1,999
Ovation Club:	\$500 to \$999
Signature Club:	\$250 to \$499
Salon Club:	\$100 to \$249
Friend of the Fischhoff:	up to \$99

## ALUMNI

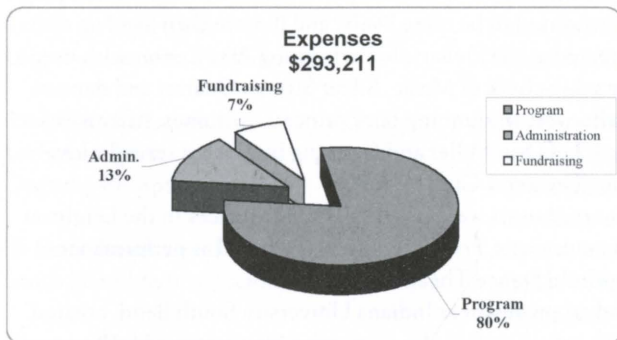
Since its founding in 1973, the Fischhoff has become the largest chamber music competition in the United States. As a result, hundreds of outstanding musicians claim the Fischhoff as a defining musical experience in their lives. To these alumni, we wish to offer the opportunity to stay connected with the Fischhoff organization and to benefit from ongoing relationships with lifetime friends and chamber musicians, venue hosts, presenters and educators. If you are a former participant in the Fischhoff competition, we invite you to update your profile on the Fischhoff website so we may stay connected with you. Visit us online at [www.fischhoff.org](http://www.fischhoff.org).

## VOLUNTEERS

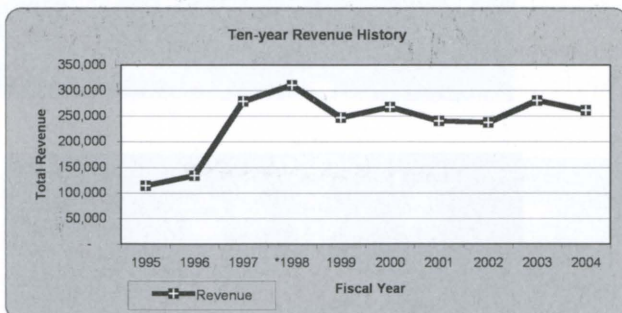
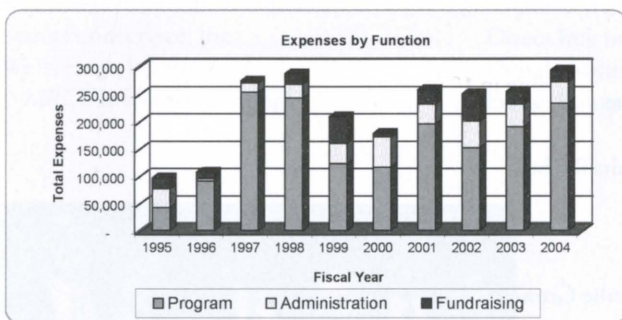
Each year, the Fischhoff counts on dozens of volunteers who help make the Competition and the outreach programs possible. We welcome your volunteer assistance. You don't have to be a musician, and you don't have to be a chamber music expert. But if you appreciate the beautiful music of the Fischhoff and wish to encourage young musicians, we have an assignment that will fit your schedule and capabilities. The Fischhoff is a great way to get involved in the community and to make a difference in the lives of young people. To volunteer, simply call the Fischhoff office at 574-631-0984.

# FINANCIAL RETROSPECTIVE

FISCAL YEAR 2004  
(July 04–June 05)



These figures are based on the annual IRS form 990 for the fiscal year 2004 (July 04-June 05). A copy of this form is available to the public by visiting the website [www.guidestar.com](http://www.guidestar.com). You can also access organization information through the Fischhoff website at [www.fischhoff.org](http://www.fischhoff.org).



\*Endowment established in 1998

Fischhoff's Board of Directors wishes to express thanks to all our donors. We are indebted to your generosity and encourage your ongoing support to ensure the greatness of Fischhoff.

Your gifts encourage us to uphold our mission and move forward with our long-range plans for the competition and our educational programs.

*Thank you all!*

## A LEAGUE OF EXTRAORDINARY GENTLEMEN

There are always people at work behind the scenes of a nonprofit who make it run efficiently for purely philanthropic reasons. Four such people include: James Hillman, Douglas Mick, Dennis Bamber and Richard Bailey. Through their contributions of time and resources, they have exhibited their commitment to the mission and spirit of Fischhoff within our community, the region and the nation. It is with extreme gratitude that we acknowledge and thank them for being a league of extraordinary gentlemen.



Photo by Mike Hartman

# FISCHOFF'S WINTER GALA



Artwork by Ron Monsma

## *Assez vif*

"Assez vif" means a little more lively, and is used in musical score to inspire musicians to play with spirit. Fischhoff's gala evening promised to be quite lively, and it more than lived up to the expression. Our guests were greeted at the DeBartolo Performing Arts Center with music performed by children from the Suzuki School of Music, Silver Strings Quartet and dancers from the Conservatory of Dance who were in stunning fairy princess costumes. After a warm reception, Notre Dame's Executive Chef Don Miller and Catering by Design served a lovely dinner & dessert in the Regis Philbin Theater & Grand Lobby.

Continuing a celebration of the arts, guests were treated to performances in the Leighton Concert Hall by Fischhoff's Resident musicians, Fry Street Quartet, as well as performances by Conservatory of Dance and Southold Dance Theatre.

Ron Monsma, regional artist and art professor at Indiana University South Bend, created and gifted a brilliant painting, entitled *Assez vif*, to the evening's silent auction. Hackman Frames of Ohio, renowned for their craftsmanship, donated the complimentary gilded frame. Together with other well-appointed items donated by local merchants and businesses, guests enjoyed bidding throughout the evening.

Fischhoff wishes to thank Mr. and Mrs. James McAdams for purchasing the *Assez vif* painting. The artwork will be featured on the 2007 Fischhoff National Chamber Music Competition poster, which is distributed to more than 12,000 teachers of music at colleges, universities and community music schools across the United States.

## Event Planning

### Committee:

Tamara Bailey  
Tessa Bysong  
Christine Cook  
Ann Divine  
Shirley Geraghty  
Janet Horvath  
Hannah Kim  
Christopher & Valerie Kramer  
Pam O'Rourke  
Emese Ronay Rivera  
Miki Strabley & Chris Temple

## Fischhoff's Mentoring Project Ensemble:

*Silver Strings Quartet* – Abby Vogt,  
Paul Kellner, Neil Schroeder, & Julia Beebe  
Coached by Dolores Wilson

## Suzuki School of Music

Joyce Davis, Music Director & Emilie Grondin

## Dancers :

Conservatory of Dance,  
Jill Tulchinsky, Artistic & Executive Director  
Southold Dance Company,  
Andrea Feay, Executive Director;  
Artistic Director Alexei Kremnev  
& Anna Reznik.

## Junior Hosts / Hostesses:

Marian High School  
Junior Citizens Club  
& Conservatory of Dance





**Underwriters**

**Saint Germain Level**  
 Burkhart Advertising  
 Leighton Concert Hall Sponsor

**Rive Gauche Level**  
 1st Source Bank  
 Opening Reception Sponsor

**Ile Saint-Louis Level**  
 South Bend Medical Foundation

**Champs-Elysees Level**  
 Baker & Daniels  
 Crowe Chizek  
 Elizabeth & Tom Borger  
 Gibson Insurance Group  
 Graffis Furniture  
 Madison Center  
 Doug & Karen Mick  
 South Bend Medical Foundation  
 Stanz Foodservice, Inc.  
 Wells Fargo Investments,  
 MRCB Investment Group

**Le Marais Level**  
*Patron Sponsors*  
 Louise Addicott and Yatish Joshi  
 Christine & Glen Cook  
 Patricia & Jim Dayton  
 Frederick Ettl  
 Joe & Beth Dittmar  
 Kitty Rose & Ed Everett  
 Alfred & Melanie Guillaume  
 Michael & Karen Harmon  
 Ray Plagens

**In-kind Contributions**  
 Ann and Paul Divine  
 Anthony Travel  
 Blackthorn Golf Club  
 Brennan Dental Group  
 The Carriage House  
 Marie P. DeBartolo Performing Arts Center,  
 University of Notre Dame  
 Direct Rug Imports  
 Donald Miller, ND Executive Chef  
 Emese Ronay Rivera

Framed Custom Picture Framing  
 Graffis Furniture  
 Hackman Frames, Inc.  
 Christopher & Valerie Kramer  
 Martin's Super Markets  
 MB Designs  
 MichaelAngelos/The Event Company  
 Mossberg & Company Inc.  
 National Wine & Spirits  
 Potawatomi Zoo  
 Ron Monsma  
 Salon 301  
 Shirley Geraghty  
 Sorin's at the Morris Inn  
 South Bend Chocolate Company  
 South Bend Racquet Club  
 Stanz Foodservice, Inc.  
 Swan Lake Resort  
 University of Notre Dame  
 The Woodwind & Brasswind  
 Yellow Rose Florist



*Assez dif guests*



# FISCHOFF'S RESIDENCY PROGRAM

Fischhoff's Residency program is the only one of its kind and scope in Northern Indiana that is dedicated to providing unique and interactive programs targeting underserved children and at-risk youth. The residency also focuses on early arts intervention for children ages 4-9.

In 2005-06, Fischhoff presented 36 programs for more than 6,100 children and youth during three separate weeks of outreach programming. Imani Winds of New York, Triton Brass of Boston and the Fry Street Quartet of Logan, Utah, captivated audiences in South Bend, Elkhart and outlying communities.

Introduced in 1995, the Fischhoff Residency has enjoyed the enthusiastic support of countless community organizations, agencies, foundations and schools and has brought imaginative programming to more than 30,000 children, youth and adults.

Residency programs take many forms including Peanut Butter & Jelly Jam family workshops, S.A.M. I Am Early Reader's Program, masterclass/workshops and the Chamber Music in Unusual Places Series.

The Fischhoff Competition offers the regional community access to phenomenally talented chamber ensembles. Many go on to establish successful careers in the field. We are so pleased to bring them back as seasoned educators who believe in mentoring children and sharing a deep passion for chamber music.

Next year's Fischhoff Residency ensembles will include Triton Brass, Jupiter Quartet and the 2006 Fischhoff Competition Grand Prize Winner.

## December 2005 participating organizations and schools included:

Early Childhood Development Center at St. Mary's College, South Bend  
 Early Childhood Development Center at Notre Dame, South Bend  
 Conservatory of Dance, South Bend  
 St. Joseph County Public Library, South Bend  
 Edison Middle School, South Bend  
 Centre Township Library, South Bend  
 Northside Middle School, Elkhart  
 New Horizons Retirement Band, Elkhart  
 Westside Middle School, Elkhart  
 Perley Primary Center, South Bend  
 Monroe Primary Center, South Bend

S.A.M. I Am Early Readers Program



Triton Brass

## November 2005 participating organizations and schools included:

The South Bend Community School Corporation's Title One Program for Second Graders at Coquillard, Harrison, Lincoln, Madison, Marquette, McKinley, Monroe, Muessel, Nuner, Perley, Studebaker, Tarkington, Warren & Wilson.

Oxbow Elementary, Elkhart  
 St. Vincent Elementary, Elkhart  
 South Side Elementary, Elkhart  
 University Village, University of Notre Dame  
 Notre Dame Symphony Orchestra  
 Clay High School, South Bend  
 St. Joseph County Public Library, South Bend  
 Robinson Community Learning Center, South Bend  
 Edison Intermediate Center, South Bend  
 DeBartolo Center for the Performing Arts, University of Notre Dame



S.A.M. I Am Early Readers Program

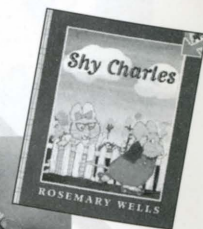


Imani Winds

## January 2006 participating organizations and schools included:

Nuner Primary Center, South Bend  
 Suzuki School of Music, Granger  
 Clay High School, South Bend  
 McKinley Primary Center, South Bend  
 Public Library preschool program, Elkhart  
 Central High School, Elkhart  
 Prairie Vista Elementary, Granger  
 Swanson Primary Center, South Bend  
 Jefferson Middle School, South Bend  
 St. Joseph County Library, South Bend  
 Conservatory of Dance, South Bend  
 Southold Dance, South Bend

S.A.M. I Am Early Readers Program



Fry Street Quartet





## ARTS-IN-EDUCATION RESIDENCY UNDERWRITERS

### Foundations and Institutions

- Allen Whitehill Clowes Charitable Foundation
  - in direct support of operations
- Henkels Lecture Series, Institute for Scholarship in the Liberal Arts, College of Arts and Letters, University of Notre Dame
  - direct support for the Imani Winds
- Genesis Program & the City of Elkhart
  - direct support for Elkhart school and community programs
- Indiana Achievement Award for Sustainability of small non-profit organization — Sycamore Foundation
- South Bend Junior League
  - direct support of books for Sam-I-Am programs
- South Bend Community School Corporation, Title I Program
  - direct support for Imani Winds
- Frederick S. Upton Foundation
  - direct support for Michigan school and community programs

This project is supported in part by an award from the National Endowment for the Arts.

This presentation is supported by the Heartland Arts Fund a program of Arts Midwest funded by the National Endowment for the Arts with additional contributions from General Mills Foundation, Land O'Lakes Foundation, Sprint Corporation, and the Indiana Arts Commission.

Provided with support from Community Foundation of St. Joseph County, Inc., the Indiana Arts Commission, a state agency, and the National Endowment for the Arts, a federal agency.



### Corporate and Private Support

- 1st Source Bank
- AM General
- Baker & Daniels
- Dennis & Ginny Bamber
- Elizabeth Borger of the Elkhart Group of Wachovia Securities
- Burkhart Advertising
- Barbara Shields Byrum
- Crowe Chizek
- Patricia Dayton
- Char & Burt Ford
- Gibson Insurance Group
- Graffis Furniture
- Charles & Anne Hillman
- Madison Center
- Marie P. DeBartolo
- Performing Arts Center, University of Notre Dame
- Doug & Karen Mick
- Mossberg & Company
- NIPSCO
- South Bend Medical Foundation
- St. Joseph County Public Library
- Stanz Foodservice, Inc.
- Wells Fargo Investments, MRCB Investment Group
- The Woodwind & Brasswind

### In-Kind Contributors

- Ann and Paul Divine
- Anthony Travel
- Blackthorn Golf Club
- The Carriage House
- Catering by Design
- DeBartolo Performing Arts Center, University of Notre Dame
- Direct Rug Import
- Divine-Johnson Group at Wachovia Securities
- Framed Custom Picture Framing
- Shiley Geraghty
- Graffis Furniture
- Hackman Frames, Inc.
- Christopher & Valerie Kramer
- MB Designs
- Martin's Supermarkets
- Michael Angelos, The Event Company
- Donald Miller, ND Executive Chef
- Ron Monsma
- Mossberg & Company Inc.
- National Wine & Spirits
- Potawatomi Zoo
- Emese Ronay Rivera
- Salon 301
- Sorin's at The Morris Inn
- South Bend Chocolate Company
- South Bend Racquet Club
- Stanz Foodservice, Inc.
- Swan Lake Resort
- University of Notre Dame
- The Woodwind & Brasswind, Inc
- The Yellow Rose Florist



# ARTIST-OF-THE-MONTH WINNERS

The Artist-of-the-Month Program honors outstanding high school instrumentalists in both St. Joseph and Elkhart Counties and surrounding regions through featured articles in *The South Bend Tribune*, *The Elkhart Truth*, and *The Goshen News*.

Special thanks go to our committees who select the monthly winners.

The Fischhoff Association wishes to thank the **Elnora Hartman Stickley Scholarship Fund** for providing \$100 scholarships to each Artist-of-the-Month winner during the 2005-06 season.

### St. Joseph County Committee Members

Nancy Menk  
 Carol Kapson  
 Judy Simcox

### Elkhart County Committee Members

Solomia Soroka  
 Matthew Hill  
 Karen Mick  
 Michael Wade

Congratulations to the following winners:

### St. Joseph County and Region

Month	Name	Instrument	School
OCTOBER	Stephen Kusmer	<i>clarinet, saxophone</i>	Clay High School
NOVEMBER	Lesley Chan	<i>violin, piano</i>	Washington High School
DECEMBER	Devin Hillsdon-Smith	<i>tenor trombone</i>	Penn High School
JANUARY	John Cecil	<i>cello, piano</i>	Trinity School at Greenlawn
FEBRUARY	Rachel Kusmer	<i>violin</i>	Clay High School
MARCH	Lillie Ashton Lodge	<i>piano</i>	John Adams High School
APRIL	Erin Brady	<i>oboe</i>	Culver Academies
MAY	Rebecca Essig	<i>oboe</i>	Penn High School
JUNE	Deborah Wei	<i>piano, violin</i>	Penn High School

### Elkhart County and Region

OCTOBER	Rachel Yoder	<i>violin</i>	Goshen High School
NOVEMBER	Melody Mierau	<i>violin</i>	Goshen High School
JANUARY	Luke Yoder	<i>percussion</i>	Elkhart Memorial High School
FEBRUARY	Christopher Wheeler	<i>piano</i>	Homeschool

# CHAMBER MUSIC MENTORING PROJECT

Fischoff's Mentoring Project provides an opportunity for motivated regional high school chamber ensembles to receive consistent professional coaching at no charge. Fischoff is delighted to be underwriting coaching fees for five ensembles during the 2005-06 school year. In addition to coaching sessions, ensembles are invited to participate in masterclasses and a public recital. Ensembles are also encouraged to perform at public venues such as retirement communities, libraries, community centers and elementary schools.

Fischoff wishes to thank the Elnora Hartman Stickley Scholarship Fund for graciously underwriting the Mentoring Project

## Ensembles & Coaches



### CHANSON TRIO

*Homeschooled, Elkhart & Middlebury, IN*  
 Christopher Wheeler, piano  
 Katavah Kring, cello  
 Aaron Denlinger, violin  
 Coach: Juliana Lockman



### FREE VIBRATION TRIO

*Trinity at Greenlawn, Adams High School, South Bend, IN*  
 Michelle Grondin, flute  
 Augusta Hasse, cello  
 Amanda Herman, flute  
 Coach: Carol Russell  
 Private instructor: Anne Marie Dawson



### RILEY QUARTET

*Riley High School, South Bend, IN*  
 Andrew Ward, cello  
 Abby Besemer, viola  
 Samantha Grant, violin  
 Christian Duff, violin  
 Coach: Bruce Lambright  
 Orchestra Director: Linda Howard




Masterclass with Fry Street Quartet



### SILVER STRINGS QUARTET

*Homeschooled, Plymouth, Penn High School, Mishawaka, Trinity School at Greenlawn, South Bend, IN*  
 Abigail Vogt, violin  
 Paul Kellner, cello  
 Neil Schroeder, viola  
 Julia Beebe, violin  
 Coach: Dolores Wilson  
 Suzuki Instructor: Emile Grondin



## PEER AMBASSADORS FOR CHAMBER MUSIC

The Peer Ambassadors for Chamber Music (PACM) Program takes place on Friday of the Competition. It involves our youngest performers—ensembles from the Junior Division. This year, our carefully chosen junior ensembles will be sent into area classrooms to present informal performance-workshops for second and third graders. The Program's purpose is to present to little learners a friendly and "real" introduction to chamber music. Since Fischhoff juniors are also in school, they make perfect role models for elementary school children who look up to and identify with older students. The performance level of Fischhoff junior ensembles creates an excitement that is a powerful mentoring tool in persuading young children to consider joining their own school or community band and orchestra programs.

We wish to acknowledge and thank the following junior ensembles:

opus., Worthington, OH  
Alethea String Quartet, Madison, WI  
Animato Trio, Boston, MA  
Attacca Quartet, Boston, MA  
Luna Trio, San Francisco, CA  
Ruvido String Quartet, Highwood, IL  
Gagliano Trio, Natick, MA  
Biarritz Trio, Boston, MA  
Amethyst Trio, Natick, MA  
Festivus Quartet, Boston, MA  
Lontano String Quartet, Oklahoma City, OK

Schools receiving PACM programs:

Darden Primary School, South Bend, IN  
Hawthorne Elementary, Elkhart, IN  
Monroe Primary School, South Bend, IN  
Kennedy Primary School, South Bend, IN  
Wilson Primary School, South Bend, IN  
Studebaker Primary School, South Bend, IN  
Warren Primary School, South Bend, IN  
Eastside Elementary School, Niles, MI  
St Mary's Elementary School, Niles, MI  
Moccasin Elementary School, Buchanan, MI



# SOIREES

Soirees are intimate musical gatherings in the form of an evening party or reception in private homes. More than 30 years have passed since Joseph Fischhoff and his musician friends began inviting neighbors to their homes to enjoy chamber music. Since then, soirees have become a popular springtime tradition in Michiana. Guests are able to experience chamber music as it was intended to be heard—in relatively small spaces for small audiences. That tradition has expanded to include soirees in corporate settings, schools, and retail settings—anywhere people gather for social purposes.

The tremendous generosity of our soiree hosts, hostesses and businesses enables the Fischhoff National Chamber Music Association to present some of the talented ensembles that gather in South Bend for the Competition. Soirees are important to Fischhoff not only because they provide a wonderful opportunity for the audience, but also because they help raise funds to support the Fischhoff Competition.

We would like to acknowledge the tremendous contribution of the ensembles who perform at the soirees and to extend our thanks to those ensembles who offered their services, but for whom we had no soiree host.

## 2006 Soiree Hosts and Hostesses

Dr. Timothy and Marianne Peters, Plymouth, IN  
Dr. David and Mitzi Sabato, South Bend, IN  
Trinity School at Greenlawn, South Bend, IN  
The Stanley Clark School, South Bend, IN  
Glen and Christine Cook, South Bend, IN  
Claudia Manning, South Bend, IN  
Dogwood Fine Arts Festival, Inc., Dowagiac, MI  
Ruth Murdock Elementary School, Berrien Springs, MI

## This year's participating ensembles include:

Arundo Winds, University of Colorado, Boulder, CO  
Shema Trio, Eastman/Cincinnati Conservatory of Music, Cincinnati, OH  
Frangipani Winds, Indiana University, Bloomington, IN  
CINCO, Chicago, IL  
Black Pearl Trio, University of North Texas, Denton, TX  
Azmari Quartet, Northern Kentucky University, Cincinnati, OH  
Kailas String Quartet, Rice University Shepherd School, Houston, TX

## Community Outreach Public Performances

Friday, May 5, 2006

## Lunchtime Concerts and Barnes & Noble Bookstore Players:

The Black Pearl Trio, University of North Texas, Denton, TX  
Lontano String Quartet, Oklahoma City, OK  
Konisch Saxophone Quartet, Northern Arizona University, Flagstaff, AZ  
Manhattan Piano Trio, The Juilliard School, New York, NY  
Lago, Carnegie Mellon University, Pittsburgh, PA



# WINNER'S TOUR

## THE 2005-2006 GRAND PRIZE WINNER'S TOUR

Each fall, the Grand Prize-winning ensemble from the Competition is presented on the Joseph E. Fischhoff Memorial Winner's Tour, playing in formal venues as well as community and educational settings. This past year, Lloyd Carr-Harris String Quartet performed for the following:

### October 16-22 & November 13-18, 2005

Andrews University, masterclass and Howard Series concert, Berrien Springs, MI  
Argos High School, outreach and performance, Argos, IN  
Encore Performing Arts, soiree, Plymouth, IN  
Fontana Chamber Arts, soiree and outreach events, Kalamazoo, MI  
Jackson Middle School, demonstration and masterclass, South Bend, IN  
LaSalle Intermediate School, masterclass, South Bend, IN  
Music in the Loft, concert, Chicago, IL  
Norton Building Concert Series, concert, Lockport, IL  
Pease Concert Series, outreach and concert, Eastern Michigan University, Ypsilanti, MI  
Penn High School, demonstration and coaching, Mishawaka, IN  
Riley High School, masterclass and performance, South Bend, IN  
Veritas Academy, outreach and performance, South Bend, IN  
St. Paul Retirement Community, outreach performance, South Bend, IN  
Suzuki Music School, demonstration and coaching, Granger, IN  
Wabash College, concert, Crawfordsville, IN

### Italy

Summer 2006: Emilia Romagna Festival

### Emilia Romagna Festival

Fischhoff and the Emilia Romagna Festival have formed a collaboration that makes it possible for the Competition's Grand Prize Winner to participate in the 2006 summer music festival. Concerts are presented throughout the Emilia Romagna region of Italy in unique venues such as historic buildings, great homes, churches and even courtyards. The tour provides wonderful opportunities, experiences and connections for these talented young chamber musicians.



Lloyd Carr-Harris String Quartet  
2005 Fischhoff Grand Prize Winners

## THE 2006-2007 GRAND PRIZE WINNER'S TOUR

Fall, 2006

### Illinois

October 15: Norton Building Concert Series, concert, Lockport  
October 20: Music in the Loft, concert, Chicago

### Indiana

October 16-18: regional concerts and educational programs  
October 17: Encore Performing Arts, soiree, Plymouth  
October 19: Concert, Mishawaka

### Michigan

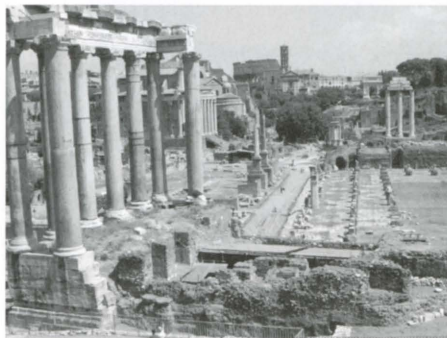
October 16: Howard Series, Andrews University, concert, Berrien Springs  
October 21: Fontana Performing Arts, concert, Kalamazoo

### Italy

Summer 2007: Emilia Romagna Festival



Emilia Romagna Festival  
Itinerari musicali 2007



# THE 33<sup>RD</sup> ANNUAL COMPETITION

## HOW THE JURY SELECTS THE WINNER

How does a juror make his or her selection of the "best" ensemble from all the competitors? It can be a Herculean task. The distinguished jurors of the 2006 Competition do have some formulas on which they can rely. However, their decisions are guided primarily by their own musical integrity and experience as performers and instructors. They listen for interpretation—tempo and dynamics; ensemble performance—balance within the ensemble, blend, and unity of the members; technical accuracy—rhythm and intonation; and overall performance—poise, artistic impression, and expression.

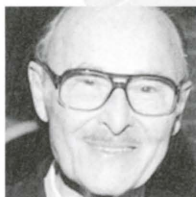
Jurors individually rank the ensembles in each division. These rankings are combined, then averaged for each ensemble to arrive at a group's composite ranking. Rankings are a good method for determining the prize winners, but the real value for these young musicians comes from the written comments of the jurors. The juror evaluations are distributed to all performing ensembles at the completion of the Competition. From these written comments, the musicians gain valuable and constructive feedback, which is intended to stimulate their growth as artists and ensembles.

Identifying conflict of interest issues is very important to the integrity of the competition. Conflicts of interest between jurors and ensembles or any individuals within an ensemble are carefully identified and handled appropriately.

## HISTORY OF THE COMPETITION

South Bend is proud to be the home of one of the nation's premiere musical events, the renowned Fischhoff National Chamber Music Competition. Founded in 1973, by Joseph E. Fischhoff and members of the South Bend Chamber Music Society, this prestigious event was originally intended to encourage emerging instrumental chamber musicians and provide a national forum for their talents. In that first year, six ensembles participated.

Today, the original mission remains constant and has broadened to include Senior String and Wind Divisions as well as a Junior Division for musicians age 18 and under. This year, fifty-five ensembles have been invited to perform. The scope of Fischhoff has also grown by utilizing the talents of these amazing young musicians through community outreach programs and by designing Arts-in-Education Residencies that bring Fischhoff alumni as well as other chamber music ensembles back to the community for outreach programs.



JOSEPH E. FISCHOFF  
1907-1992

Joe Fischhoff loved music, especially chamber music. Born in Hungary in 1907, his family settled in South Bend where he graduated from South Bend High School in 1925. As a young man, he simultaneously attended Philadelphia's Wharton School of Business and the Curtis Institute of Music. In 1929, he graduated from Wharton with a degree in Economics while studying viola with Louis Bailley and chamber music at Curtis. When the first orchestra was started at Curtis, Joe was invited to audition by conductor Leopold Stokowski and played in the viola section.

While he did not professionally pursue music, he played chamber music in his home every week for as long as he could continue to play. In the furniture business by trade, Joe was a musician at heart and loved to encourage young people to continue the art of chamber music through the Fischhoff Competition.

As the competition grew, so did the temptation to become like all other competitions. He quietly insisted that this competition be different. Its roots were to be founded in education and mentoring. His goal became ours - to provide a positive and constructive experience for all musicians. Because of him, Fischhoff not only seeks out excellence, but has as its major goal the education of as many people as possible to be chamber musicians, to listen to chamber music, and most of all, to love chamber music.



2005 Grand Prize Winner, Lloyd Carr-Harris Quartet and prize underwriters Dennis and Virginia Bamber.

## 2006 COMPETITION STATISTICS

- Countries represented: 23
- States represented: 15
- Oldest member: 35
- Youngest: 12
- Junior Entries — Groups: 49; Individuals: 183
- Senior String Entries — Groups: 27; Individuals: 95
- Senior Wind Entries — Groups: 35; Individuals: 150

# JUNIOR QUARTERFINAL JURORS

The Quarterfinal Round was introduced in 1996 to allow for increased applications to the Junior Division of the Fischhoff Competition. This Round provides an additional day of competition and master classes. The Quarterfinal Round offers a valuable educational component for our youngest participants. From this group, twelve ensembles will be selected to compete in the Junior Semifinal on Saturday. Master classes, conducted by the panel of Quarterfinal jurors, will be offered Saturday morning. Fischhoff is honored and pleased to welcome the following 2006 Quarterfinal jurors.

## 2006 Junior Quarterfinal Benefactor

This program has been made possible through the generosity of Amateur Chamber Music Players of its ACMP Foundation, an organization that promotes chamber music activities for amateur musicians.



GRAMMY-nominated cellist **Terry King** was a protégé of Gregor Piatigorsky and was assistant to him in the renowned masterclasses at the University of Southern California. Many prominent American composers have written works for King, and he has premiered, commissioned and/or recorded cello compositions by such celebrated masters as Roy Harris, Virgil Thomson, Henry Cowell, Aaron Copland, Otto Luening, Paul Creston, Halsey Stevens, Lou Harrison, Lukas Foss, Lalo Schiffrin, Miklos Rosza and many others.

King is engaged in recording projects of classic and American works for cello on the Music and Arts label, was a member of the Mirecourt Trio and has been recognized as a leader in contemporary piano trio repertoire. His recording of the complete Mendelssohn works was praised in *Fanfare Magazine* and was the preferred recording mentioned on the nationally syndicated radio program, "First Hearing." His ground-breaking series, "Cello America," has been met with similar praise worldwide. Mr. King has also recorded for MCA, ABC Classic, CRI, Innova, Genesis, Orion, Grand Prix, Audax, A&M, Bay Cities, Gasparo and TR Records. Terry King currently teaches at the Longy and Hartt Schools of Music, is Co-Director of *LyricalBoston*, a chamber music series in Boston, and *LyricalFest*, a summer chamber music institute.



**Kathryn Lucktenberg** is Associate Professor of Violin at the University of Oregon. She was concertmaster of the Honolulu Symphony for 11 seasons prior to 1993. A fourth-generation violinist, Lucktenberg entered the Curtis Institute of Music in Philadelphia at age 15. She completed high school there and earned her Bachelor of Music from Curtis in 1980, studying with Jascha Brodsky, Jaime Laredo and Ivan Galamian. Lucktenberg's professional debut was with the Philadelphia Orchestra, performing the Barber Violin Concerto. She was a national winner in the competition arena and a semifinalist in the Indianapolis and Flesch International Competitions. She has performed with the Honolulu, Savannah and Augusta Symphonies, and as a member of the Kasimir String Quartet, touring England, France and Italy. She has performed widely in the western United States and Asia with concerts in Taiwan, Thailand, Korea, New Zealand and Hawaii. She has given recitals at Washington D.C.'s Kennedy Center, the Musician's Club of New York, and has performed on the popular *Bargemusic* series in Brooklyn.

Kathryn Lucktenberg is a regular participant in the Grand Teton Music Festival and the Oregon Bach Festival. Lucktenberg has taught masterclasses internationally, in the Pacific Northwest and in the southeastern United States. She has also served on the faculty of the Grand Teton Orchestral Training Seminar. While in Hawaii, she co-founded and co-directed the Honolulu Academy of Arts' "Academy Camerata" series. During a recent tour of Asia, she served as a visiting professor for the University of Otago in New Zealand. In addition to solo engagements, Lucktenberg concertizes extensively in the Pacific Northwest with the Oregon String Quartet and as a member of Trio Pacifica. She has recorded for CRI and Koch labels.



## First Round Screening Committee Members

### Junior Division Screening Committee:

Michael Adams  
Merilee Klemm  
Nicola Melville  
Daria Tedesca

### Senior String Division Screening Committee:

Katie Badridze  
Anthony Devroye  
Sumire Kudo

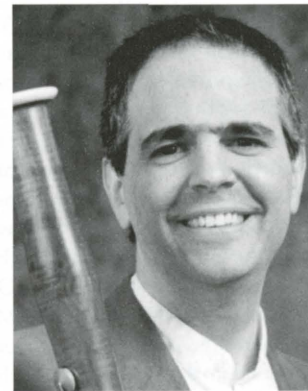
### Senior Wind Division Screening Committee:

Christopher French  
Scott Quackenbush  
Andrea Mather Stow



Currently Coordinator of Keyboard Studies at San Jose State University School of Music and Dance, **Gwendolyn Mok**, pianist, began her career at the Juilliard School of Music. She attended Yale University for her undergraduate work and State University of New York at Stony Brook for her Doctorate. Ms. Mok has appeared in many of the world's leading concert halls including The Barbican, Carnegie Hall, The Kennedy Center, Avery Fisher Hall, Alice Tully Hall and The Hong Kong Performing Arts Center. She is frequently invited to play and record with major international orchestras, most notably The London Symphony, The Philharmonia, The Hong Kong Philharmonic Orchestra, The Beijing Philharmonic Orchestra and The Residentie Orkestre of the Hague.

In 1994, the French Ministry of Culture awarded Ms. Mok a grant to study with noted Ravel specialist, Vlado Perlemuter, for one year. Since 1995, Mok has been performing Ravel's works in recital and was invited to teach these works at the Royal College of Music, Welsh College of Music, The Dartington International Summer School in Devon and The San Francisco Conservatory of Music. In 1996, Ms. Mok made her official London debut in two concerts of Ravel in Somerset House, on a restored Erard grand piano of 1875. She was also featured in broadcasts of Ravel on BBC Radio 3, Music Matters, Woman's Hour and the World Service. She was also the director of INFORMANCE!, a music program which benefited 400 children in East London's public schools. Ms Mok records for Nonesuch/ Elektra, Musical Heritage Society, Cala Records and EMI. She can also be heard on several movie soundtrack recordings of music by Maurice Jarre.

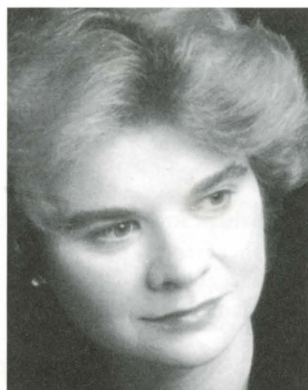


Bassoonist **George Sakakeeny** is professor of bassoon at the Oberlin Conservatory of Music and holds the title of "Guest Professor of the Central Conservatory of Music" of Beijing, China. He is principal bassoonist of the Promusica Chamber Orchestra of Columbus and City Music, Cleveland. He has also performed extensively with the Boston Symphony and Boston Pops Orchestras.

In August 2000, Professor Sakakeeny served as the only American judge on the jury for the final round of the Gillette/Fox international bassoon competition held in Buenos Aires. He has taught masterclasses at International Double Reed Society conferences. In addition, he has given numerous solo recitals and taught masterclasses at leading institutions, such as the Paris Conservatory, the Tchaikovsky National Music Academy in Kiev, Rice University and Tokyo University of the Fine Arts. In addition, he has performed long-term teaching residencies at the Beijing Central Conservatory of Music, Seoul National University and the Conservatoire National Supérieur Musique et Danse of Lyon, France.

A veteran chamber music performer, he has appeared on four continents with various ensembles including the Oberlin Reed Trio, Boston Musica Viva and the Boston Wind Octet. As a chamber music artist, he is featured on the International Double Reed Society's 25th anniversary CD in a performance of the Villa-Lobos Duo for oboe and bassoon with oboist Alex Klein. Professor Sakakeeny is a great fan of traditional Chinese Music and Beijing Opera and in his spare time studies the Chinese language formally and is learning to play the erhu. He enjoys travel and exploring foreign cities, learning foreign languages, riding motorcycles and hiking.

## SEMIFINAL JURORS



Awarded the 1989 Andrew Wolf Chamber Music Prize and the 1987 Avery Fisher Career Grant, Philadelphia-born pianist **Lydia Artymiw** has appeared with over one hundred orchestras worldwide. American orchestral appearances include the Boston Symphony, the New York and Los Angeles Philharmonics, the Cleveland and Philadelphia Orchestras, the Cincinnati, Detroit, Minnesota, National, Pittsburgh, San Francisco, and Seattle Symphonies and the St. Paul Chamber Orchestra.

Solo recital tours have taken her to all major American cities and to important European music centers such as London, Paris, Berlin, Milan, Rome and throughout the Far East. Critics have acclaimed her seven recordings for Chandos as well as the Centaur, Pantheon and Artega labels. Festival appearances include Aspen, Bard, Caramoor, Chautauqua, Hampden-Sydney, Hollywood Bowl, Marlboro, Maverick, Montreal, Mostly Mozart, Seattle, Tucson and Virginia Waterfront. Artymiw has collaborated with such artists as Yo-Yo Ma, Richard Stoltzman, Kim Kashkashian, Arnold Steinhardt, Benita Valente, the Guarneri, American, Miami, Orion, Shanghai, Tokyo and Borromeo Quartets and has toured nationally with Music From Marlboro groups. Along with Arnold Steinhardt and Jules Eskin, she is a member of the Steinhardt-Artymiw-Eskin Trio. A recipient of top prizes in the 1978 Leeds and 1976 Leventritt International Competitions, she graduated from Philadelphia's University of the Arts and studied with Gary Graffman for twelve years. Artymiw is Distinguished McKnight Professor of Piano at the University of Minnesota in Minneapolis and also received the "Dean's Medal" for Outstanding Professor in 2000.



American hornist **David Jolley** has been acclaimed as one of his generation's most notable soloists. His performances have taken him across North and South America, Europe, East Asia and Japan. A chamber artist of unusual sensitivity and range, Mr. Jolley has frequently collaborated with such groups as the Kalichstein-Laredo-Robinson Trio, the Guarneri Quartet, the American String Quartet, the Beaux Arts Trio, Musicians from Marlboro and the Chamber Music Society of Lincoln Center. Mr. Jolley is a member of the virtuoso woodwind quintet, Windscape, whose first CD for Arabesque was released in 1999. He is also a member of a newly formed trio with violinist Michael Tree and pianist Leon Fleischer and serves as a hornist with the Orpheus Chamber Orchestra. Mr. Jolley's keen interest in enlarging the solo horn literature has led to the composition for him of many new works, including Ellen Taaffe Zwilich's Concerto for Horn and String Orchestra, which Mr. Jolley premiered at the Bravo!Colorado Festival and which was subsequently premiered in New York with the Orpheus Chamber Orchestra at Carnegie Hall. In addition, Jolley and the Orion String Quartet premiered George Perl's Duo for Horn and String Quartet at Alice Tully Hall in New York.

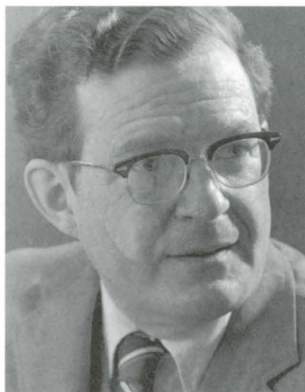
He has performed in many summer music festivals, including the Marlboro Festival, Aspen, Sarasota, Bravo!Colorado and Music from Angel Fire. Mr. Jolley is on the faculties of the Mannes College of Music, Queens College CUNY and the North Carolina School for the Arts.



Violist **Maria Lambros** has performed as a chamber musician throughout the world as a member of three of the country's finest string quartets in venues such as the Concertgebouw in Amsterdam, London's Wigmore Hall, the Konzerthaus in Vienna, New York's Lincoln Center and Weill Recital Hall at Carnegie Hall and the Library of Congress in Washington, D.C. She was most recently a member of the Mendelssohn String Quartet, the quartet-in-residence at New York's Town Hall and Harvard University and was a member of the renowned Ridge String Quartet, which was nominated for the 1993 GRAMMY Award for *Best Chamber Music Performance* for their recording of the Dvorák Piano Quintets with pianist Rudolf Firkusny. The recording won Europe's prestigious Diapason d'Or in the same year. She was also a founding member of the Naumburg Award-winning Meliora String Quartet, quartet-in-residence at the Spoleto Festivals of the U.S., Italy and Australia, which recorded Mendelssohn's Octet with the Cleveland Quartet.

Ms. Lambros has performed and taught at major chamber music festivals including Yellow Barn, Tanglewood, Santa Fe, La Jolla, Caramoor, Aspen, Norfolk, Chamber Music Northwest and New York's Mostly Mozart Festival and has performed with the Chamber Music Society of Lincoln Center, the Peabody Trio, and the Guarneri, Cleveland, Juilliard, Muir, Brentano, Borromeo, Colorado and Orion Quartets, among others. She is a founding member of the chamber ensemble, La Fenice, and is currently on the faculty of the Peabody Conservatory of Music.

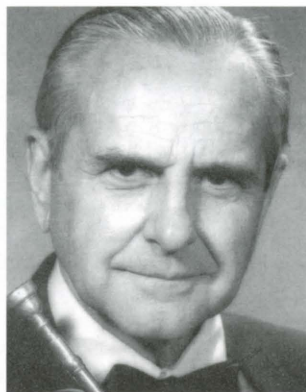
We wish to recognize **Louise Addicott** and **Yatish Joshi** for their underwriting support of the piano juror chair.



**Abram Loft** studied violin and viola in New York and earned his Ph.D. in musicology at Columbia University. He taught music history there for eight years (lecturing also at the Manhattan School of Music), performed on network radio and gave New York recitals both as violinist and violist. In 1954, he left Columbia, moving to Chicago to join The Fine Arts Quartet. For 25 years, he concertized throughout America, Canada, Europe and the Far East in a repertoire of more than 200 works. During that time, the quartet made 60 recordings of chamber music. There were also numerous radio and television performances, including twenty discussion/performance programs for National Educational Television scripted by Loft.

From 1963, the ensemble members were resident professors at the University of Wisconsin—Milwaukee. In 1979, Loft transferred to the Eastman School of Music of the University of Rochester to serve as head of the string department and professor of chamber music. He won the University's undergraduate teaching award in 1984 and retired in 1986. He has written three books: *Violin and Keyboard: the Duo Repertoire, Ensemble!*—*A Rehearsal Guide to Thirty Great Works of Chamber Music*, and *How to Succeed in an Ensemble: Reflections on a Life in Chamber Music*.

He is a contributor to the American Grove's Dictionary, has served on the editorial boards of the Journal of the American Musicological Society and the College Music Society's *Symposium*, and continues to serve as judge and chamber music coach, both here and abroad (in recent years, at Kneisel Hall). Loft holds the title of Distinguished Professor Emeritus both from UW-M and from the Eastman School, as well as ASTA's Distinguished Service Award.



**Robert Nagel** holds a Diploma in Trumpet and B.S. and M.S. degrees in composition from the Juilliard School of Music. For twenty years, Mr. Nagel was a freelance first trumpet in concerts, radio, television, recordings and film recording in New York City and a member of the American Composers Alliance. He was the founder of the New York Brass Quintet, which he directed for thirty-one years, and of the Nagel Duo, a chamber ensemble of soprano, trumpet and keyboard. In 1975, he co-founded the International Trumpet Guild. Mr. Nagel is Professor Emeritus at the Yale School of Music where he was a faculty member for thirty-one years. He also has former teaching affiliations with the Juilliard and Manhattan Schools of Music, University of Hartford, New England Conservatory and North Carolina School of the Arts.

Mr. Nagel has conducted masterclasses and taught trumpet in Beijing and Shanghai, China, and has been a brass coach of the Asian Youth Orchestra in Japan and Singapore. He has also performed with many symphonies including Bach Aria Society, Casals Music Festival and the Symphony of the Air, (formerly the NBC Symphony) under the direction of conductor Arturo Toscanini. Currently an adjunct faculty member of the University of South Carolina School of Music, Mr. Nagel is President of Mentor Music, a publishing house for brass and choral music founded in 1959. In 1999, Mr. Nagel received the Cesare Bendinelli Award in Verona, Italy.



Bassoonist, composer, and author **Arthur Weisberg** was bassoonist with the New York Woodwind Quintet for 14 years and has taught at the Juilliard School, the State University of New York at Stony Brook and Yale University. He recorded George Crumb's *A Haunted Landscape* with the New York Philharmonic. He has conducted the Milwaukee Symphony, the Iceland Symphony, the Sjaellands and Aalborg Symphonies of Denmark, and the Basel and Berlin Radio Orchestras. Weisberg created the Contemporary Chamber Ensemble in 1961. This group was in existence for 25 years, touring the world and producing several prize-winning recordings. He is the author of two books, "The Art of Wind Playing" and "Performing 20th Century Music-A Handbook for Conductors and Instrumentalists." He has composed numerous works and has made several editions for bassoon, including a transcription of the Bach Cello Suites and a set of 15 Etudes for Bassoon in the style of 20th Century music. Mr. Weisberg has developed a new key system for the bassoon that does away with its most glaring acoustical faults. This bassoon is now in production and is gradually gaining adherents. Mr. Weisberg is on the faculty of Indiana University School of Music, Bloomington.

# MEDAL AND SCHOLARSHIP SPONSORS

## Prizes

THE FISCHOFF GRAND PRIZE  
\$7,500

The Joseph E. Fischhoff Memorial Winner's Tour is awarded to the grand prize winner.

THE FLORENCE V. CARROLL  
JUNIOR PRIZE DIVISION  
First Place Scholarship  
\$2,000

Second Place Scholarship  
\$1,500

Third Place Scholarship  
\$1,000

KENNETH GEOFFROY MEMORIAL AWARD  
\$500

Highest-ranking Junior Ensemble from the Michiana Region  
Underwritten by Patricia Geoffroy

SENIOR DIVISION WINDS  
Gold Medal  
\$3,000

Silver Medal  
\$2,000

Bronze Medal  
\$1,000

SENIOR DIVISION STRINGS  
Gold Medal  
\$3,000

Silver Medal  
\$2,000

Bronze Medal  
\$1,000

## The Grand Prize Medal

Sponsored by Dennis and Virginia Bamber

Dennis Bamber, born in South Bend, has been involved in music all of his life. He started playing the piano at age six and saxophone at the age of 10. He attended Indiana University where he received his Bachelor's and Master's degrees in music performance. He was also the recipient of a Bronze Medal at the International Saxophone Competition in Geneva, Switzerland. After some successful years as a performer, teacher, and clinician, Mr. Bamber started The Woodwind & Brasswind in 1978. It has since grown into one of the largest sellers of musical instruments in the world with an international reputation. The Bambers have always realized the value of education in the arts, as is evidenced by the endowed Woodwind & Brasswind Scholarship for incoming students at Indiana University, Bloomington. The Bambers are dedicated to supporting and helping the arts flourish, particularly in their hometown and are most proud to be the sponsors of the Fischhoff Grand Prize.

## Senior Division Winds

Gold Medal - Senior Wind Division  
Sponsored by Douglas and Karen Mick

Both Douglas and Karen Mick are lifelong residents of Elkhart. They have three married children and five grandchildren. Karen is a former Fischhoff Board member and presently serves on the Fischhoff Artist-of-the-Month Screening Committee. Douglas has been active in educational and charitable organizations for over 20 years and is currently the President of Fischhoff's Board of Directors. He is Vice President of Wells Fargo Investments. Music has been an important part of the Mick's lives, and they are very proud to be an active part of the Fischhoff National Chamber Music Association.

Silver Medal - Senior Wind Division  
Sponsored by Lynne Stettbacher

Music has been, and is, a fundamental part of my life. My father imparted his love of music to me over sixty years ago by playing recordings of opera singers. His father sang and played hymns on a pedal organ at home. Classical music played on our radio. My close friends in medical school were music lovers also but were more accomplished on piano and organ than I. Playing is pleasant, but I prefer listening. Music is one of my greatest joys, for it has elevated my spirit and soothed my soul. The goal of underwriting the silver medal is to extend this circle of friendship to students, so that they can go on to play classical music for us now and many years from now.

## Senior Division Strings

Gold Medal - Senior String Division  
Sponsored by Richard and Tamara Bailey

Rick and Tammy wish to salute all of this year's Fischhoff musicians and their families in recognition of the exceptional commitment of energy, will, talent and time to participate in this exciting event. "The Gold Medal is a symbol of significant achievement. We hope it serves as a reminder of not only this great 2006 Fischhoff Competition, but also the value of working together with friends toward a worthy goal," say the Baileys. With their support, the Bailey family salutes all those who make the Fischhoff possible: the Fischhoff executive staff, the Fischhoff Board of Directors and the scores of volunteers who bring this beautiful music to the South Bend community.

Silver Medal - Senior String Division  
Sponsored by Carolyn Friedemann Garber

The Senior String Division Second Prize is underwritten by Carolyn Garber in honor of her late parents Herbert (1900-1995) and Alma Reinholtz Friedemann (1909-1997). Carolyn believes that her father and mother would be very proud that this prize honors their love of music by encouraging young chamber musicians throughout the world. It is Carolyn's hope that the group who receives this annual prize will continue their music studies and inspire many others to enjoy chamber music.

The Barbara Shields Byrum  
Senior String Bronze Prize  
Endowed by the Barbara Shields Byrum Fund for the Fischhoff National Chamber Music Association of the Community Foundation of St. Joseph County

The Senior String Division Third Prize is sponsored by Bill and Katie Shields and Barbara Shields Byrum. Michiana advocates for many years, Bill and Katie Shields have undertaken major leadership roles in numerous community initiatives, including the establishment of the Purdue School of Technology on the Indiana University South Bend campus. They also have been instrumental in establishing health-related scholarships through the Community Foundation of St. Joseph County and the local hospitals. They funded the first Endowed Chair for a Dean at Indiana University South Bend, the Dean of Nursing and Health Professions. The Shields Family is honored to support the artistic achievements of future young chamber ensembles through Fischhoff's first endowed prize.

## The Florence V. Carroll Junior Prize Division

### First Place Scholarship

Sponsored by Taylor Lewis-Garber and William Garber  
— *Forté* Members

William Garber's mother, Elizabeth "Betty" Rose Garber, was an educator for over thirty years mainly in the Southwest Michigan area public school system. Following retirement and the death of her late husband, V. Edward "Ed" Garber, Mrs. Garber today continues her commitment to helping both foreign and domestic students find the financial resources to fund their education. A competent classical pianist, Mrs. Garber loves great music. This year, we honor her for her unflagging commitment to the development of young talent in whatever field they wish to pursue.

### Second Place Scholarship

Sponsored by Paul and Ann Divine

Paul and Ann Divine are honored to provide this prize scholarship to the winners of the Junior Division Silver Medal in recognition of the discipline and dedication each has shown to chamber music. Through their achievement, these musicians also pay tribute to their parents, teachers and coaches who have helped them reach the highest level of performance. Congratulations to the winners and to all those who have had a part in this great project.

### Third Place Scholarship

Sponsored by Marijke, Price, Kirsten,  
and Marc Niles

Marijke, Price, Kirsten, and Marc Niles are sponsoring the Third Place Junior Division Prize to honor all past Fischhoff participants, in particular the Juniors, for their enthusiasm and love for music. "We want to pay tribute to the Fischhoff's musicians, who have given us such extraordinary inspiration in the many years we attended this very special competition," says the Niles family. "We continue to follow with great pride the successes and great achievements of the Fischhoff 'family.' We encourage this year's third-prize winner to always remember the pride you feel today and treasure your memories of the Fischhoff Competition. We moved to Vermont, but Fischhoff moved with us in our hearts...and the music plays on."



#### In Memoriam: Edna Huizinga, 1914-2006

Edna Huizinga passed away this winter, at age 92. Until the end, she retained her sweet spirit and quick wit. She was a giving person who deeply valued the importance of the arts and passing along that passion to young people. She was part of a founding

group of Fischhoff friends who were asked to help underwrite competition prizes. Enthusiastic from the start, she sponsored the Senior Wind Division Bronze Medal for six competitions, starting in 2000. We are so grateful for Edna's help and her youthful spirit. We will miss her.

*Congratulations, to the Fischhoff,  
on your 33rd World Class Competition.  
We're proud to be your partner.*

**Burkhart**

[www.burkhartadv.com](http://www.burkhartadv.com)





Roger Mastrolanni

*Peter Salaff,  
Director of String  
Chamber Music*

*Cavani String  
Quartet,  
Ensemble-in-  
Residence*

*Everyone works together at CIM, inspiring each other and sharing ideas. As teachers, we promote the exchange of ideas, the benefits of teamwork and of cultivating listening skills – all as vital tools for performing. The level of students and their enthusiasm, interest and desire to play make CIM a wonderful place to study and teach.*

# cim

CLEVELAND  
INSTITUTE  
OF MUSIC

David Cerone, President

BY ANY MEASURE,  
EXCEPTIONAL

The Cleveland Institute of Music is a leading international conservatory that is distinguished by an exceptional degree of collaboration between students and teachers.

String chamber music at CIM is directed by Peter Salaff and includes coaching by the Cavani Quartet. In addition, the distinguished CIM faculty, many of whom are members of The Cleveland Orchestra, coach string, woodwind, brass and percussion ensembles.

Bachelor of Music	Doctor of Musical Arts	Artist Diploma
Master of Music	Artist Certificate	Professional Studies

For further information, contact William Fay, Director of Admission  
Cleveland Institute of Music, 11021 East Blvd., Cleveland, Ohio 44106  
(216) 795-3107 **Visit our web site at [cim.edu](http://cim.edu)**



# Na Zdrowie!

Join the Symphony in celebrating  
Polish music, food and dance!

Featuring famed Czestochowa pianist Maciej Zagórski performing  
Chopin's Piano Concert No. 1

Colorful Polish musicians, dancers and cuisine

Come celebrate South Bend's rich Polish heritage.

Saturday, May 13th, 8pm

Tickets start at \$18 adults, \$5 students and children

235-9190 or [SouthBendSymphony.com](http://SouthBendSymphony.com)



San Francisco Conservatory of Music

music

## Make Music. Make History.

A world-class city, an extraordinary faculty,  
and a dazzling new state-of-the-art conservatory  
that puts you in the cultural heart of San Francisco.

### CHAMBER MUSIC FACULTY

#### Violin

Robert Mann, *Visiting Professor*

Mark Sokol, *Chair*

Axel Strauss

Ian Swensen

#### Violoncello

Jean-Michel Fonteneau

Mark Kosower

#### Piano

Paul Hersh

#### Viola

Jodi Levitz

Paul Hersh

*America's first degree program in chamber music.*

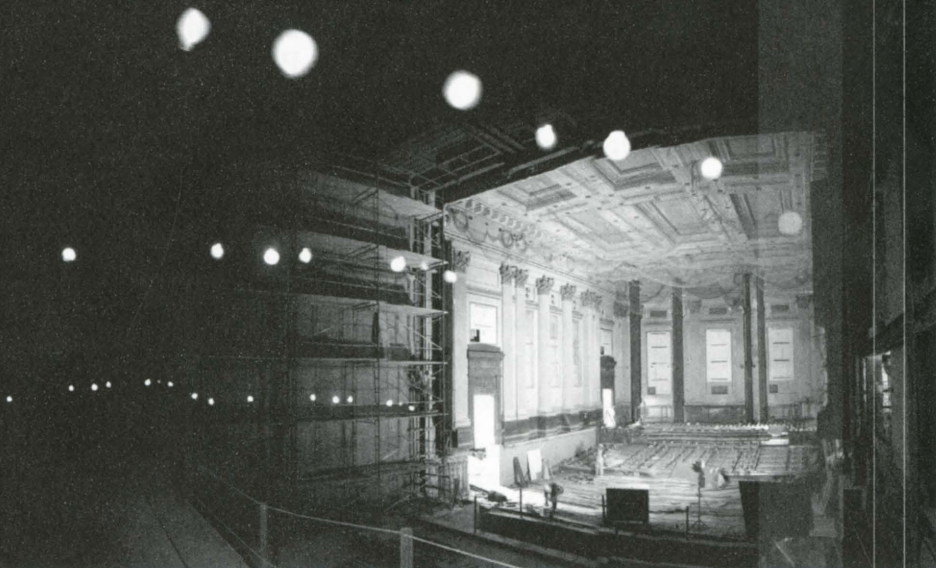
The New San Francisco Conservatory of Music at Civic Center  
Inaugural Year 2006-2007

#### OFFICE OF ADMISSION

800.899.SFCM

admit@sfc.edu

www.sfc.edu





# JUNIOR QUARTERFINAL REPERTOIRE

Friday, May 5, Leighton Concert Hall, DeBartolo Performing Arts Center

Each ensemble has submitted a program at least fifteen minutes in length. The Jury will have chosen selected movements or segments totaling not more than fifteen minutes.

Repertoire selections will not be announced. Please hold applause until the conclusion of the audition.

## 9:20 a.m. - J1 Trio Pathos

*Midwest Young Artists, Highwood, Illinois*

Ryan Murphy, 13, Violin  
Stanley Moore, 15, Cello  
Christina Kwok, 17, Piano

Piano Trio No. 2 in E Minor, Op. 67  
I. Andante Shostakovich

Piano Trio in D Major, Op. 70, No. 1  
I. Allegro vivace e con brio Beethoven

Piano Trio No. 2 in C Major, Op. 87  
II. Andante con moto Brahms

## 9:40 a.m. - J2 Bella String Quartet

*Chamber Music Connection, Inc., Worthington, Ohio*

Julia Reeves, 18, Violin  
Lisa Taxier, 14, Violin  
Stephanie Price, 15, Viola  
Hannah Fuson, 16, Cello

String Quartet in F Major, Op. 74, No. 2  
I. Allegro spiritoso Haydn

String Quartet No. 8, Op. 110  
I. Largo  
II. Allegro molto  
III. Allegretto Shostakovich

## 10:00 a.m. - J3 Attacca Quartet

*New England Conservatory Preparatory Division, Boston, Massachusetts*

Rita Wang, 16, Violin  
Ji Min Lee, 17, Violin  
Christopher Chang, 17, Viola  
Kristen Wojcik, 18, Cello

String Quartet No. 8, Op. 110  
II. Allegro molto  
III. Allegretto Shostakovich

String Quartet in F Major  
I. Allegro moderato (Très doux) Ravel

## 10:20 a.m. - J4 BAM Quartet

*Midwest Young Artists, Highwood, Illinois*

Herah Kim, 14, Violin  
Rachel Goldberg, 14, Viola  
Gabriel Cabezas, 13, Cello  
Sean Yeh, 14, Piano

Piano Quartet in E-flat Major, Op. 47  
II. Scherzo: Molto vivace  
III. Andante cantabile Schumann

Piano Quartet in G Minor, Op. 25  
IV. Rondo alla Zingarese Brahms

## 10:40 a.m. - J5 Amethyst Trio

*Walnut Hill School, Natick, Massachusetts*

Rhiannon Banerdt, 17, Violin  
Patrick McGuire, 15, Cello  
Katherine Petersen, 17, Piano

Piano Trio in B Major, Op. 8  
I. Allegro con brio Brahms

Piano Trio (1952)  
III. Allegro vivace Babadjanian

**-Break-**

## 11:10 a.m. - J6 Beat 3

*Midwest Young Artists, Highwood, Illinois*

Victoria Aschheim, 17, Percussion  
David Hutter, 18, Percussion  
Molly Yeh, 16, Percussion

Trio per Uno  
I.  
III. Zivkovic

Sonata Op. 9 No. 1  
I. Beethoven/arr. Barnes.

## 11:30 a.m. - J7 YAM String Quartet

*Midwest Young Artists, Highwood, Illinois*

Moire Bette, 17, Violin  
Scot Moore, 16, Violin  
Madeline Sharp, 17, Viola  
Mindy Park, 16, Cello

String Quartet in G Minor, Op. 27  
I. Un poco andante Grieg

String Quartet No. 2, Op. 17  
II. Allegro molto capriccioso Bartok

## 11:50 a.m. - J8 Trio Chalumeau

*Chicago Youth Symphony Orchestras, Chicago, Illinois*

Richard Li, 16, Clarinet  
Cora Swenson, 17, Cello  
Ellie Green, 17, Piano

Trio for Piano, Clarinet and Cello in B-flat Major,  
Op. 11  
I. Allegro con Brio Beethoven

Fantasy Trio for Clarinet, Cello and Piano, Op. 26  
I. Allegro energico  
II. Andante con Espressione Muczinski

# JUNIOR QUARTERFINAL REPERTOIRE

Friday, May 5, Leighton Concert Hall, DeBartolo Performing Arts Center

Each ensemble has submitted a program at least fifteen minutes in length. The Jury will have chosen selected movements or segments totaling not more than fifteen minutes.

Repertoire selections will not be announced. Please hold applause until the conclusion of the audition.

## 12:10 p.m. - J9 Alethea String Quartet

Midwest Young Artists/Buddy Conservatory of Music,  
Ft. Sheridan, IL/Madison, WI  
Shawn Moore, 18, Violin  
Krista Stewart, 16, Violin  
Vicki Powell, 17, Viola  
James Kang, 17, Cello

String Quartet in C major, Op. 33, No. 3 Haydn  
IV. Rondo: Presto

String Quartet No. 1 in C minor, Op. 51, No. 1 Brahms  
I. Allegro

String Quartet No. 4 Bartok  
V. Allegro molto

## 12:30 p.m. - J10 Trio con Fuoco

Chicago, Illinois  
Matthew Lipman, 14, Viola  
Ben Fried, 14, Cello  
Brian Chang, 15, Piano

Trio Sonate in G minor, Op. 2, No. 8 Handel  
I. Andante  
II. Allegro (energico)

Trio for Piano, Clarinet or Violin, and Cello  
in B-flat Major, Op. 11 Beethoven  
II. Adagio

Trio in A minor for Clarinet, Cello and Piano, Op. 114 Brahms  
IV. Allegro

Memento Amare Huydts  
With Firm Mind

**-Break-**

## 1:50 p.m. - J11 Temporal Trio

Midwest Young Artists, Highwood, Illinois  
Hiral Desai, 17, Percussion  
Becca Laurito, 18, Percussion  
Nick Kabat, 16, Percussion

Lift-Off Russell Peck

Sonata No. 5 in G minor de Arcangelo Corelli  
(transcription by Alain Londeix)

I. Adagio  
II. Vivace  
III. Adagio  
IV. Vivace

## 2:10 p.m. - J12 Matrka String Quintet

Chamber Music Connection, Inc., Worthington, Ohio  
John Thayer, 18, Violin  
Alexis Matrka, 17, Violin  
Annalisa Boerner, 18, Viola  
Allison Barr, 18, Viola  
Angelica Liu, 18, Cello

String Quintet in B-flat Major, Op. 87, No. 2 Mendelssohn  
III. Adagio e lento

String Quintet in G Major, Op. 111 No. 2 Brahms  
I. Allegro non troppo ma con brio

## 2:30 p.m. - J13 Gagliano Trio

Walnut Hill School, Natick, Massachusetts  
Julia Glenn, 17, Violin  
Hannah Johnson, 16, Cello  
Bethany Pietroniro, 18, Piano

Piano Trio Rebecca Clarke  
I. Moderato ma appassionata  
III. Allegro vigoroso

Piano Trio in F minor, Op. 65 Dvorak  
I. Allegro ma non troppo

## 2:50 p.m. - J14 Festivus Quartet

New England Conservatory Preparatory Division, Boston, Massachusetts  
Yuga Cohler, 16, Oboe  
Mann-Wen Lo, 16, Violin  
Christine Hung, 17, Viola  
Tavi Ungerleider, 16, Cello

Quartet in F Major, K. 370 (368b) Mozart  
I. Allegro

Phantasy, Op. 2 Britten

# JUNIOR QUARTERFINAL REPERTOIRE

Friday, May 5, Leighton Concert Hall, DeBartolo Performing Arts Center

Each ensemble has submitted a program at least fifteen minutes in length. The Jury will have chosen selected movements or segments totaling not more than fifteen minutes.

Repertoire selections will not be announced.  
Please hold applause until the conclusion of the audition.

## 3:10 p.m. - J15 The Luna Trio

*San Francisco Conservatory of Music, San Francisco, California*

Doori Na, 14, Violin  
Tessa Seymour, 12, Cello  
Mayumi Tsuchida, 14, Piano

Piano Trio in E Minor, Op. 90, "Dumky" Dvorak  
I. Lento maestoso - Allegro vivace, quasi doppio  
movimento - Tempo I - Allegro molto  
II. Poco adagio - Vivace non troppo

Piano Trio in C Minor, Op. 1, No. 3 Beethoven  
I. Allegro con brio  
IV. Finale: Prestissimo

**-Break-**

## 3:40 p.m. - J16 opus.

*Chamber Music Connection, Inc., Worthington, Ohio*

Jeffrey Myers, 16, Violin  
James Rubino, 17, Violin  
Reuben Payne, 16, Viola  
Matthew Kufchak, 16, Cello

String Quartet in C Major, Op. 76, No. 3, "Emperor" Haydn  
I. Allegro

String Quartet No. 1 in C minor, Op. 51, No. 1 Brahms  
IV. Allegro

String Quartet Ravel  
I. Allegro Moderato - Très doux

## 4:00 p.m. - J17 Ruvido String Quartet

*Midwest Young Artists, Highwood, Illinois*

Mae Bariff, 15, Violin  
Katie Belleville, 17, Violin  
Elisabeth Graham, 16, Viola  
Kevin Kunkel, 17, Cello

String Quartet No. 1, Op. 20 Ginastera  
I. Allegro violento ed agitato

String Quartet in F Major, Op. 59, No. 1 Beethoven  
I. Allegro ma non tanto

## 4:20 p.m. - J18 Neptune Trio

*Walnut Hill School/New England Conservatory, Boston, Massachusetts*

Nigel Armstrong, 15, Violin  
Nan-Cheng Chen, 18, Cello  
Jung Eun Yoon, 18, Piano

Piano Trio in D Major, Op. 70, No. 1 "Ghost" Beethoven  
II. Largo assai ed espressivo

Piano Trio No. 2 in C Minor, Op. 66 Mendelssohn  
IV. Finale: Allegro appassionato

## 4:40 p.m. - J19 Red Aurora String Quartet

*Fairbanks, Alaska*

Sara Johansen, 17, Violin  
Sara Wilbur, 18, Violin  
Maureen Heflinger, 18, Violin  
Bryant Hopkins, 18, Cello

String Quartet in F Major Ravel  
II. Assez vif - Tres Rythme

String Quartet in F Major, Op. 96 "American" Dvorak  
I. Allegro ma non troppo

String Quartet No. 8, Op. 110 Shostakovich  
II. Allegro molto

## 5:00 p.m. - J20 Animato Trio

*New England Conservatory Preparatory Division, Boston, Massachusetts*

Hillary Ditmars, 15, Violin  
Sebastian Baverstam, 17, Cello  
Jung A Bang, 17, Piano

Piano Trio No. 1 in D Minor, Op. 49 Mendelssohn  
I. Molto Allegro agitato

Cafe Music Schoenfield  
I. Allegro con fuoco

**-Break-**

# JUNIOR QUARTERFINAL REPERTOIRE

Friday, May 5, Leighton Concert Hall, DeBartolo Performing Arts Center

Each ensemble has submitted a program at least fifteen minutes in length. The Jury will have chosen selected movements or segments totaling not more than fifteen minutes.

Repertoire selections will not be announced. Please hold applause until the conclusion of the audition.

## 5:30 p.m. - J21 The Bone Rangers

*Merit School of Music, Chicago, Illinois*  
Kevin Dombrowski, 15, Trombone  
Sean Tripp, 16, Trombone  
Jonathan Laxton, 17, Bass Trombone  
Matthew Wolford, 18, Bass Trombone

Trombone Quartet Walter Ross  
I. Intrada  
II. Chorale  
III. Scherzo

Suite for Four Trombones Serocki  
I. Intrada  
II. Canone  
III. Interludium  
IV. Corale  
V. Intermezzo  
VI. Arietta  
VII. Toccata

## 5:50 p.m. - J22 Cerberus

*Chicago Youth Symphony Orchestras, Chicago, Illinois*  
Ophelia Hu, 16, Piano  
Agnes Likos, 18, Violin  
Mira Luxion, 16, Cello

Piano Trio in D Major, Op. 70, No. 1 "Ghost" Beethoven  
I. Allegro vivace e con brio

Piano Trio in A Minor Ravel  
I. Modere

## 6:10 p.m. - J23 Lontano String Quartet

*Oklahoma City & Tulsa, Oklahoma*  
Kristin Zimmerman, 18, Violin  
Maura Gerety, 16, Violin  
Dash Nesbitt, 18, Viola  
Zack Reaves, 17, Cello

String Quartet in G Minor, Op. 74, No. 3 Haydn  
("The Horseman")  
I. Allegro  
II. Largo assai

String Quartet in F Major, Op. 96 ("American") Dvorak  
I. Allegro ma non troppo  
II. Lento  
IV. Finale

## 6:30 p.m. - J24 Biarritz Trio

*New England Conservatory Preparatory Division, Boston, Massachusetts*  
Nicole Leon, 16, Violin  
Daniel McCormick, 18, Cello  
Natalie Durham, 17, Piano

Piano Trio in A Minor Ravel  
I. Modéré

Piano Trio in E Minor, Op 90 "Dumky" Dvorak  
I. Lento maestoso - Allegro vivace, quasi doppio movimento - Lento maestoso - Allegro molto  
II. Poco adagio - Vivace non troppo

**CLAIRE GIVENS VIOLINS, INC.**  
*Established 1977*

Dealers, Makers & Restorers of Fine Violins, Violas, Cellos & Bows

1004 Marquette Avenue | Suite 205 | Minneapolis, MN 55403  
Toll-Free: 800.279.4323 | Phone: 612.375.0708  
E-mail: [cgivens@givensviolins.com](mailto:cgivens@givensviolins.com) | [www.givensviolins.com](http://www.givensviolins.com)

# Mannes

Artistry & Community

## DEAN

Joel Lester

## FACULTY

### Stringed Instruments

Nina Beilina, *Violin*  
Shirley Givens, *Violin*  
Lewis Kaplan, *Violin*  
Ida Kavafian, *Violin*  
Chin Kim, *Violin*  
Michelle Kim, *Violin*  
Daniel Phillips, *Violin*  
Todd Phillips, *Violin*  
Lucie Robert, *Violin*  
Aaron Rosand, *Violin*  
Ann Setzer, *Violin*  
Mark Steinberg, *Violin*  
Sally Thomas, *Violin*  
Hiroko Yajima, *Violin*  
Eugene Becker, *Viola*  
Hsin-Yun Huang, *Viola*  
Caroline Levine, *Viola*  
Paul Neubauer, *Viola*  
Daniel Panner, *Viola*  
Ira Weller, *Viola*  
Timothy Eddy, *Violoncello*  
Marcy Rosen, *Violoncello*  
Irene Sharp, *Violoncello*  
Fred Sherry, *Violoncello*  
Barbara Stein Mallow, *Violoncello*  
Paul Tobias, *Violoncello*  
Marji Danilow, *Double Bass*  
Jordan Frazier, *Double Bass*  
Homer Mensch, *Double Bass*  
Orin O'Brien, *Double Bass*

### Piano

Edward Aldwell  
Arkady Aronov  
Stephanie Brown  
Pavlina Dokovska  
Vladimir Feltsman  
Richard Goode  
Yuri Kim  
Jacob Lateiner  
Irina Morozova  
Jerome Rose  
Victor Rosenbaum  
Thomas Sauer  
J.Y. Song  
Nina Svetlanova  
Diane Walsh  
Inessa Zaretsky

### Voice

Richard Barrett  
Amy Burton  
Richard Cross  
Thomas Cultice  
Ruth Falcon  
Bonnie Hamilton  
Antonia Lavanne  
Arthur Levy  
Dan Marek  
Beth Roberts  
Marian Thompson  
Robert White

### Woodwinds and Brass

Sue Ann Kahn, *Flute*  
Judith Mendenhall, *Flute*  
Keith Underwood, *Flute*  
Richard Dallesio, *Oboe*  
Elaine Douvas, *Oboe*  
Thomas Stacy, *Oboe and English Horn*  
Sherry Sylar, *Oboe*  
David Krakauer, *Clarinet*  
Charles Neidich, *Clarinet*  
Mark Nuccio, *Clarinet*  
Marc Goldberg, *Bassoon*  
Leonard Hindell, *Bassoon*  
Frank Morelli, *Bassoon*  
Patricia Rogers, *Bassoon*  
Allen Won, *Saxophone*  
Ranier Delintinis, *Horn*  
David Jolley, *Horn*  
Eric Ralske, *Horn*  
Vincent Penzarella, *Trumpet*  
Thomas Smith, *Trumpet*  
Per Brevig, *Trombone*  
David Finlayson, *Trombone*  
David Taylor, *Bass Trombone*  
Alan Baer, *Tuba*

### Timpani and Percussion

Barry Centanni  
James Preiss  
Glen Velez  
Michael Werner

### Harp

Susan Jolles

### Conducting

David Hayes, *Director of Orchestral and Conducting Studies*  
Mark Shapiro, *Choral*

### Composition

Robert Cuckson  
Leo Edwards  
Keith Fitch  
David Loeb  
David Teimpidis

### Classical Guitar

Frederic Hand  
Michael Newman

### Harpsichord

Arthur Haas

### Historical Performance Ensembles

The Mannes Baroque Chamber Players,  
Nancy Wilson, *Director*

### Voice Classes

Thomas Bagwell, *Opera Scenes*  
Marianne Barrett, *Diction, Language*  
Daniel Biaggi, *Diction, Language*  
Richard Cross, *Lieder*  
Neal Goren, *Vocal Arts*  
Antonia Lavanne, *Lieder*  
Rhoda Levine, *Acting*  
Glenn Morton, *Diction, Song Interpretation*  
Renée Santer, *Diction*  
Christina Stanescu, *Lieder*

### Opera

Joseph Colaneri, *Director*  
Laura Alley  
Susan Caldwell  
Nico Castel  
Jay Lesenger  
Ted Taylor  
Susan Woodruff Versage

### Opera Master Artists-in-Residence

Regina Resnik  
Renata Scottò

### Percussion Ensemble

James Preiss, *Director*

### Contemporary Ensemble

Madeleine Shapiro,  
*Director*

### Orchestra

David Hayes, *Director of Orchestral and Conducting Studies*

### Techniques of Music

Elizabeth Aaron  
Kyle Adams  
Edward Aldwell  
Wayne Alpern  
Poundie Burstein  
Terry Champlin  
Robert Cuckson  
Leo Edwards  
George Fisher  
David Gagne  
Lisa Johnson  
Joel Lester  
David Loeb  
Mei-Mei Meng  
William Needelman  
Frank Nemhauser  
Christopher Park  
Barbara Podgurski  
Richard Porterfield  
Carl Schachter  
Hedi Siegel  
Nicholas Stoia  
Christopher Stone

### Pedagogy

Robert Cuckson  
Lisa Johnson  
Frank Nemhauser  
Carl Schachter  
Richard Shirk

### ENSEMBLES - IN-RESIDENCE

#### The Orion String Quartet

Daniel Phillips, *Violin*  
Todd Phillips, *Violin*  
Steven Tenenbom, *Viola*  
Timothy Eddy, *Violoncello*

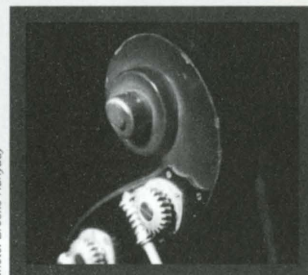
#### Mannes Trio

Hiroko Yajima, *Violin*  
Wilhemina Smith, *Violoncello*  
Thomas Sauer, *Piano*

#### The Newman-Oltman Guitar Duo

Michael Newman  
Laura Oltman

photo: Brooke Hurjady



### Major Studies

All orchestral instruments, piano, harpsichord, vocal accompaniment, voice and opera, guitar, composition, theory, conducting.

### Programs of Study

Bachelor of Music  
Bachelor of Science  
Undergraduate Diploma  
Master of Music  
Professional Studies Diploma

### For additional information write or call

Office of Admissions  
Mannes College  
The New School for Music  
150 West 85th Street  
New York, N.Y. 10024  
800-292-3040 or  
212-580-0210  
mannesadmissions@newschool.edu  
www.mannes.newschool.edu

### Small Classes

### Personal Attention

### Scholarships Available

# SONGS OF INNOCENCE AND OF EXPERIENCE

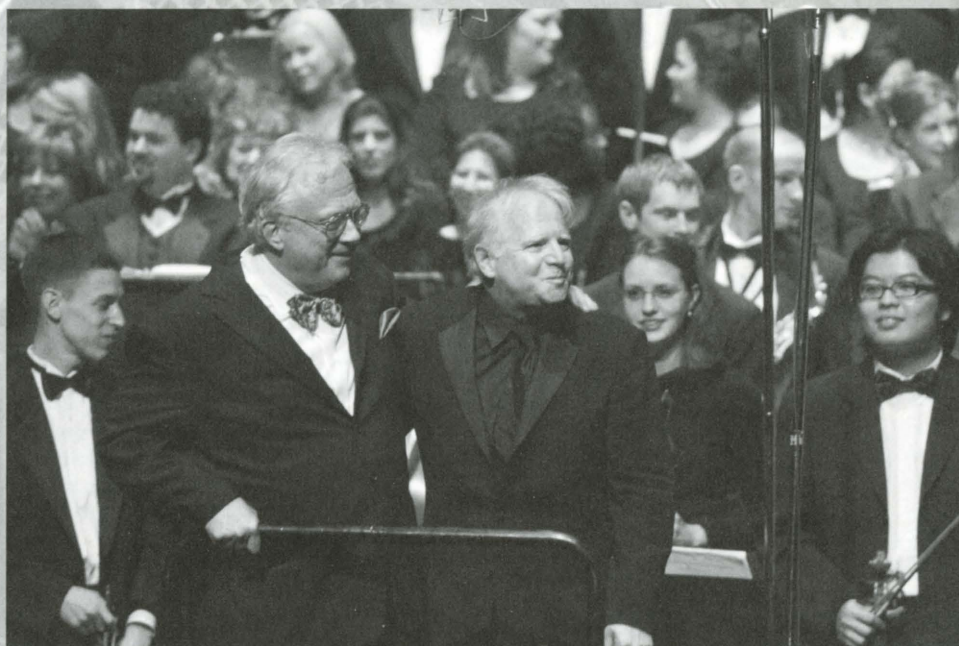
**Winner of Four Grammy Awards:**

**Best Classical Album**

**Best Choral Performance**

**Best Classical Composition**

**Classical Producer of the Year**



**Composer William Bolcom and Guest Conductor Leonard Slatkin**

The University of Michigan School of Music is proud to announce that “Songs of Innocence and of Experience”—written by composition faculty member William Bolcom, performed and recorded in April 2004 by the School of Music University Symphony Orchestra and Choirs—was the recipient of four Grammys for 2006. The performance is now available on Naxos Records.

**UNIVERSITY OF MICHIGAN**  
The possibilities are endless.

For further information, contact the Office of Admissions,  
734-764-0593, or visit our Web site at [www.music.umich.edu](http://www.music.umich.edu).



New name. Familiar sounds.

*Gemeinhardt®*

TREVOR



JAMES & Co.

*Roy Seaman*

SANKYO FLUTES    Stephanhöuser

*ARTISAN®*  
STRINGS

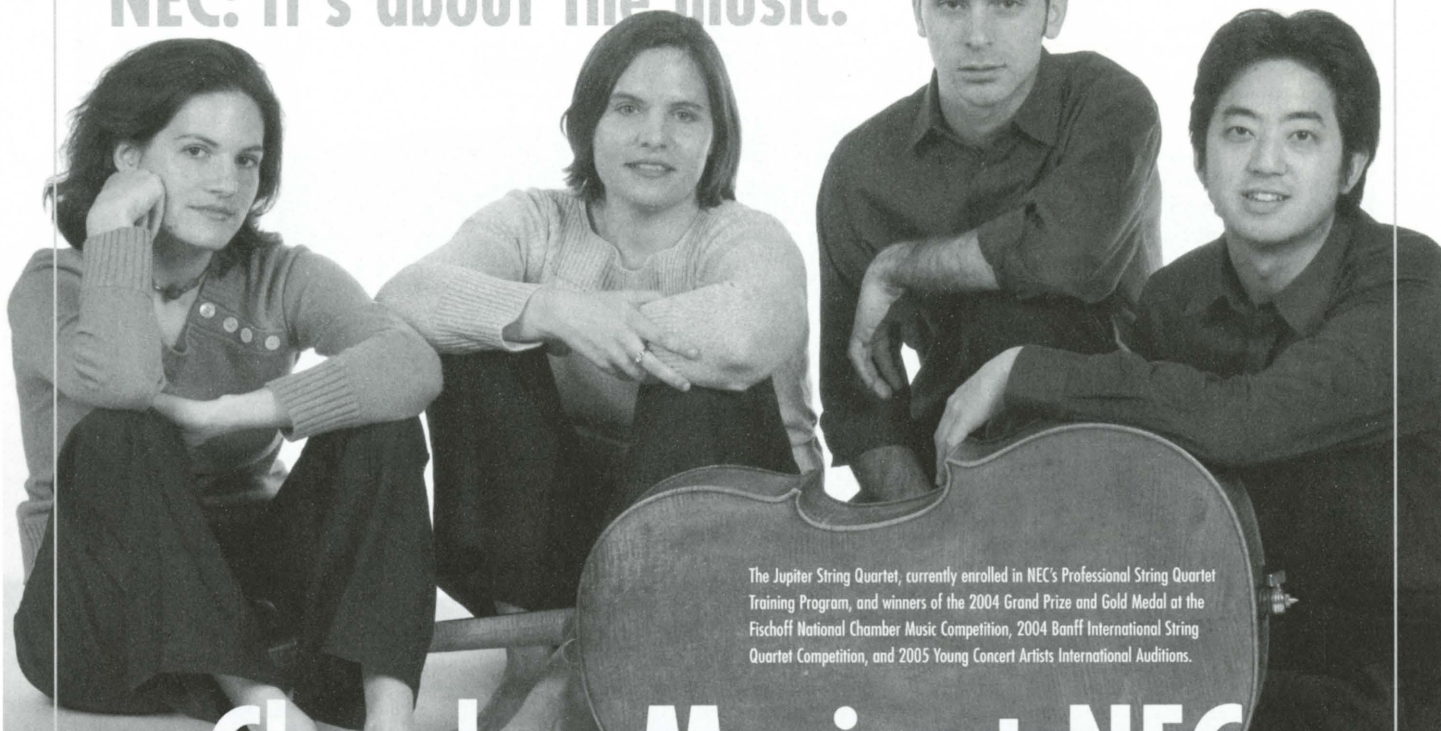
You might not know our name, but you know our family –  
Gemeinhardt, Trevor James, Sankyo, Roy Seaman, Artisan, and Stephanhöuser.  
Unique instrument lines with something in common – the Gemstone name.



GEMSTONE  
MUSICAL  
INSTRUMENTS

P.O. Box 788, Elkhart, IN 46515 • (574) 295-5280 • [www.gemstonemusical.com](http://www.gemstonemusical.com)

NEC: It's about the music.



The Jupiter String Quartet, currently enrolled in NEC's Professional String Quartet Training Program, and winners of the 2004 Grand Prize and Gold Medal at the Fischhoff National Chamber Music Competition, 2004 Banff International String Quartet Competition, and 2005 Young Concert Artists International Auditions.

# Chamber Music at NEC

**NEW ENGLAND CONSERVATORY is home to a world-class chamber music program, featuring:**

**Professional String Quartet Training Program**

**Professional Piano Trio Training Program**

**Jury-selected Honors Ensembles**

**Faculty-coached Student Ensembles**

**The Borromeo Guest Artist Competition**

**NEW ENGLAND  
CONSERVATORY**

*Application deadline: December 1, 2006. NEC is an equal opportunity, affirmative action institution. Photo by Susan Wilson.*

Lucy Stoltzman, Chair of Chamber Music

#### *Chamber Music Faculty*

Norman Bolter  
Borromeo String Quartet  
Nicholas Kitchen, violin  
Kristopher Tong, violin  
Mai Motobuchi, viola  
Yeesun Kim, cello

James Buswell  
Stephen Drury  
William Fedkenheuer  
John Gibbons  
John Heiss  
Martha Strongin Katz  
Paul Katz  
(Professional String Training Program)

Laurence Lesser  
Carol Ou  
Donald Palma  
Kenneth Radnofsky  
Robert Paul Sullivan  
Irma Vallecillo  
Vivian Hornik Weilerstein  
(Professional Piano Trio Training Program)  
William Wrzesien  
Benjamin Zander  
Patricia Zander  
and other members of  
the NEC College faculty

Resident Ensembles: *Borromeo String Quartet, NEC's Weilerstein Trio*

Office of Admission  
290 Huntington Ave., Boston MA 02115  
Tel: 617-585-1101 Fax: 617-585-1115  
admissions@newenglandconservatory.edu

[www.newenglandconservatory.edu](http://www.newenglandconservatory.edu)



# SENIOR SEMIFINAL WIND REPERTOIRE

Friday May 5, Washington Hall

Each ensemble has submitted a program at least forty minutes in length. The Jury will have chosen selected movements or segments totaling not more than twenty-five minutes.

Repertoire selections will not be announced.

Please hold applause until the conclusion of the twenty-five minute audition.

## 9:30 a.m. - W1 Red Lion Brass Quintet

*Northwestern University, Evanston, Illinois*

Michael Nitchie, 22, Trumpet  
Caroline Schafer, 20, Trumpet  
Joel Benway, 25, Horn  
Michael Maier, 22, Trombone  
Elliot Dushman, 22, Tuba

Brass Quintet No. 1, Op. 5 Ewald  
Moderato  
Adagio – Allegro vivace – Adagio  
Allegro moderato

Laudes Jan Bach  
Reveille  
Scherzo  
Cantilena  
Volta

Music for Brass Instruments Ingolf Dahl  
Chorale Fantasy  
Intermezzo  
Fugue

## 10:00 a.m. - W2 Kallima Quintet

*Chicago, Illinois*

Connie Schoepflin, 23, Flute  
Naomi Bensdorf, 28, Oboe  
Daniel Won, 29, Clarinet  
Erich Peterson, 35, Horn  
Karl Rsaza, 28, Bassoon

Overture to Candide Bernstein/arr. Benyas

Quintet in E Minor, Op. 67, No. 2 Danzi  
Allegro Vivo  
Larghetto  
Minuetto  
Allegretto

Sechs Bagatellen für Bläserquintett Ligeti  
Allegro con spirito  
Rubato. Lamentoso  
Allegro Grazioso  
Presto Ruvido  
Adagio. Mesto  
Molto Vivace. Capriccioso

Quintet in A Major, Op. 43 Nielsen  
Allegro ben moderato  
Menuet  
Praeludium  
Tema con Variazione

## 10:30 a.m. - W3 Cayuga Saxophone Quartet

*Ithaca College, Ithaca, New York*

Joel Diegert, 23, Soprano Saxophone  
Heidi Bellinger, 22, Alto Saxophone  
Allison Dromgold, 22, Tenor Saxophone  
Timothy Rosenberg, 22, Baritone Saxophone

Backburner Ticheli

String Quartet Op. 20, No. 5 Haydn/ arr. Walter  
Moderato  
Minuet  
Adagio  
Finale

Blow! Goldstein

Rasch Donatoni

Quatuor pour Saxophones Desenclos  
Allegro non troppo  
Andante  
Poco largo ma risoluto - Allegro energico

**-Break-**

## 11:15 a.m. - W4 Arundo Winds Quintet

*University of Colorado at Boulder, Boulder, Colorado*

Gina Vega, 28, Flute  
Sarah Mellander, 25, Oboe  
Jerome Fleg, 25, Clarinet  
Kaori Uno, 25, Bassoon  
Megan Garrison, 24, Horn

Woodwind Quintet in B-flat Major, Op. 56, No.1 Danzi  
Allegretto  
Andante con moto  
Menuetto - Allegretto  
Allegro

Quintette Francaix  
Andante tranquillo – Allegro assai  
Presto  
Tema con variazioni  
Tempo di marcia francese

Aires Tropicales for Woodwind Quintet D'Rivera  
Alborada  
Son  
Habanera  
Vals Venezolano  
Dizzyness  
Contradanza  
Afro

# SENIOR SEMIFINAL WIND REPERTOIRE

Friday May 5, Washington Hall

Each ensemble has submitted a program at least forty minutes in length. The Jury will have chosen selected movements or segments totaling not more than twenty-five minutes.

Repertoire selections will not be announced.

Please hold applause until the conclusion of the twenty-five minute audition.

## 11:45 a.m. - W5 Element Saxophone Quartet

*Mystic, Connecticut*

Joshua Thomas, 30, Soprano Saxophone

Greg Case, 34, Alto Saxophone

Adam Williamson, 27, Tenor Saxophone

Jeffrey Emerich, 29, Baritone Saxophone

Rush Kechley

Quatuor pour Saxophones Jeanjean

Gaieté Villageoise

Doux Paysage

Papillons

Concert Sur la Place

Quatuor pour Saxophones, Op. 102 Schmitt

Avec une sage décision

Vif

Assez Lent

Animé sans excès

Backburner Ticheli

Grave et Presto Rivier

## 12:15 p.m. - W6 Simpatico Quartet

*DePaul University, Chicago, Illinois*

Youna Cho, 23, Clarinet

Theodore Mulvey, 21, Clarinet/Bass Clarinet

Leah Schwartz, 22, Clarinet

David Yandl, 23, Clarinet

Three Sketches, Op. 44, No. 2 Kubizek

Sehr frei, rhapsodisch

Lento, misterioso

Vivace

Six Pièces d'Audition pour 4 Clarinettes en Sib DeFaye

I.

II.

III.

IV.

V.

VI.

Serenade nach Altgrazer Kontratzen für vier Klarinetten, Op. 83c Takacs

Ouverture

Serenade

Kontratanz

Polka

Menuett

Finale, Dudelsack-Cornemuse

Canonic Suite for Four Clarinets in B-flat Elliott Carter

Deciso

Allegretto con moto

Allegro

-Break-

## 2:00 p.m. - W7 BAQ Quintet

*Northwestern University, Evanston, Illinois*

Amy Taylor, 24, Flute

Erin Horan, 24, Oboe

Andrew Dees, 22, Clarinet

Jason Carlson, 23, Bassoon

Alison Sawyer, 26, Horn

Aires Tropicales for Woodwind Quintet D'Rivera

Alborada

Son

Habanera

Vals Venezolano

Dizzyness

Contradanza

Afro

Quintet in F Minor, Op. 99, No. 2 Reicha

Larghetto, Allegro

Andante

Menuetto

Allegro poco vivace

## 2:30 p.m. - W8 ViM

*Eastman School of Music, Rochester, New York*

Kristin Rarick, 21, Soprano Saxophone

Michael Matlock, 20, Alto Saxophone

Dimitrios Kostaras, 20, Tenor Saxophone

Richard Miserendino, 21, Baritone Saxophone

Mountain Roads Maslanka

Overture

Chorale: Wo soll ich fliehen

Aria (in the style of a chorale prelude)

Chorale

Aria

Finale

Grave et Presto Rivier

Backburner Ticheli

# SENIOR SEMIFINAL WIND REPERTOIRE

Friday May 5, Washington Hall

Each ensemble has submitted a program at least forty minutes in length. The Jury will have chosen selected movements or segments totaling not more than twenty-five minutes.

Repertoire selections will not be announced.

Please hold applause until the conclusion of the twenty-five minute audition.

## 3:00 p.m. - W9 Frangipani Winds

*Bloomington, Indiana*

Lissie Okopny, 21, Flute

Jamie Roberts, 21, Oboe

Kristin King, 22, Clarinet

William May, 22, Bassoon

Timothy Huizenga, 20, Horn

Wind Quintet No. 1 Szervanszky  
 Adagio  
 Allegro Scherzoso  
 Andante  
 Allegro Vivace

Golden Age Polka Shostakovich/ arr. Christensen  
 Allegretto

Aires Tropicales for Woodwind Quintet D'Rivera  
 Alborada  
 Son  
 Habanera  
 Vals Venezolano  
 Dizziness  
 Contradanza  
 Afro

**-Break-**

## 3:45 p.m. - W10 Lago Flute Quartet

*Pittsburgh, Pennsylvania/New York, New York*

Alan Berquist, 25, Flute

Alison Crossley, 22, Flute

Katy McKinney, 22, Flute

Cecilia Ulloque, 25, Flute

Jour d'été à la montagne Bozza  
 Pastorale  
 Au bord du torrent  
 Le chant des forêts  
 Ronde

Just a short version Offermans

Dances of the Lake Fromm  
 Allegro  
 Andante Animato  
 Presto

4 Flutes Quartet Variego

Fuga y Misterio Piazzolla/ arr. Jauregui

Overture to "The Nutcracker Suite" Tchaikovsky/ arr. Karpyak

## 4:15 p.m. - W11 Arizona State University Saxophone Quartet

*Arizona State University, Tempe, Arizona*

Colin Lippy, 28, Soprano Saxophone

Kevin Feeken, 28, Alto Saxophone

Michael Napoleon, 23, Tenor Saxophone

Miguel Angel Carrasco, 20, Baritone Saxophone

Capriccio Sopra L'Aria  
 "Or Che Noi Remena" Frescobaldi/ arr. Napoleon  
 Prima parte  
 Secunda parte  
 Terta parte  
 Quarta parte  
 Quinta parte

Grave et Presto Rivier

July Torke

Quatuor pour saxophones Feld  
 Moderato assai - Allegro  
 Elegia  
 Scherzo  
 Intermezzo  
 Final

## 4:45 p.m. - W12 CINCO

*Chicago, Illinois*

Ryan Barwise, 28, Trumpet

Mike Sapienza, 27, Trumpet

Anna Mayne, 28, Horn

Brian Risinger, 28, Trombone

Jared Bulmer, 27, Tuba

Brass Quintet No. 3, Op. 7 Ewald  
 Allegro moderato  
 Intermezzo  
 Andante  
 Vivo

Daylight at Midnight Wilson  
 Try not to remember  
 Meditation: don't ever forget  
 We Resolve

Quartet No. 12 in D-flat Major, Shostakovich/ arr. Reynolds  
 Op. 133  
 Moderato-Allegretto  
 Allegretto-Adagio-Moderato-Allegretto

# SENIOR SEMIFINAL WIND REPERTOIRE

Saturday May 6, Washington Hall

Each ensemble has submitted a program at least forty minutes in length. The Jury will have chosen selected movements or segments totaling not more than twenty-five minutes.

Repertoire selections will not be announced.

Please hold applause until the conclusion of the twenty-five minute audition.

## 9:30 a.m. - W13 Konisch Saxophone Quartet

Northern Arizona University, Flagstaff, Arizona  
Dannel Espinoza, 22, Soprano Saxophone  
Michael Mortarotti, 21, Alto Saxophone  
Josh Meyers, 24, Tenor Saxophone  
Raul Delgado, 22, Baritone Saxophone

Saxophon-Quartett	Müller
Satz	
Sehrdrei, geheimnisvoll	
Allegro	
Tempo di Buierias	
Rondo per 4 saxophoni	Lukás
Quartette	Florio
Andante	
Allegro	
Total	
Planyiment	Brotons
Mecanitzacio	
Clam opressin	
Massifiacio	

## 10:00 a.m. - W14 Cosmopolitan Winds

Mystic, Connecticut  
Carla Parodi, 29, Oboe  
Kathryn Curran, 29, Clarinet  
Stevi Caufield, 25, Bassoon

Divertissement	Francaix
Prelude	
Allegretto Assai	
Elegie	
Scherzo	
Trio in E-flat Major for Oboe, Clarinet and Bassoon, Op. 71	Beethoven
Adagio - Allegro	
Adagio	
Menuetto-quasi Allegretto	
Rondo-Allegro	
Trio for Oboe, Clarinet and Bassoon	Lutoslawski
Allegro Moderato	
Poco Adagio	
Allegro Giocoso (Rondo)	
Trio II for Flute (Oboe), Clarinet and Bassoon, Op. 61	Devienne
Allegro	
Rondo-Allegro	

## 10:30 a.m. - W15 Metroplex Brass Quintet

University of Southern California, Los Angeles, California  
Robert Schaer, 26, Trumpet  
Mike Davis, 24, Trumpet  
Dylan Hart, 23, Horn  
Alex Zacharella, 28, Trombone  
Zach Collins, 24, Tuba

Brass Quintet No. 1	Wilder
Trumpet Prelude	
Elegy for Horn	
Tuba Showpiece	
Lyric Piece for Trombone	
Toccata	
Finale	
Colchester Fantasy	Ewazen
The Rose and Crown	
The Marquis of Granby	
The Dragoon	
The Red Lion	
Morning Music	Sampson
Total Time	
Four Monteverdi Madrigals	Monteverdi/ arr. Mase
Si chi'io vorrei morire	
Non piu Guerra, pietate	
Ah, dolente partita	
Quel augellin che canta	

America (from West Side Story) arranged by Michael B. Nelson

## 11:00 a.m. - W16 Four Corners Saxophone Quartet

University of Minnesota, Minneapolis, Minnesota  
Stephen Page, 22, Soprano Saxophone  
Kristen K. Hanich, 29, Alto Saxophone  
Curtis Bamford, 23, Tenor Saxophone  
José A. Zayas-Cabán, 22, Baritone Saxophone

Quatuor pour Saxophones	Désenclos
Allegro non troppo	
Andante	
Poco largo ma risoluto - Allegro energico	
Saxophone Quartet	Froom
I.	
II.	
III.	
Premier Quatuor, Op. 53	Singelée
Andante - Allegro	
Adagio sostenuto	
Allegro vivace	
Allegretto	



# RICE UNIVERSITY

## The Shepherd School of Music

offers pre-professional training for musicians, combining the intensity of a conservatory experience with the educational excellence of a renowned private university. Our illustrious faculty of artist-teachers dedicate themselves to cultivating the special talents and skills of each individual student.

Rice University, The Shepherd School of Music

Director of Music Admissions 713.348.4854  
P.O. Box 1892 [www.rice.edu/music](http://www.rice.edu/music)  
Houston, Texas 77251

Rice University is committed to affirmative action and equal opportunity in education and employment. Rice does not discriminate on the basis of race, color, religion, sex, sexual orientation, national or ethnic origin, age, disability or veteran status.

### VIOLIN

Kenneth Goldsmith  
Sergiu Luca  
Kathleen Winkler

### VIOLA

James Dunham  
Karen Ritscher

### CELLO

Norman Fischer  
Lynn Harrell  
Brinton Smith

### DOUBLE BASS

Paul Ellison  
Timothy Pitts

### FLUTE

Leone Buyse

### OBOE

Robert Atherholt

### CLARINET

Michael Webster

### BASSOON

Benjamin Kamins

### TRUMPET

Marie Speziale

### HORN

William  
VerMeulen

### TROMBONE

David Waters

### TUBA

David Kirk

### PERCUSSION

Richard Brown

### HARP

Paula Page

### PIANO

Brian Connelly  
Jeanne Kierman  
Fischer  
Jon Kimura Parker  
Robert Roux  
C. Dean Shank, Jr.

### ORGAN

Clyde Holloway

### VOICE

Kathleen Kaun  
Stephen King  
Susanne Mentzer

### OPERA STUDIES

Richard Bado  
Janet de Chambrier  
Debra Dickinson  
Susan Dunn  
Michael Franciosi

### CONDUCTING

Hans Graf  
Thomas Jaber  
Larry Rachleff

### WOODWIND ENSEMBLES

Leone Buyse  
Thomas LeGrand  
Janet Rarick  
Michael Webster

### COMPOSITION & THEORY

Karim Al-Zand  
Anthony Brandt  
Shih-Hui Chen  
Arthur Gottschalk  
Pierre Jalbert  
Richard Lavenda  
Kurt Stallmann

### MUSIC HISTORY

Walter Bailey  
Gregory Barnett  
Marcia Citron  
David Ferfis

# OUR FACULTY

Fine music, like fine printing,  
is so much more than ink on paper.



It's talent, professionalism and practice that make the printed page come to life.



Mossberg & Company Inc.  
Precisely.

# SENIOR SEMIFINAL STRING REPERTOIRE

Friday May 5, Decio Mainstage Theatre, DeBartolo Performing Arts Center

Each ensemble has submitted a program at least forty minutes in length. The Jury will have chosen selected movements or segments totaling not more than twenty-five minutes.

Repertoire selections will not be announced.

Please hold applause until the conclusion of the twenty-five minute audition.

## 9:30 a.m. - S1 Wo-Men Quartet

Cleveland Institute of Music, Cleveland, Ohio

Jinjo Cho, 17, Violin  
Karla Donehew, 21, Violin  
Yu Jin, 22, Viola  
Maaike Harding, 21, Cello

String Quartet in C Major, K. 465 "Dissonance" K. 465      Mozart  
Adagio - Allegro  
Andante cantabile  
Menuetto: Allegro  
Allegro molto

String Quartet No. 2, Op. 17      Bartok  
Moderato  
Allegro molto capriccioso  
Lento

## 10:00 a.m. - S2 Shema Trio

Eastman School of Music, Rochester, New York  
University of Cincinnati, Cincinnati, Ohio

Saehee Uhm, 26, Violin  
Sae Rom Kwon, 25, Cello  
Joonhee Kim, 26, Piano

Piano Trio in B-flat Major, K. 502      Mozart  
Allegro  
Larghetto  
Allegretto

Piano Trio in C Minor, Op. 101      Brahms  
Allegro energico  
Presto non assai  
Andante grazioso  
Allegro molto

Piano Trio "Vitepsk"      Copland

## 10:30 a.m. - S3 Tokai String Quartet

Toronto, Ontario  
Amanda Goodburn, 29 Violin  
Csaba Koczó, 30, Violin  
Yosef Tamir, 28, Viola  
Rafael Hoekman, 30, Cello

String Quartet in G Minor, Op. 20, No. 3      Haydn  
Allegro con spirito  
Menuet: Allegretto  
Poco Adagio  
Finale: Allegro di Molto

String Quartet in A Minor, Op. 13      Mendelssohn  
Adagio - Allegro vivace  
Adagio non Lento  
Allegretto con Moto  
Presto

-Break-

## 11:15 a.m. - S4 Trio Lunaire

University of Cincinnati, College-Conservatory of Music, Cincinnati, Ohio

Joshua Ulrich, 23, Violin  
Aaron Ludwig, 23, Cello  
Sujung Cho, 29, Piano

Piano Trio in C Minor, Op. 66      Mendelssohn  
Allegro energico e con fuoco  
Andante espressivo  
Scherzo: Molto allegro quasi presto  
Finale: Allegro appassionato

Piano Trio in E Minor, Op. 67      Shostakovich  
Andante - Moderato - Poco più mosso  
Allegro con brio  
Largo  
Allegretto - Adagio

## 11:45 a.m. - S5 Alianza String Quartet

Yale School of Music, New Haven, Connecticut

Sarita Kwok, 25, Violin  
Lauren Basney, 26, Violin  
Ah Young Sung, 26, Viola  
Dmitri Atapine, 25, Cello

String Quartet No. 3 in E-flat Minor, Op. 30      Tchaikovsky  
Andante Sostenuto - Allegro moderato  
Allegretto vivo e scherzando  
Andante funebre e doloroso ma con moto  
Finale: Allegro non troppo e risoluto

String Quartet No. 2, Op. 17      Bartok  
Moderato  
Allegro molto capriccioso  
Lento

## 12:15 p.m. - S6 Fireborne Trio

New York, New York  
Susanne Hou, 28, Violin  
Sarah Carter, 23, Cello  
Daniel Spiegel, 25, Piano

Piano Trio in E Minor, Op. 90, "Dumky"      Dvorak  
Lento maestoso - Allegro vivace, quasi doppio movimento  
- Tempo I - Allegro molto  
Poco adagio - Vivace non troppo  
Andante - Vivace non troppo - Andante - Allegretto  
Andante moderato (quasi tempo di marcia) - Allegretto  
scherzando - Meno mosso - Allegro - Moderato  
Allegro  
Lento maestoso - Vivace, quasi movimento - Lento - Vivace

Piano Trio in A Minor, Op 50      Tchaikovsky  
Pezzo elegiaco  
Tema con variazioni  
Variazione, finale, e coda

# SENIOR SEMIFINAL STRING REPERTOIRE

Friday May 5, Decio Mainstage Theatre, DeBartolo Performing Arts Center

Each ensemble has submitted a program at least forty minutes in length. The Jury will have chosen selected movements or segments totaling not more than twenty-five minutes.

Repertoire selections will not be announced.

Please hold applause until the conclusion of the twenty-five minute audition.

**-Break-**

## 2:00 p.m. – S7 Ariel Quartet

*New England Conservatory, Boston, Massachusetts*

Alexandra Kazovsky, 21, Violin

Gershon Gerchikov, 21, Violin

Sergey Tarashchansky, 20, Viola

Amit Even-Tov, 21, Cello

String Quartet in A Minor, Op. 132 Beethoven

Assai sostenuto-Allegro

Alegro ma non tanto

Molto Adagio-Andante

Alla Marcia, assai vivace

Allegro appassionato

A Sad Paven Davies

For These Distracted Tymes

## 2:30 p.m. - S8 Black Pearl Trio

*University of North Texas, Denton, Texas*

Yennifer Correia, 22, Violin

Kevin Park, 23, Cello

Paul McCarroll, 22, Piano

Piano Trio in E-flat Major, Op. 1, No. 1 Beethoven

Allegro

Andante cantabile

Scherzo

Finale: Presto

Piano Trio in G Minor, Op. 15 Smetana

Moderato assai

Allegro ma non agitato

Finale: Presto

## 3:00 p.m. – S9 Azmari String Quartet

*Northern Kentucky University, Artists-in-Residence, Cincinnati, Ohio*

Christina Merblum, 28, Violin

MinTze Wu, 29, Violin

Meghan Casper, 31, Viola

Rebecca Merblum, 28, Cello

String Quartet No. 4 Bartok

Allegro

Prestissimo, con sordino

Non troppo lento

Allegretto pizzicato

Allegro molto

String Quartet in A-flat Major, Op. 105 Dvorak

Adagio ma non troppo – Allegro appassionato

Molto vivace

Lento e molto cantabile

Allegro non tanto

**-Break-**

## 3:45 p.m. – S10 Alcantara Piano Quartet

*University of California, Los Angeles (UCLA), Los Angeles, California*

Eric Wuest, 24, Violin

Yuming Chiu, 20, Viola

Alisha Bauer, 25, Cello

Ruby Cheng, 27, Piano

Piano Quartet No. 1 in G Minor, Op. 25 Brahms

Allegro

Andante con moto - Animato

Intermezzo: Allegro ma non troppo - Trio Animato

Rondo alla zingarese

Quartett Vasks

Preludio

Danze

Canti drammatici

Quasi una passacaglia

Canto prncipale

Postludio

## 4:15 p.m. - S11 Kailas String Quartet

*Rice University, Shepherd School of Music, Houston, Texas*

Jory Fankuchen, 28, Violin

Stephanie Fong, 28, Violin

John T. Posadas, 25, Viola

Emmanuelle Beaulieu Bergeron, 24, Cello

String Quartet No. 3 Bartok

Prima parte

Seconda parte

Ricapitulazione della prima parte

Coda

String Quartet in A Minor, Op. 51, No. 2 Brahms

Allegro non troppo

Andante moderato

Quasi Minuetto, moderato

Allegro non assai





*The pursuit of musical excellence is a journey that leads from the soul.*

*We recognize every effort because for over a century we've provided meticulously hand-crafted instruments for musicians of every level. Rely on the most reputable names in the industry for a performance that excels.*

CONN - SELMER, INC.

*We Make Legends.*

Bach • Selmer • C.G. Conn  
Leblanc • King • Holton  
Armstrong • Ludwig/Musser  
Glaesel • Scherl & Roth  
Lewis • Emerson

© Conn-Selmer, Inc. A Steinway Musical Instruments Company  
Elkhart, IN

[www.conn-selmer.com](http://www.conn-selmer.com)

# SENIOR SEMIFINAL STRING REPERTOIRE

Saturday May 6, Decio Mainstage Theatre, DeBartolo Performing Arts Center

Each ensemble has submitted a program at least forty minutes in length. The Jury will have chosen selected movements or segments totaling not more than twenty-five minutes.

Repertoire selections will not be announced.

Please hold applause until the conclusion of the twenty-five minute audition.

## 9:30 a.m. – S12 California Quartet

*Carlsbad, California*

Bridget Dolkas, 35, Violin

Maia Jasper, 24, Violin

Christine Grossman, 26, Viola

Erin Breene, 26, Cello

String Quartet in C Minor, Op. 18, No. 4                      Beethoven

Allegro ma non tanto

Andante scherzoso

Menuetto: Allegro, Trio

Allegretto

String Quartet in A Minor, Op. 13                              Mendelssohn

Adagio - Allegro vivace

Adagio non lento

Intermezzo: Allegretto con moto

Presto

String Quartet No. 1 in B Minor, Op. 50                      Prokofiev

Allegro

Andante molto; Vivace

Andante

## 10:00 a.m. – S13 Eero Trio

*University of Michigan, Ann Arbor, Michigan*

Omari Rush, 25, Clarinet

Nathanael Jasinski, 30, Cello

Veena K. Kulkarni, 33, Piano

Trio in B-flat Major, Op. 11                                      Beethoven

Allegro con brio

Adagio

Tema: Pria Ch'io l'impegno

Trio in D Minor, Op. 3    Zemlinsky

Allegro ma non troppo

Andante

Allegro

Sieben Balkantanze    Tajevic

Con moto

Rustico

Vivo

Sostenuto e cantabile

Allegro ritmico

Allegretto

Allegro quasi pesante

Presto

## 10:30 a.m. - S14 Hyperion String Quartet

*San Diego State University, San Diego, California*

Amanda Brown Brin, 26, Violin

Rachel Brown Englander, 29, Violin

Travis Maril, 25, Viola

Jonathan Brin, 26, Cello

String Quartet in F Minor, Op. 80                              Mendelssohn

Allegro vivace assai - Presto

Allegro assai

Adagio

Finale: Allegro molto

String Quartet No. 10 in A-flat Major, Op. 118              Shostakovich

Andante

Allegretto furioso

Adagio

Allegretto - Andante

## 11:00 a.m. – S15 Manhattan Piano Trio

*The Juilliard School, New York City, New York*

Milana Bahl, 27, Piano

Dmitry Lukin, 23, Violin

Dmitry Kouzov, 27, Cello

Piano Trio in B-flat Major, Op. 11                              Beethoven

Allegro con brio

Adagio

Tema: Pria Ch'io l'impegno

Piano Trio in D Minor, Op. 49                                      Mendelssohn

Molto allegro e agitato

Andante con moto tranquillo

Scherzo: Leggiero e vivace

Finale: Allegro assai appassionato

Piano Trio Elegiaque No. 1 in G Minor                      Rachmaninoff

Piano Trio No. 1 in C Minor                                      Shostakovich

DISCOVER IT. EXPLORE IT. GROW WITH IT.

# EASTMAN SCHOOL OF MUSIC

At Eastman, the study and collaborative spirit of chamber music play an essential role in fulfilling our goal of bringing music to every part of contemporary society. All Eastman chamber music faculty members hold dual appointments in other departments, and many members of our distinguished studio faculty regularly coach chamber music.

Application deadline December 1  
Early application deadline November 1

**EASTMAN**  
SCHOOL OF MUSIC  
UNIVERSITY OF ROCHESTER

800 388 9695 or 585 274 1060  
admissions@esm.rochester.edu  
[www.esm.rochester.edu](http://www.esm.rochester.edu)

## Chamber Music Faculty

Jean Barr, *co-chair*  
Timothy Ying, *co-chair*

Sylvie Beaudette  
Elinor Freer  
Anna Gourfinkel  
Anne Lindblom Harrow  
Margery Hwang  
Mark Kellogg  
Douglas Prosser  
Mark Salatino  
David Ying  
Janet Ying  
Phillip Ying

John Celentano,  
*professor emeritus*  
Abram Loft,  
*professor emeritus*

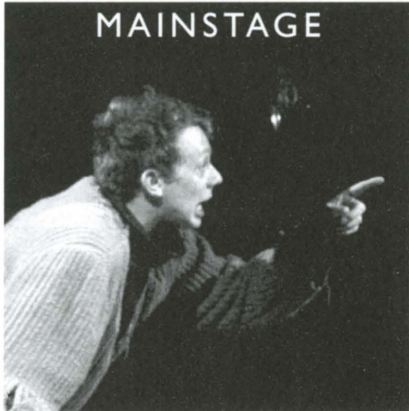
# Summer Shakespeare

The Professional Theatre In Residence  
at the University of Notre Dame

# 2006



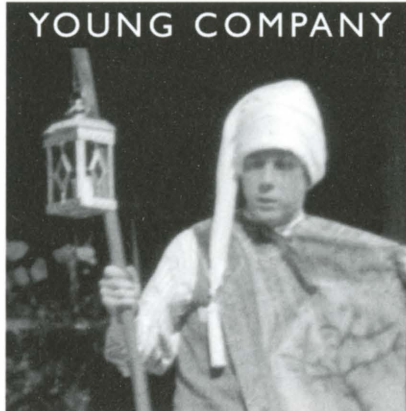
## MAINSTAGE



### THE COMEDY OF ERRORS

*By William Shakespeare*  
*Directed by William Brown*  
August 15-27

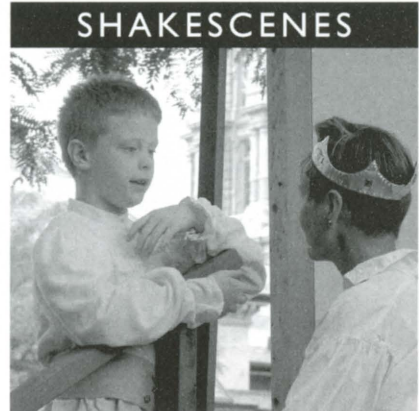
## YOUNG COMPANY



### THE BROTHERS MENAECHEMUS

*By Plautus*  
*Translated & adapted by Richard Prior*  
*Directed by Jay Paul Skelton*  
Mid-July through August

## SHAKESCENES



### COLLECTED SCENES

*By William Shakespeare*  
August 12 at 2:00 p.m.  
August 13 at 2:00 p.m.

**JOIN US FOR A SUMMER OF LAUGHTER AND LOVE!**

*For information about these events and more, visit our website at <http://shakespeare.nd.edu>*



2366 Miracle Lane  
Mishawaka, IN

(Town & Country Shopping Center)

**574-255-7889**

**800-260-0088**

*A Family Tradition in our  
Community Since 1956*

**WE'LL FIND A PIANO  
THAT'S RIGHT FOR YOU,  
AND WE'LL TEACH YOU  
HOW TO PLAY IT.**

**Inspiring, Relaxing, Rewarding.**

*There's no end to the way a piano  
enriches the lives of everyone  
who touches it. Only in a piano  
do you find so much beauty for  
the eye, the ear, and the soul.  
It's the perfect touch for your home.*

# THE FUTURE OF MUSIC AND SOUND

We hope you enjoy the inspired performances of the contestants at this prestigious event. Yamaha is proud to support the Fischhoff Competition, as well as professional musicians, students and educators around the world. It is our honor and our mission to provide the very best musical instruments and services possible. Because, like you, we love to create and listen to great music.



©2005 Yamaha Corporation of America [www.yamaha.com](http://www.yamaha.com)



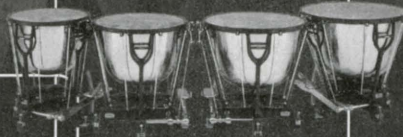
#### YAMAHA ARTIST SERVICES

Dedicated to meeting the unique needs of artists, performing arts organizations and educational institutions.



#### CUSTOM SERIES CLARINETS

Versatility and exceptional playability for orchestral players, chamber musicians and soloists throughout the world.



#### BERLIN-STYLE TIMPANI

The pinnacle of artistry and technology.



#### ARTIST MODEL C TRUMPET

A fundamental reexamination of trumpet design and manufacturing.



#### ACOUSTIC & SILENT VIOLINS

"Honor the past, play for the future."

# FISCHOFF NATIONAL ADVISORY COUNCIL

The Fischhoff National Advisory Council advises the Fischhoff Board of Directors on matters of a national scope. Each member brings a unique perspective on the nature of the arts in America.



**Dennis Bamber** was born in South Bend, Indiana. He grew up in a unique setting, having lived above and worked at his family business, the Sunny Italy Café, throughout his youth. He received his Bachelor's and Master's Degrees in Music Performance from Indiana University, Bloomington, Indiana. While attending Indiana University, he won a Bronze Medal at an International Saxophone Competition held in Geneva, Switzerland.

Upon graduation, Mr. Bamber returned to South Bend where he taught music at the University of Notre Dame, as well as performed both locally and nationally. In 1978, he founded The Woodwind and Brasswind in South Bend. From its modest beginning, the company has grown into one of the largest and leading retail music store operations in the country. Additional stores are located in Cherry Hill, New Jersey, as well as Paris, France. The Woodwind and Brasswind sells musical instruments and accessories by mail order and internet throughout the United States and around the world.



**Heidi Castleman** is currently Professor of Viola at the Juilliard School of Music, where she teaches at both pre-college and graduate levels. She has taught at the Cleveland Institute of Music, the Eastman School of Music, New England Conservatory, SUNY Purchase, Rice University and Philadelphia Musical Academy. Ms. Castleman has appeared at the Banff Centre, the Perlman Music Program, and the Aspen, Sarasota, Eastern and Blossom Music Festivals. She was also co-founder and viola faculty of the Quartet Program (1970 to 1990). A founding trustee of Chamber Music America, Ms. Castleman was its President from 1983 to 1987. She also served on the board of the American String Teachers Association (ASTA) and currently is on the board of the Perlman Music Program. As a panelist and committee member, Ms. Castleman has served the National Endowment for the Arts, the New York State Council of the Arts, the Music Educators National Conference (MENC), American String Teachers Association (ASTA), the National Association of Schools of Music, the Lila Wallace Readers Digest Fund and the Andrew Mellon Foundation. She is the recipient of both the Richard J. Bogomolny National Service Award from Chamber Music America and the Artist-Teacher of the Year Award by ASTA with NSOA.



Pianist **Wu Han** ranks among the most esteemed and influential classical musicians in the world today. She appears regularly in many prestigious venues across the United States, Europe and the Far East as both soloist and chamber musician, and has toured extensively as duo pianist with cellist David Finckel. Wu Han's wide-ranging musical activities include the founding of ArtistLed, classical music's first musician-directed and Internet-based recording company. The Denver Post described ArtistLed as "a classical music breakthrough." Wu Han and David Finckel serve as Artistic Directors of The Chamber Music Society of Lincoln Center. They are also Artistic Directors of Music@Menlo, a chamber music festival in Silicon Valley that has garnered international acclaim since its inception in 2003. Prior to launching Music@Menlo, Wu Han and David Finckel served for three seasons as Artistic Directors of SummerFest La Jolla.



**John A. Haynes** serves as the Judd and Mary Lou Leighton Director for the Performing Arts at the University of Notre Dame and founding executive director of the Marie P. DeBartolo Center for the Performing Arts. He was formerly President and Chief Executive Officer of the California Center for the Arts. Between 1992 and 1999, Mr. Haynes served as executive director of the Tony Award-winning Children's Theatre Company and School in Minneapolis, MN. He has been active as a national advocate for public arts funding, an NEA panelist, a frequent lecturer on the role of cultural institutions in community building and economic development and a cultural consultant to a variety of private and public entities, including the People's Republic of China. His early career included more than a decade as a program executive for CBS Television Network in New York and Viacom in Beverly Hills, CA.

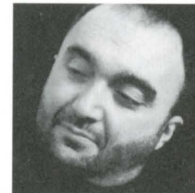


**Richard M. Kovacevich** is Chairman and Chief Executive officer of Wells Fargo & Company. He became President and CEO in November 1998, after the Wells Fargo-Norwest merger. In April 2001, he became Chairman. He joined Norwest in March 1986 as Vice Chairman, COO and head of the Banking Group. Before joining Norwest, he was a group executive and member of the Policy Committee at Citicorp and a division general manager at General Mills. He is a member of the Board of Directors of Cargill, Inc., Cisco Systems, Inc., and Target Corporation; the Federal Reserve's Federal Advisory Council; California Business Roundtable; Governor Arnold Schwarzenegger's California Commission for Jobs and Economic Growth; Chairman of San Francisco's Committee on JOBS; Vice President and member of the Board of Governors of the San Francisco Symphony; Vice Chairman and member of the Board of Trustees of the San Francisco Museum of Modern Art. He graduated from Stanford University, where he earned his M.B.A. and his bachelor's and master's degrees in industrial engineering.



Photo by Sallier

As cellist for 26 years of the Cleveland Quartet, **Paul Katz** appeared in more than 2,500 concerts on four continents and made 70 recordings which earned 11 GRAMMY nominations and two GRAMMY Awards. The members of the CQ were the first classical artists ever to appear on the GRAMMY Awards telecast. In addition to his studies with Bernard Greenhouse, he was a student of Gregor Piatigorsky, Janos Starker and Leonard Rose. In September 2001, he joined the faculty of the New England Conservatory of Music where he teaches cello and mentors a training program for young professional string quartets. In 2001, he was awarded Chamber Music America's highest honor, the National Service Award, given for a lifetime of distinguished service to the field of chamber music. The American String Teachers Association named Paul Katz their "Artist-Teacher 2003," and Indiana University awarded him its coveted *Chevalier du Violoncelle* for distinguished achievements and contributions to the world of cello playing and teaching.



**Massimo Mercelli** is a concert flutist and Artistic Director and Founder of the EMILIA ROMAGNA FESTIVAL in Italy. Since 2001, he has been a member of the Directive Committee of the European Festival Association. He has also been a member of the panel of judges in important international competitions such as the Jean-Pierre Rampal of Paris, the Geneva Competition, the Concert Artists' Guild of New York and the Fischhoff National Chamber Music Competition. In 2004, he performed with Krzysztof Penderecki and Philip Glass, among others. Mr. Mercelli performs regularly in the most important venues, such as Carnegie Hall (New York), the Gasteig (Munich), Teatro Colon (Buenos Aires), Victoria Hall and St. Martin-in-the-Fields (London), Parco della Musica (Rome), Filarmonica of Saint Petersburg, and at major music festivals in Lubljana (Berlin), Santander, St. Petersburg, Rheingau and Jerusalem, as well as the Bonn Beethoven Festival and Festival Cervantino.

## FISCHOFF BOARD OF DIRECTORS 2005-2006

### OFFICERS

Doug Mick, President  
David Aranowski, Vice President/Treasurer  
Patricia Dayton, Secretary  
Charlotte K. Ford, Fischhoff Director Emerita  
Thomas Rosenberg, Artistic Director

Richard Bailey  
Margie Collier  
Christine Cook  
Bernard E. Edwards, Jr.  
June H. Edwards  
Shirley Geraghty  
Alfred Guillaume, Jr.  
Janet Horvath  
William Knight  
Jean Ann Linney  
Christopher Kramer  
Marianne Peters

# FISCHOFF COMPETITION VOLUNTEERS

One of the major strengths of Fischhoff is our host of extraordinary volunteers. Without these dedicated friends, we would not be able to provide the personal care and attention to the talented young musicians who come to our community to compete.

## **Thank you to the following 2006 Fischhoff Competition Volunteers:**

*(the following were scheduled as of the program book deadline, April 12)*

Pam Allen	Aaron Divine	Michelle Grondin	Steven Mast	Christine Sopczynski
David Aranowski	Chris Divine	Eve Hardin	Gail Marti	Jackie Strabley
Mary Claire Aranowski	Kathy Divine	Janet Horvath	Ron May	Jerry Strabley
Bill Atwood	Paul Divine	Mark Kelley	Nancy Menk	Cyndi Sykes
Jan Atwood	Mary Lou Derwent	Bill Knight	Elaine Mick	Chris Temple
Kevin Baker	Bernie Edwards	Susan Knight	Karen Mick	Maggie Thomas
Rick Bailey	June Edwards	Ann Kolata	Charlie Nelson	Sara Thomas
Tammy Bailey	Marian Emery	Chris Kramer	Norma Jean Nelson	Tracey Thomas
Jackie Batill	Fritz Ettl	Valerie Kramer	Marijke Niles	Mary VanderKam
Ruth Ann Bauert	Julie Ettl	Martha Lange	Jerry Nurenberg	Helen VanGundy
Cindy Berryman	Dolores Fairley	Sarah Lange	Mary Nurenberg	Marie Weiss
Barbara Books	Priscilla Filos	Johanna Larson	Marianne Peters	Dolores Wilson
Alan Camren	Char Ford	Elaine Lee	Nancy Jo Pinney	Eleanor Wiswell
Pam Camren	Deb Frecka	Lawrence Lee	Helen Pollak	Nick Yasillo
Pam Chipman	Carolyn Garber	Linda Lewis	Randy Rompolo	Susan Yasillo
Lindsey Collier	Elizabeth Garcia	Jean Ann Linney	Emese Ronay Rivera	
Margie Collier	Shirley Geraghty	Juliana Lockman	Martha Rukavina	
Heather Correll	Bonnie Green	Rachaelle Lubinski	Clarisse Ruppe	
Pat Dayton	Emilie Grondin	Frances Maffitt	Judy Simcox	

## **Special thanks to the University of Notre Dame individuals and organizations for their invaluable help with Competition arrangements:**

Harriet Baldwin & Center for Continuing Education Staff  
Jaime Cripe, Eck Visitors' Center  
Hal Culbertson, Joan B. Kroc Institute for International Peace Studies  
Paul Eddy, Sacred Heart Parish  
Greta Fisher & Washington Hall Staff  
Jennifer Marley, Department of Music  
John Haynes & DeBartolo Performing Arts Center Staff  
Jean Ann Linney, Office of the Provost  
Lt. Jeff Korros & Staff of ND Security/Police Department  
Melonie Rhodes, Alumni Association  
Sarah Prince, DeBartolo Performing Arts Center  
Jacqueline Schmidt, DeBartolo Performing Arts Center  
Denise Sullivan, DeBartolo Performing Arts Center  
Dawn Templeton, Office of the Registrar  
Jessica Velazquez, Food Services-Catering  
Lisa Vervynckt, Center for Continuing Education  
Kevin Wangler, Department of Music  
Linda White, Joan B. Kroc Institute for International Peace Studies

## **The following individuals and organizations also deserve special thanks for their tremendous assistance:**

Ruth Ann Bauert, Merchandise Supervisor  
Jennifer Phillips, Barnes & Noble, Mishawaka, IN  
Lisa & Mike Roth, Shirks Piano & Organ Co., Mishawaka, IN

## **We deeply appreciate the following organizations that provided rehearsal space for Fischhoff ensembles:**

Center for Continuing Education/McKenna Hall, Notre Dame  
Eck Visitors' Center, University of Notre Dame  
Department of Music, Saint Mary's College  
Department of Music, University of Notre Dame  
Sacred Heart Parish Center, Notre Dame  
Woodwind & Brasswind, South Bend

## **Thank you to the following campus and community organizations for hosting lunch-time concerts:**

Atrium of Joan B. Kroc Institute for International Peace Studies  
Eck Visitors' Center  
Barnes & Noble





OBOES  
ENGLISH HORNS  
BASSOONS  
CONTRABASSOONS

**FOX PRODUCTS CORPORATION**

SOUTH WHITLEY, INDIANA 46787 • U.S.A.

Telephone: (260) 723-4888

Fax: (260) 723-6188

# THE FISCHOFF SOCIETY

The Fischoff National Chamber Music Association appreciates the generous support that comes from private sources. The following individuals made contributions from April 5, 2005 – April 10, 2006. Those making contributions after this date will be listed in next year's program book.

## Permanent Funding

### **Endowment of the Barbara Shields Byrum Senior String Bronze Medal**

Mr. & Mrs. W. S. Shields  
& Barbara Shields Byrum

### **Forté Campaign**

Mr. & Mrs. W. S. Shields  
& Barbara Shields Byrum  
Taylor Lewis-Garber & William Garber

(Fischoff has established endowment funds in the Community Foundation of St. Joseph County and the Elkhart County Community Foundation.)

## Annual Gifts

(Fischoff Society recognition begins at the \$100 level.)

### **Guarantor (\$5,000 and up)**

Dennis & Virginia Bamber  
Barbara Shields Byrum  
Doug & Karen Mick

### **Sustaining Fellow (\$2,000 to \$4,999)**

Richard & Tamara Bailey  
Paul & Ann Divine  
June Edwards  
Carolyn F. Garber  
Taylor Lewis-Garber & William Garber  
Shirley Geraghty  
Yatish Joshi & Louise Addicott  
Bill & Susan Knight  
Mr. & Mrs. James McAdams  
Ron Monsma\*  
Ray Plagens & Dr. Julie Plagens  
Emese Ronay Rivera\*  
Mr. & Mrs. William S. Shields  
Dr. Lynn Stettbacher

### **Encore Club (\$1,000 to \$1,999)**

Anonymous  
Elizabeth & Thomas Borger  
Christine & Glen Cook  
James & Patricia Dayton  
Ann & Paul Divine\*  
Mr. & Mrs. Burt Ford  
Mr. & Mrs. Glen Killoren  
Dr. Niles Price, Marijke, Kirsten, & Marc  
Marianne & Timothy Peters  
Kitty Rose & Ed Everett  
Dr. Irwin & Andra Press  
Thomas & Judy Van Der Heyden

\*in-kind donations

## Memorials and Honors

In loving memory of Marcy Rosenberg,  
through the Sylvan Fund of the Boston Foundation  
for the family of James Rosenberg.  
In Honor of June H. Edwards by Darla Lee  
Linda & George Wehrle in memory of Kristin Fiske

### **Ovation Club (\$500 to \$999)**

David & Ellen Aranowski  
Tim Baker  
Margie & Chris Collier  
Mr. & Mrs. Edward Cour  
Mr. & Mrs. Joe Dittmar  
Bernard Edwards, Jr.  
Mrs. Patricia Geoffroy  
Shirley Geraghty\*  
Mr. & Mrs. Michael Harmon  
David & Nancy Hendrix  
Chris & Valerie Kramer\*  
Hurbert & Judith Kuzmich  
Jean Ann Linney  
Mr. & Mrs. J. Buckley Miller  
Tom Rosenberg & Sarah Morrissette  
Kathleen Murphy  
Mr. & Mrs. Gordon Start  
Mr. & Mrs. Peter Trybula

### **Signature Club (\$250 to \$499)**

Mrs. Carolyn Aranowski  
Mr. & Mrs. Edward Cour  
Sue Derickson  
Mr. & Mrs. Joe Dittmar  
Marian Emery  
Frederick Ettl  
Bill & Leslie Gitlin  
Alfred & Melanie Guillaume, Jr.  
Dr. & Mrs. Walter Halloran  
Mr. & Mrs. Ronald Hawkins  
Mr. & Mrs. Frederick Hawkins  
Michael & Holly Hildreth  
Janet Horvath  
Mr. & Mrs. Joseph Iams  
Chris & Valerie Kramer  
Paul Kochanowski  
Bill & Peggy Laven  
Randolph & Mary Ann Rompola  
Mr. & Mrs. Samuel Stintson  
Dr. & Mrs. Robert Tomec

## THE EDUCATION CIRCLE

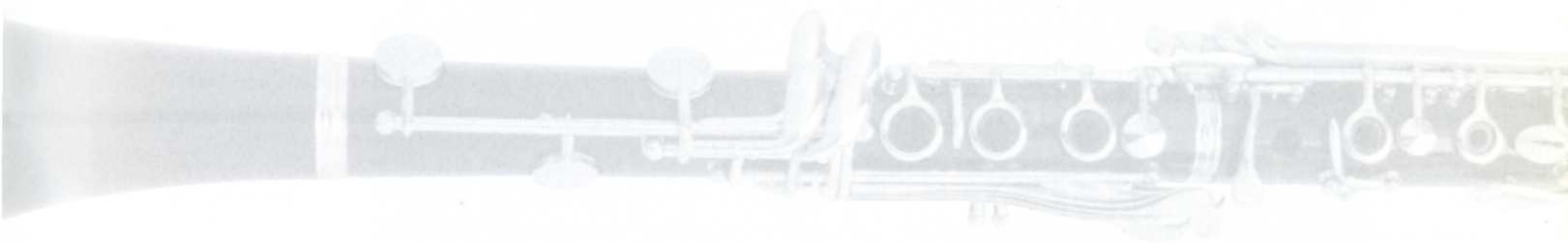
We wish to recognize

Elizabeth and Tom Borger  
Patricia and James Dayton  
Charlotte and Burt Ford  
Dr. Irwin and Andra Press

for their support of Fischoff's Residencies.

This year, 8,000 children, many underserved, experienced imaginative programming of the highest order.

We invite you to join  
THE EDUCATION CIRCLE  
with a designated gift  
of \$1,000. Together,  
we can create unforgettable  
encounters for our children.



**Salon Club (\$100 to \$249)**

Charles & Carol Allen  
 Dr. & Mrs. Tino Aquino  
 Beryl & Barbara Boss  
 Mr. & Mrs. Edward Bradley  
 Charles Bueter  
 Mark Chambers  
 Heidi Castleman  
 Pam & Dan Chipman  
 Elizabeth Cullity  
 Mr. & Mrs. Louis Davidson  
 Allan, Karen, Carrie, Mandy  
 & Kirby Dennis  
 Loren & Gloria Daily  
 Frank & Carol Deogracias  
 Beattie Dippo  
 Mr. & Mrs. Roger Dooley  
 Mr. & Mrs. Ken Eme  
 Georges Enderle  
 Michael Falzone  
 John Fink  
 George & Gladys Fischhoff  
 Richard Ford  
 Mr. & Mrs. Gerard Griffin  
 Jan Halperin  
 Charles & Anne Hillman  
 Stephen & Kathleen Hollenberg  
 Mr. & Mrs. Anthony Herron  
 Edna Huizinga  
 Anne M. Jordanich  
 Dr. Marie Garritson Jureit  
 Drs. William & Julia Knight  
 Ann & Jim Kolata  
 Mr. & Mrs. Gary Lamberti  
 Larry & Elaine Lee  
 Mr. & Mrs. Michael Lemmon  
 Jason & Melissa Little

Lyla Lockhart  
 Rich & Nancy Mah  
 Gail & Joe Mancini  
 Andrea Mather-Stow  
 & Perry Stow  
 Charles & Dee Mattes  
 John & Diana Matthias  
 Ronald May  
 Donald Maylath  
 Nancy Menk  
 Virginia Morrow  
 Yong Hi Moon  
 Dr. & Mrs. Robert Nelson  
 Dr. & Mrs. Stephen Nelson  
 Bill & Diane Nichols  
 Paul & Jutta Nitsch  
 John & Cordelia Owings  
 Frank Perri  
 Dr. George Plain  
 Shahla Pouya  
 Charles Quinn  
 Mr. Rowland Rose  
 Dr. & Mrs. Charles Rosenberg  
 Mr. & Mrs. Robert Rosenfeld  
 Alberta Ross  
 Mr. & Mrs. Joseph Ruppe  
 Scott & Carol Russell  
 Deborah Johnson Schwiebert  
 Dr. Salina Shrofel  
 Frederic Syburg  
 Samuel & Sharon  
 Van Landingham  
 Carole & James Walton  
 Dr. & Mrs. J. Robert Wegs  
 David & Rita Weiss  
 Dolores Wilson

**Friends of the Fischhoff (Up to \$99)**

Rev. Nicolas Ayo, C.S.C.  
 John R. Aaker  
 Dr. & Mrs. William Atwood  
 Joseph & Marzy Bauer  
 Dr. Leslie M. Bodnar  
 Mary Jane Buzolich  
 Samuel & Linda Bysong  
 George Coquillard  
 Marilyn Doyle  
 Rev. Paul Doyle, C.S.C.  
 Dolores & Bill Fairley  
 Martha Federico  
 Mr. & Mrs. Larry Guy  
 Mr. & Mrs. John Harper  
 Dr. & Mrs. Donald N.M. Horning  
 Brian Kilp  
 Darla Lee  
 Abram Loft  
 Dr. Jan E. Sanders McWilliams  
 Dr. Irwin Menachof  
 John & Marcella Million  
 Carol Ann Mooney & George Efta  
 Harriet Noble  
 Martha Pickrell  
 Mr. & Mrs. Lavon Oke  
 Carol O'Malley  
 Irene Rapp  
 Mr. & Mrs. Mike Santa  
 Dr. Marshall Sparberg  
 Mr. & Mrs. Charles Stanton  
 Dr. & Mrs. Dean Strycker  
 Dr. & Mrs. Jack Turnock  
 Mark & Cindy Wagoner  
 Reg Watkinson  
 Dr. Paul & Rachel Weinstein  
 Mr. & Mrs. Lynn Williams  
 Dr. Harley Yoder  
 Mr. & Mrs. Dennis Ziolkowski

# CORPORATE AND FOUNDATION BENEFACTORS

The following organizations made contributions from April 17, 2005 – April 8, 2006. Those making contributions after this date will be listed in next year's program book.

## Corporate & Foundation Gifts

Richard Harrison Bailey/The Agency — national poster & creative design\*  
Florence V. Carroll Fund — Florence V. Carroll Junior Scholarship Division — endowed  
June H. Edwards — Grand Prize Winner's Concert Sponsor  
Frederick S. Upton Foundation — national competition & general operating support  
Elnora Hartman Sticklely Scholarship Fund — Artist-of-the-Month scholarships  
Amateur Chamber Music Players Foundation — Competition, Junior Quarterfinal Division  
Buffet Crampon USA, Inc. — national competition poster sponsor  
Conn-Selmer, Inc. — national competition poster sponsor

## Permanent Funding (Endowment)

Florence V. Carroll  
Junior Prize Division

## Corporate Futurist (\$10,000 to \$50,000)

Indiana Arts Commission  
& The National Endowment  
for the Arts & The Community  
Foundation of St. Joseph County  
Mossberg & Co., Inc. \*  
Richard Harrison Bailey/The Agency, Inc.\*  
University of Notre Dame \*

## Corporate Guarantor (\$5,000 to \$9,999)

Allen Whitehill Clowes  
Frederick S. Upton Foundation  
Henkels Lecture Series, College of Arts  
and Letters, University of Notre Dame

## Corporate Sustaining Fellow (\$2,000 to \$4,999)

1st Source Bank  
AM General Corporation  
Amateur Chamber Music Players  
Arts Midwest, Heartland Arts Fund  
Foundation, Inc.  
Burkhart Advertising, Inc.  
Buffet Crampon, USA, Inc.  
Catering by Design,  
University of Notre Dame  
Conn-Selmer, Inc.  
Eastern Michigan University  
& Pease Concert Series  
Elnora Hartman Sticklely  
Scholarship Fund  
GTA Container  
Gemeinhardt Music  
Genesis Program and the City of Elkhart  
Stanz Foodservice, Inc.  
The Woodwind & Brasswind  
Yamaha Corporation of America

Fischhoff has established funds in the Community Foundation of St. Joseph County and the Elkhart County Community Foundation.

Fox Products Corporation — national competition poster sponsor  
Mossberg & Company, Inc. — national competition poster & event printing\*  
The Woodwind & Brasswind — national competition poster sponsor  
Gemeinhardt Company, Inc. — national competition poster sponsor  
Yamaha Corporation of America — national competition poster sponsor  
Richard & Tamara Bailey — juror dinner\*  
Burkhart Advertising, Inc. — Leighton Concert Hall sponsor for Assez viv  
Shirk Piano & Organ Company — pianos\*  
Penn High School Fine Arts Department — performance shell\*  
South Bend Tribune — "Artist-of-the-Month" features\*  
Elkhart Truth — "Artist-of-the-Month" features\*  
The Goshen News — "Artist-of-the-Month" features\*  
University of Notre Dame & the Marie P. DeBartolo Performing Arts Center  
— office space, competition & pianos\*

\*in-kind contributions

## Corporate Encore Club (\$1,000 to \$1,999)

Andrews University, Howard Lecture Series  
Baker and Daniels\*  
Crowe Chizek  
DeBartolo Performing Arts Center\*  
Direct Rug Imports\*  
Don Miller, ND Executive Chef\*  
Encore Performing Arts  
Fontana Chamber Arts  
Fox Products Corporation  
Gibson Insurance Group  
Graffis Furniture Company  
Graffis Furniture Company\*  
Divine-Johnson Group,  
Wachovia Securities  
Kat Holdings  
Madison Center  
Mostly Music, NEIU  
NIPSCO  
Norton Building Concert Series  
Plymouth Arts Commission, Inc.  
South Bend Community School Corp.  
South Bend Medical Foundation  
Wells Fargo Investments,  
MRCB Investment Group

## Corporate Ovation Club (\$500 to \$999)

Anthony Travel\*  
Bard College  
The Carriage House\*  
Fairmont Homes Inc.  
Hackman Frames, Inc.\*  
Junior League of South Bend, Inc  
Michael Angelos, The Event Company\*  
Oberlin Conservatory of Music  
Shirk Piano & Organ Co. \*  
Sorin's at the Morris Inn\*  
The Woodwind & Brasswind\*

## Corporate Signature Club (\$250 to \$499)

Brennan Dental Group  
The Boston Foundation, Sylvan Fund  
Claire Givens Violins  
Cleveland Institute of Music  
Eastman School of Music  
Interlochen Center for the Arts  
Laven Insurance  
Mannes College of Music  
Marie DeBartolo Performing Arts Center\*  
New England Conservatory of Music  
Shepherd School of Music, Rice University  
San Francisco Conservatory of Music  
South Bend Symphony Orchestra  
Saint Joseph County Public Library  
The Stanley Clark School  
Summer Shakespeare\*  
Trinity School  
University of Michigan School of Music  
University Village, Notre Dame  
Wabash College  
WFMT FM Chicago\*  
WAUS\*  
WSND\*  
WVPE\*  
Yellow Rose Florist\*

## Corporate Salon Club (\$100 to \$249)

301 Salon\*  
Art Hansen Photographic\*  
Blackthorn Golf Club\*  
Conservatory of Music\*  
Martins Super Markets\*  
National Wine & Spirits\*  
Potawatomi Zoo\*  
South Bend Chocolate Company\*  
South Bend Racquet Club\*  
Southold Dance Theater  
Swan Lake Resort\*  
Suzuki School of Music\*  
Woodcox Building Contractor, Inc.

\*in-kind contributions



THE  
FISCHOFF  
NATIONAL CHAMBER MUSIC ASSOCIATION

# Congratulations Fischhoff Participants!

For musicians, a visit to South Bend  
*must* include a visit to  
The World's Largest Music Center



The Woodwind & Brasswind  
4004 Technology Drive  
South Bend, Indiana 46628  
1-800-348-5003

# HISTORY OF FISCHOFF WINNERS

## SENIOR DIVISION GRAND PRIZE

(Grand Prize created in 1987)

- 2005 Lloyd Carr-Harris String Quartet, Montreal, Canada
- 2004 Jupiter String Quartet, Boston, MA
- 2003 verklärte quartet, Cleveland, OH
- 2002 Quintet Attacca, Chicago, IL
- 2001 ninth circle saxophone quartet, Ann Arbor, MI

## Senior String First Prize

- 2005 Lloyd Carr-Harris String Quartet, Montreal, Canada
- 2004 Jupiter String Quartet, Boston, MA
- 2003 verklärte quartet, Cleveland, OH
- 2002 Chiara String Quartet, Grand Forks, ND
- 2001 Eusia St. Qt., Chicago, IL
- 2000 Fry Street Quartet, Hickory, NC
- 1999 Corigliano String Quartet
- 1998 Avalon String Quartet
- 1997 Elm City Ensemble
- 1996 Miro String Quartet
- 1995 Sausalito St. Qt.
- 1994 Arianna St. Qt.
- 1993 Amernet String Quartet
- 1992 North Coast Trio
- 1991 Griffon String Quartet
- 1990 Trio Wanderer
- 1989 Miami St. Qt.
- 1988 Lafayette St. Qt.
- 1987 Harrington St. Qt.
- 1982 Ridge String Quartet

## Senior Wind First Prize

- 2005 Blue Square Saxophone Quartet, Bowling Green, OH
- 2004 Trio di Colore, Bloomington, IN
- 2003 Arizona State University Saxophone Quartet, Tempe, AZ
- 2002 Quintet Attacca, Chicago, IL
- 2001 ninth circle saxophone quartet, Ann Arbor, MI
- 2000 Lithium Saxophone Quartet, Bowling Green, OH
- 1999 The Extension Ensemble
- 1998 Catalyst (Sax Quartet)
- 1997 Canterbury Brass
- 1996 Eighth Blackbird
- 1995 Zephyros Wind Quintet
- 1994 Battell Quintet
- 1993 Hanson Wind Quintet
- 1992 Michigan State Sax Qt.
- 1991 Black Swamp Sax Qt.
- 1990 Interstate Brass
- 1989 Taft Woodwind Quintet
- 1988 MSU Grad. Sax Qt.
- 1987 Texas Sax Qt.
- 1982 Quintessential Brass

- 2000 Fry Street Quartet, Hickory, NC
- 1999 Corigliano String Quartet
- 1998 Avalon Quartet
- 1997 Elm City Ensemble
- 1996 Miro String Quartet
- 1995 Zephyros Wind Quintet
- 1994 The Arianna String Quartet

## Senior String Second Prize

- 2005 Kashii String Quartet, Cleveland, OH
- 2004 Calder Quartet, Los Angeles, CA
- 2003 Ensō String Quartet, Houston, TX
- 2002 Xanadu Trio, New York, NY
- 2001 Biava St. Qt., Cleveland, OH
- 2000 New England Conservatory Honors String Quartet, Boston, MA
- 1999 Basmati String Quartet
- 1998 Coolidge String Quartet
- 1997 Lipatti String Quartet
- 1996 Montagnana St. Qt.
- 1995 Anacapa String Quartet
- 1994 Plymouth String Quartet
- 1993 Assai String Quartet
- 1992 Rackham String Quartet
- 1991 Stony Brook Grad. Trio
- 1990 Rosalyra Quartet
- 1989 Aureole Trio
- 1988 Augustine Quartet
- 1987 Lafayette String Quartet
- 1982 Ambrogio Trio

## Senior Wind Second Prize

- 2005 Intrada Winds, New Haven, CT
- 2004 Scarborough Trio, New York, NY
- 2003 Triton Brass Quintet, Boston, MA
- 2002 Syrinx Saxophone Quartet, Evanston, IL
- 2001 Red Onion Sax. Qt., IL
- 2000 Vento Chiaro, Longy School of Music, Cambridge, MA
- 1999 Juniper Quintet
- 1998 Metropolis Trombones
- 1997 National Saxophone Quartet
- 1996 Four Corners Sax Qt.
- 1995 N. Illinois Sax Qt.
- 1994 Palo Verde Brass Work
- 1993 Cardinal Brass Quintet
- 1992 Manhattan Brass
- 1991 Helios
- 1990 Resounding Wind
- 1989 Prism Sax Quartet
- 1988 Saturday Brass
- 1987 (not published)
- 1982 Cincinnati Trombone Quartet

## Honorable Mention

- 2001 Tre Celesti
- 2001 Favriale Piano Quartet
- 1998 Sirens Saxophone Quartet
- 1998 Florestan Trio
- 1998 Rosalie Weinstein Woodwind Quintet
- 1998 Picasso String Quartet
- 1998 Blakemore Trio

- 1993 Amernet String Quartet
- 1992 North Coast Trio
- 1991 Griffon String Quartet
- 1990 Trio Wanderer
- 1989 Miami String Quartet
- 1988 Lafayette String Quartet
- 1987 Harrington String Quartet

## Senior String Third Prize

- 2005 Vinca String Quartet, Boulder, CO
- 2004 Rothko String Quartet, New York, NY
- 2003 The Harding Trio, Cleveland, OH
- 2002 Jung Trio, New Haven, CT
- 2001 Proteus 5, New York, NY
- 2000 Gotham Quartet, Rice University, Houston, TX
- 1999 In Flight 3
- 1998 Brutini String Quartet
- 1997 Avalon String Quartet
- 1996 Pacifica String Qt.
- 1995 Pacifica String Qt.
- 1994 Trio Selka
- 1993 Hawthorne String Qt.
- 1992 Catalina Trio
- 1991 Noc-Noc Quartet
- 1990 Westbrook String Qt
- 1989 Powell String Quartet
- 1988 Aramis String Quartet
- 1987 (not published)
- 1982 (no 3rd prize)

## Senior Wind Third Prize

- 2005 Twelve-Ten Saxophone Quartet, Ann Arbor, MI
- 2004 Third Rail Saxophone Quartet, Mystic, CT
- 2003 The Taliesin Trio, Ann Arbor, MI
- 2002 A Few Good Reeds, Indiana, PA
- 2001 BALA, Boston, MA
- 2000 Millennium Quartet, University of Illinois, Urbana, IL
- 1999 Red Stick Saxophone Quartet
- 1998 Arbor Trio
- 1997 Enigma Saxophone Quartet
- 1996 Quake City Camerata
- 1995 Transcontinental Sax Qt.
- 1994 Trio Selka-Kosower-Ohio
- 1993 Palo Alto Brass Quintet
- 1992 Hauson Wind Quintet
- 1991 Southspoon Wind Qt.
- 1990 Mercury Wind Quintet
- 1989 Meliora Brass Quintet
- 1988 Manhattan Wind Quintet
- 1987 (not published)
- 1982 (no 3rd prize)

# HISTORY OF FISCHOFF WINNERS

## JUNIOR DIVISION

### Junior 1st Prize

- 2005 Alisier Trio, Boston, MA
- 2004 Rattan Trio, Highwood, IL
- 2003 Ottava String Trio, Chicago, IL
- 2002 Orion Piano Trio, Fort Sheridan, IL
- 2001 LeConte Quartet
- 2000 Capriccio Quartet
- 1999 Fine Arts Trio
- 1998 MYA String Quartet
- 1997 Cumberland String Quartet
- 1996 MYA String Quartet
- 1995 Amaryllis String Quartet
- 1994 Schon Musik
- 1993 La Strada String Quartet
- 1992 Lake Shore String Quartet
- 1991 Greenfield String Qt.
- 1990 Peabody Prep Piano Qrt.
- 1989 Phoenix Quartet
- 1988 The Diller String Quartet
- 1987 Cardinal Quartet
- 1986 Music Center Youth Quartet
- 1985 ASTEC Quartet
- 1984 Rydell Quintet
- 1983 Music Center Quartet
- 1982 The String Quartet
- 1981 Medelsohn Piano Trio
- 1980 Interlochen String Quartet
- 1979 Rhee Gustavsson
- 1974-1978 (No records found)

### Junior 2nd Prize

- 2005 AYM Piano Trio, Chicago, IL
- 2004 Northway Quintet, New York, NY
- 2003 Subito Trio, Chicago, IL
- 2002 Vidancia Trio, Bethesda, MD
- 2001 Versailles Piano Quintet
- 2000 Harding Trio
- 1999 T3
- 1998 Waughtown Four Cello Quartet
- 1997 Musika Trio
- 1996 The Rose Trio
- 1995 Amaranth Trio
- 1994 Midwest Young Artists' Sextet
- 1993 Casulana Quartet
- 1992 Best Great Quartet
- 1991 Lake Shore Piano Qt.
- 1990 Thanatos String Quartet
- 1989 The Robinson Trio
- 1988 The Lorax String Quartet
- 1987 Premier Trio
- 1986 New School of Music Trio
- 1985 LeJuMa Piano Trio
- 1984 LeJuMa Piano Trio
- 1983 Clay-LaSalle Trio
- 1982 John Adams Quartet
- 1981 Brass Trio
- 1980 (No records found)
- 1979 (No records found)
- 1974-1978 (No records found)

### Junior 3rd Prize

- 2005 BAM Quartet, Chicago, IL
- 2004 Pandora's Trio, Chicago, IL
- 2003 LeMonde Trio, Interlochen, MI
- 2002 Ivory Winds, Chicago, IL
- 2001 Trio Una Corda
- 2000 Karma Quartet
- 1999 Biava Quartet
- 1998 Firebird Quartet
- 1997 MYA Chonky String Quartet
- 1996 The Fidelius Trio
- 1995 Russian Quartet
- 1994 Interlochen String Quartet
- 1993 Sigma
- 1992 Die Furellum Quartet
- 1991 The Thorne Trio
- 1990 The Thorne Trio  
(1st year 3rd prize awarded)

Until 1987, the wind and string categories were not separated; wind and string ensembles competed against each other for the top prizes. Following is a list of winners, which will include both wind and string ensembles. Note: 1982 was an isolated year in which the two categories were separated.

### Fischhoff Competition First Prize

- 1986 Cassatt String Qt, NYC
- 1985 Asbury Brass Quintet, Evanston, IL
- 1984 Meliora Quartet, Rochester, NY
- 1983 Casella Quartet, Rochester, NY
- 1982 (See String/Wind prize list)
- 1981 Curtis String Quartet, Phil. PA
- 1980 Vaener String Trio, Boston, MA
- 1979 Taylor St Qt, Berrien Springs, MI

### Fischhoff Competition Second Prize

- 1986 Cavani String Quartet
- 1985 Chamber Arts Quartet
- 1984 BU Honors Wind Quintet
- 1983 Ambrogio Trio
- 1982 (See String/Wind prize list)
- 1981 Landreth Quartet
- 1980 Martinu Piano Quartet
- 1979 Csardas Quartet

### Fischhoff Competition Third Prize

- 1986 Quintessence
- 1985 Franciscan Quartet
- 1984 Stony Brook Trio
- 1983 New Mode Trio
- 1982 (No 3rd Prize)
- 1981 " " "
- 1980 " " "
- 1979 " " "

## HISTORY OF GEOFFROY WINNERS

For almost two decades Kenneth Geoffroy was an originator of ideas and activities in the arts in Michiana. In 1967, he left his native Kansas to become Coordinator of Fine Arts for the South Bend Community School Corporation, a position he held until his untimely death in 1982.

Ken Geoffroy was a fine trombonist and active performer in numerous area groups. He was instrumental in the creation of the South Bend Youth Symphony and the Fischhoff National Chamber Music Competition. Because of his efforts for these and other music programs, it is especially appropriate that an annual Geoffroy Prize is awarded for the best Junior Division ensemble from North Central Indiana and lower Michigan.

### GEOFFROY PRIZE WINNERS

- 2005 – Four Star Quartet
- 2004 – Hawthorne String Quartet
- 2003 – Hawthorne String Quartet
- 2002 – High Strung (string quartet)
- 2001 – One Accord (harp trio)
- 2000 – South Bend Youth Symphony Woodwind Quintet
- 1999 – South Bend Youth Symphony Woodwind Quintet
- 1998 – Floyd (piano trio)
- 1997 – South Bend Youth Symphony Woodwind Quintet
- 1996 – Fuhring Trio (piano trio)
- 1995 – Fuhring Trio (piano trio)
- 1994 – Suzuki Talent Education of Michiana String Quartet
- 1993 – no record found
- 1992 – Brio Brass Quintet
- 1991 – no award given
- 1990 – Sobeyosy Cesele
- 1989 – Olympia String Quartet
- 1988 – Newbury String Quartet
- 1987 – no record found
- 1986 – Clay High Brass Quintet

# FISCHOFF ALUMNI: WHERE ARE THEY NOW?

*The Spotlight is on.....*



## **Calder Quartet**

2004 Senior String Division Silver Medal Winner, Fischhoff National Chamber Music Competition

2005-06

Lisa Arnold Resident Quartet, The Juilliard School of Music  
Washington Performing Arts Society's Kreeger String Series, Kennedy Center  
Colburn Chamber Artists Series, Colburn School, Los Angeles  
Mostly Mozart Festival, Lincoln Center for the Performing Arts, UCLA Live series  
Daniel Brewbacker String Quartet World Premiere, Alice Tully Hall at Lincoln Center  
for the Performing Arts  
Collaboration with Frank McCourt, setting his Pulitzer Prize-winning novel, *Angela's Ashes*, to music

## **Upcoming Events**

La Jolla Music Society's Discovery Series  
Los Angeles Chamber Orchestra Chamber Music Marathon

Management: MCM Artists  
info@mcartistsworldwide.com



## **Manhattan Brass**

1992 Senior Wind Division Silver Medal Winner, Fischhoff National Chamber Music Competition

Celebrating ten years of performances, commissions and premieres including works composed by jazz greats Wynton Marsalis and Paquito D'Rivera 10th Anniversary debut CD, *The Manhattan Project*

2005-06

"The Australians," Symphony Space, New York  
Artists-in-Residence, New School's Lang College, New York

## **Upcoming Events**

Santa Fe Chamber Music Festival  
The Tirolere Symphonie Orchestera, Innsbruck  
New School University Recital  
Guest Artists/Faculty, The Music School Summer Music Camp, American Fork, UT  
Caramoor International Music Festival, New York

Management: MCM Artists  
nchristensen@mcartistsworldwide.com



## **PRISM Quartet**

1989 Senior Wind Division Silver Medal Winner, Fischhoff National Chamber Music Competition

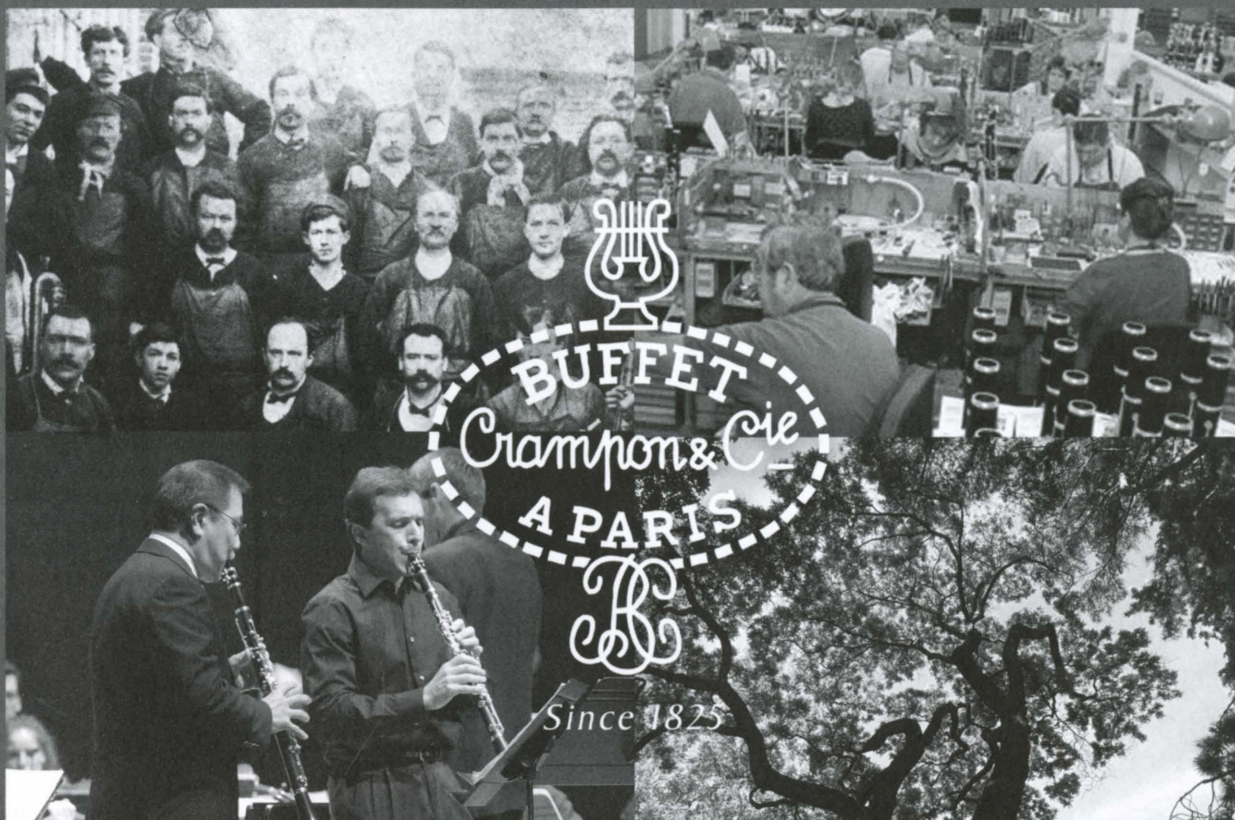
Founded in 1984, the PRISM Quartet has served as Artists-in-Residence at Settlement Music School and the Free Library of Philadelphia since 1994. PRISM may be heard weekly in the featured music to the new PBS series, *NOW* with Bill Moyers

2005-06

The New York & Philadelphia Recital Series:  
Pitch Black: The Music of Jacob ter Veldhuis at Trinity Center for Urban Life & Symphony Space in New York City  
Salvatore Sciarrino: Pagine & Canzoniere da Scarlatti at Trinity Center for Urban Life & Symphony Space, NY  
Steven Mackey: Animal Vegetable & Mineral with Nashville Symphony at the Tennessee Performing Arts Center  
Making Music Series: Music of Steven Mackey at Carnegie Hall

Management: Joanne Rile Artists Management  
joanner@rilearts.com





*For over 180 years, the combination of superior materials, master craftsmanship, and collaboration with the world's leading musicians has resulted in the finest clarinets.*

*This tradition and spirit has a name...  
Buffet Crampon.*



*New York • Paris • Tokyo*

*[www.buffetcrampon.fr](http://www.buffetcrampon.fr)*

# FROM THE EXECUTIVE DIRECTOR...



*"Just do what you're doing."*

Those wise words were spoken to me over ten years ago by Fischhoff board member and friend, Charlotte Ford. But, you need to know their context. She wasn't praising me for having great executive leadership skills. Not at all! She was passing along an encouragement, a quote that she had found helpful.

When things seem to get a bit too hectic or overwhelming, she said, "just do what you're doing." Stick to the plan. How that message changes in context!

The year 2005 was a good year for Fischhoff in terms of recognition. We received three special grants from local, state and national sources that focused on Fischhoff's performance. The locally-based Leighton Award for Nonprofit Excellence Special Recognition Award honored Fischhoff's educational endeavors. The Indiana Achievement Award for Sustainability of a Small Nonprofit provided wonderful state recognition. The National Endowment for the Arts

awarded Fischhoff a Challenge America grant in support of its Arts-in-Education Residency program. Each of these grants carried a cash gift of \$10,000. That \$30,000 was a tremendous boost to an organization that operates on a very modest annual budget.

While recognition and grants are tremendous and reassure us that we are sticking to mission and plan, it has still been a prickly year financially. I suspect Fischhoff is not alone in this situation – locally, statewide or nationally. We have seen a decrease in private contributions, grants and corporate underwriting.

We remain, however, committed to bringing the art of chamber music to as many people as we can and to recognizing the extraordinary talent of America's finest young chamber musicians who are at the heart of Fischhoff. To you, Fischhoff musicians, we repeat those valuable words — just do what you're doing.

Ann Divine  
Executive Director  
Fischhoff National Chamber Music Association

## Coming Events

- August 26, 2006: Twilight in the Pressbox, Notre Dame Football Stadium Pressbox
- October 13-22, 2006: Grand Prize Winner's Tour, Illinois, Michigan and Indiana
- November 13-17, 2006: Fischhoff Residency featuring the Triton Brass Quintet
- January 29-February 4, 2007: Fischhoff Residency featuring Jupiter String Quartet
- February 2007: Winter Gala
- July/August 2007: Grand Prize Winner's Tour, Italy, featuring the 2006 Grand Prize Winner

## IMPORTANT COMPETITION DATES

- March 7, 2007: Deadline for entries into the 2007 Fischhoff National Chamber Music Competition
- May 11-13, 2007: Fischhoff National Chamber Music Competition



Fischhoff Staff

# TOGETHER WE CAN MAKE BEAUTIFUL MUSIC

Your investment in The Fischhoff ensures that beautiful music — a power that crosses all cultural boundaries — unites and endures for many generations to come.

To make your gift to this great cause, please use the envelope included. It is greatly appreciated and needed.



THE  
**FISCHOFF**  
NATIONAL CHAMBER MUSIC COMPETITION

303 BROWNSON • NOTRE DAME, INDIANA 46556  
PHONE: 574.631.0984 • FAX: 574.631.2903 • [www.fischhoff.org](http://www.fischhoff.org)



THE  
**FISCHOFF**  
NATIONAL CHAMBER MUSIC COMPETITION

[www.fischhoff.org](http://www.fischhoff.org)

23 countries, nationalities and cultures  
are represented this year at Fischhoff.

America's Premier Educational Chamber Music Competition

Argentina

Australia

Canada

China

Columbia

England

Germany

Hungary

Ireland

Israel

Japan

Malaysia

Mexico

Moldova

Peru

Poland

Russia

South Africa

South Korea

Taiwan

Ukraine

USA

Venezuela