



THE 32nd ANNUAL

FISCHOFF

NATIONAL CHAMBER MUSIC COMPETITION

MAY 6, 7 & 8, 2005

AMERICA'S PREMIER EDUCATIONAL CHAMBER MUSIC COMPETITION

A new choice on the horizon

THE BARD COLLEGE CONSERVATORY OF MUSIC

An integrated double-degree program in
music and the liberal arts and sciences

Conservatory degree (B. Music) and liberal arts and
sciences degree (B.A.) in a field other than music

Hudson River campus 90 miles from New York City

Exciting performance opportunities include the
Frank O. Gehry-designed Fisher Center for the
Performing Arts, home of the Bard Music Festival

Limited enrollment: 140 students

Financial aid available

Robert Martin, *Director*
Melvin Chen, *Associate Director*

CONSERVATORY FACULTY INCLUDES

Ani Kavafian, Weigang Li, Laurie Smukler,
Arnold Steinhardt, *violin*; Michael Tree, Ira Weller,
viola; Peter Wiley, Sophie Shao, *cello*; Marji Danilow,
double bass; Melvin Chen, Jeremy Denk, Peter Serkin,
piano; Richard Goode, *piano master classes*; Laura Flax,
David Krakauer, *clarinet*; Marc Goldberg, *bassoon*;
Tara Helen O'Connor, *flute*; Julie Landsman, Jeffrey Lang,
horn; Laura Ahlbeck, *oboe*; Dawn Upshaw, *vocal arts*;
Colorado Quartet; Joan Tower, George Tsontakis,
composition; faculty of the Music Program at Bard College;
members of the *American Symphony Orchestra*

TO LEARN MORE, VISIT

www.bard.edu/conservatory

e-mail conservatory@bard.edu or call 845-758-7196



THE FISCHOFF

Thirty-second Annual National Chamber Music Competition

Sponsored by the NiSource Charitable Foundation

Welcome to the Fischhoff	2-4	The 32nd Annual Competition	21
The Fischhoff Staff	5	Junior Quarterfinal Jurors	22
Competition Schedule of Events	6	Semifinal Jurors	24
Welcome to Notre Dame	8	Medal and Scholarship Sponsors	26
The Fischhoff National Chamber Music Association	10	Junior Quarterfinal Repertoire	31
Financial Retrospective	11	Senior Semifinal Wind Repertoire	39
Fischhoff Arts-in-Education Residency	12	Senior Semifinal String Repertoire	45
Artist-of-the-Month	14	Supporting the Fischhoff	
Chamber Music Mentoring Project	15	Fischhoff National Advisory Council	52
Fischhoff's Culinary Feast VI	16	Fischhoff Board of Directors	53
Peer Ambassadors for Chamber Music	18	Fischhoff Volunteers	54
Soirees	19	The Fischhoff Society	56
Winner's Tour	20	Corporate and Foundation Benefactors	58
		Fischhoff Alumni: Where Are They Now?	62
		History of Fischhoff Winners	63
		Geoffroy Prize Winners	64
		From the Executive Director	68

A Note of Acknowledgement and Thanks

The Fischhoff Chamber Music Association Board of Directors and Staff are honored and delighted to acknowledge the contributions of the following businesses, academic institutions, and individuals. We are pleased to have the opportunity to thank them publicly:

The University of Notre Dame for providing office space, general assistance and hosting the 2005 Fischhoff Competition.

RHB/The Agency for graciously providing board meeting space.

Mark Kelley, Professor of Communication and Journalism, University of Maine, who serves as Master of Ceremonies for the Finals and Awards Ceremony.

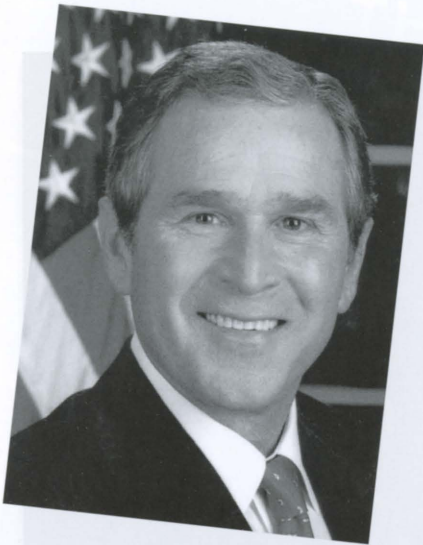
Michael Murphy Design for program layout.

The Fischhoff National Chamber Music Competition gratefully acknowledges the support of the competition by



Fischhoff National Chamber Music Association
 303 Brownson Hall, Notre Dame, IN 46556
 Phone: 574-631-0984 info@fischhoff.org www.fischhoff.org

FROM THE PRESIDENT OF THE UNITED STATES...



THE WHITE HOUSE
WASHINGTON

February 25, 2005

I send greetings to those gathered for the 32nd annual Fischhoff National Chamber Music Competition.

Music enriches lives and expresses the creative spirit of our citizens. Since 1973, the Fischhoff Competition has promoted excellence in musical study and performance while strengthening international ties of friendship and fostering goodwill.

I commend participating artists for your determination and perseverance in developing your talent, and I encourage you to continue to share your gifts. I applaud families and teachers for your guidance and support. Your dedication helps ensure the presentation and continuation of musical excellence among young chamber musicians.

Laura and I send our best wishes for a memorable event.

FROM THE GOVERNOR...



Dear Friends,

I send greetings to those gathered for the 2005 Fiscoff National Chamber Music Competition. I am delighted that you are here to participate in an excellent competitive program geared toward performance, music appreciation, and fellowship.

Music is an important part of our culture that brings joy to many. This competition provides a forum for musicians to showcase their talents, as well as promote music education and appreciation among today's youth.

Congratulations to each contestant who was selected to participate in this prestigious competition. This honor is certainly a testament to your hard work, artistry, and devotion to musical excellence.

Best wishes,

Mitchell E. Daniels, Jr.
Governor, State of Indiana



FROM CONGRESS...



Welcome to the Fiscoff National Chamber Music Competition. I am proud that you have come to our area to share your musical talents with us and the Nation. I hope that this experience will be one that you and your family will remember for the rest of your lives.

Since its start in 1973, Fiscoff has grown into a world class organization, and this has become an internationally respected competition. Over these next few days you will be competing against some of the brightest young musicians the world has to offer, and you should be proud to be one of them.

I hope you and your family will take time to enjoy the competition, and to enjoy staying in

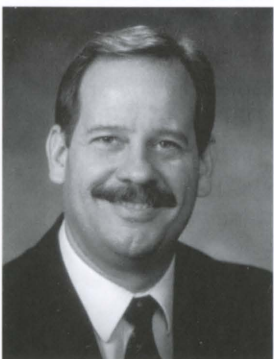
North Central Indiana. As the congressman from this district, I take pride in everything our community has to offer. We have wonderful museums, restaurants, historical sites, and other attractions that I am sure you will enjoy. Our best attraction, however, is our citizens, and as one, I would like to congratulate you on making it this far and wish you the best of luck in your future.

Yours Truly,

Chris Chocola
Member of Congress

Congress of the United States
House of Representatives

FROM THE MAYOR...



Welcome!

On behalf of the City of South Bend, I am pleased to offer a warm welcome to all attending the 2005 Fiscoff National Chamber Music Competition.

The Fiscoff National Chamber Music Competition, founded in 1973 by Joseph E. Fiscoff, has been attracting the finest young chamber musicians around the world to South Bend for the past thirty-two years.

This competition enjoys an international reputation as one of the most significant prizes for emerging chamber musicians. Congratulations on being selected to perform in this prestigious competition.

During your stay, I hope that you will have an opportunity to visit the many attractions and facilities that make South Bend unique. You will see that there is truly something for all ages and interests. Friendly people eager to help, combined with top notch facilities and attractions, will guarantee that your visit to our City will be memorable. On behalf of all of the citizens of South Bend, I say welcome, and I hope that you will visit again soon.

Sincerely,

Stephen J. Luecke
Mayor, City of South Bend



LETTER FROM THE PRESIDENT, DOUG MICK...



*Dear Fischhoff participants, friends,
and sponsors,*

Welcome to the 32nd Annual Fischhoff Competition. We are exceptionally excited about this year's venue. As you are probably aware, the Grand Prize winner will be determined in a final competition concert, which will be held in the fabulous Leighton Concert Hall. We believe this

will add excitement to our program, allow our young musicians to play in a world-class facility, and provide wonderful entertainment for our audience.

We appreciate your continued affiliation with the Fischhoff National Chamber Music Association. Not only are we providing an outstanding competition event, but we are offering very important educational outreach programs to community children. Many of our Fischhoff competitors act as ambassadors by holding sessions for the youth in this area. As role models, these musicians bring the finest performances to children who may otherwise have no exposure to this kind of quality music. Your support helps us continue to achieve these goals.

Again, welcome, thank you, and have a great performance weekend!

Doug Mick
President

FROM THE ARTISTIC DIRECTOR...



Joe Fischhoff was a dreamer, but I don't think he ever imagined this little idea he had with a few other local music educators would turn into this. It is hard for me to believe this is my 25th year as part of the Fischhoff. I strive to keep their original passion and goals in mind as the organization and the competition grow and change, taking an ever more significant place in

the chamber music world. I am personally so grateful to the incredible staff of the Fischhoff Office and the Board of Directors who help make it all possible. Our world is not always a beautiful and peaceful place. The art of chamber music can be a most powerful expression of all that is good about life, and yet has a tradition of being a medium for composers and performers to express their reactions to all aspects of our world. I also feel passionately that the arts are not a luxury, but instead a fundamental human need. Politicians and the budgets they control often ignore this reality. Please let your elected officials know that you believe in the public funding of the arts, and do all you can to personally support arts organizations important to you.

The Fischhoff is proud of its track record in encouraging, recognizing and rewarding excellence, which culminates each year in the awarding of the prizes. However, that is only one of the many goals of the Fischhoff Competition. On a broader scale, the Fischhoff National Chamber Music Association strives to encourage musicians of all ages and abilities to become involved in chamber music, to build local audiences, and to introduce school children to chamber music. Every effort is made so that

everyone who comes to South Bend has a positive experience. To that end, groups not only receive written comments from the jury, but also have the opportunity to meet and discuss their performance with each jury member. Junior Division ensembles not reaching the semifinals perform in master classes for jury members. We are once again thrilled to offer the prize winners numerous concerts and the opportunity for the Grand Prize ensemble to perform at the 2006 Emilia Romagna Festival in Italy. Our Junior Division winners will appear on the radio program "From The Top."

To the Performers: I urge all ensembles to take as much as you can from this weekend. Hopefully, you will be one of the prize winning ensembles. But, there is so much you can do to learn and improve while you are here. Do so by enjoying your opportunity to perform, listening to other ensembles in both the Junior and Senior Divisions to gain perspective on your own playing, and by getting to know other musicians who are here. Perhaps in the future you will be playing in a group with someone you first met here. Ultimately, you may or may not agree with the difficult decisions the jury must make. Remember that even in your own ensembles you undoubtedly do not always agree with your colleagues. Playing your best is the only thing you can control. Enjoying yourself and staying focused on the music is the best way to achieve that. Best of luck to all of you.

Thomas Rosenberg
Artistic Director

THE FISCHOFF STAFF



Ann Divine, Executive Director, began her work with the Fischhoff Association as Competition Manager in 1994. She was appointed Executive Director shortly after the completion of the 1994 Competition. Ms. Divine received her undergraduate degree in Music Education from Indiana University South Bend, and her

Master of Arts degree in Music History from Andrews University. She taught music history and applied voice at various area colleges and universities for more than twenty years. Ms. Divine is a member of the South Bend Chamber Singers, a 28-voice ensemble specializing in 20th Century music. She is on the Community Advisory Council of WNIT Public Television. Most recently, she was appointed Chair of the Arts Committee for the Salvation Army Ray & Joan Kroc Corps Community Center, St. Joseph County, Indiana.

Cellist **Thomas Rosenberg** has been Artistic Director of the Fischhoff National Chamber Music Competition since 1981. He is recipient of a 2004-5 McKnight Performing Artist Fellowship Award and was named the 2003-4 "Master Studio Teacher of the Year" by the Minnesota chapter of the American String Teachers Association. Mr. Rosenberg is coordinator of the string chamber music program, coaches numerous ensembles at the University of Minnesota School of Music, and is also on the faculties of Macalester and Carleton Colleges. He maintains a private teaching studio and is cellist of the Artaria String Quartet (www.artariaquartet.com) and Veblen Piano Trio. He received top chamber music prizes at the Munich (Germany), Portsmouth (England), and Chicago's "Discovery" Competitions and is a three-time Naumburg Award finalist. Previously, he was a founding member of the Chester String Quartet and was on the faculty of Indiana University South Bend from 1980-1998. With the Artaria and Chester Quartets, he has made numerous recordings, including "Quartets of Haydn and Shostakovich" and "An Artaria Winter Holiday" on the Aequibus label; Aaron Jay Kernis: "100 Greatest Dance Hits" on New Albion; and Mozart, "The Complete Flute Quartets" for Chesky Records.

Mr. Rosenberg is co-founder of Stringwood and WinterStrings chamber music programs in Lanesboro, MN. He has also served as Associate Director and on the teaching faculty of "The Quartet Program" at Bucknell University. He performs on a rare Cremonese cello made in 1794 by Lorenzo Storioni.

Originally from Buffalo, New York, he is a graduate of the Oberlin Conservatory and holds a Master's degree from the Eastman School of Music, where he was teaching assistant to Paul Katz and Laurence Lesser. Other major teachers include Richard Kapuscinski, Alan Harris, and Alta Mayer. His studies of the string quartet literature have been with many noted chamber musicians including members of the Budapest, Juilliard, Cleveland, Guarneri, and Tokyo Quartets.

Amanda VanHaute, Competition Assistant, is a 2001 graduate of Valparaiso University with a degree in Music Business. Ms. VanHaute has been with Fischhoff since the 2000 competition. A violinist and violist, she is a member of the Chiaroscuro String Quartet. Currently, she is the Retail Showroom Manager of Shar Products Company in Ann Arbor, Michigan and also works as a freelance musician.



Miki Strabley joined Fischhoff as Competition and Program Manager in August 2000.

She received her Bachelor of Arts degrees in English Literature and Political Science at Saint Mary's College in Notre Dame, Indiana. In 2001, she completed her Master of Science in Education. Miki is certified to teach secondary English, English as a Second Language and government. She is currently pursuing her Master of Science in Administration through the University of Notre Dame and is scheduled to graduate in May 2006. Outside interests include volunteering at the Northeast Neighborhood Community Center and playing trumpet as a member of the University Band of Notre Dame.



Pam O'Rourke joined Fischhoff as Administrative Assistant in July 2004. Long-time friend and volunteer of Fischhoff, Pam has been Community Relations Coordinator at Little Professor and Borders bookstores for 11 years and been active in theater, music and art. She attended Eastern Montana College and has three daughters. Outside interests include hiking, gardening, and reading.



Hannah Kim has many years of accounting and finance experience with the Westpac Banking Corporation, Australia's largest bank. Born in South Korea, she graduated from Hankuk University of Foreign Studies. She received her MS in Administration in 2004 from the University of Notre Dame. She is a CPA and is currently pursuing a MS in Accounting at Indiana University South Bend, and expects to graduate this summer. In college, she was a member of the classical music club as well as a long-serving member of the church choir.



Tessa Bysong joined the staff of Fischhoff as Competition and Marketing Assistant in August of 2002. She is a third year student at the University of Notre Dame, pursuing Business Management and Political Science degrees. Tessa heads consulting projects for the Student International Business Council and enjoys playing flute, piccolo, and piano.



Ryan Butler, IT Specialist, joined Fischhoff in September of 2004. He is from Eau Claire, Wisconsin, and is a third year student at the University of Notre Dame, pursuing a degree in Computer Science. Ryan is treasurer of the Notre Dame Ultimate Frisbee Club, as well as webmaster of the Notre Dame Linux Users Group. He enjoys rock climbing and backpacking in his spare time and played violin in a former life.



COMPETITION SCHEDULE OF EVENTS

FRIDAY MAY 6, 2005

Junior Quarterfinal

Leighton Concert Hall

DeBartolo Performing Arts Center

Repertoire for these groups begins on page 31.

No Tickets Required.

Morning

- 9:20 Etoile Trio
- 9:40 Fulcrum Trio
- 10:00 MMMM Good
- 10:20 Trio B-natural
- 10:40 Avante Quartet

Break

- 11:10 Cremona Ensemble
- 11:30 BAM Quartet
- 11:50 Trio Riendo

Afternoon

- 12:10 Washington String Quartet
- 12:30 Medianoche Quartet

Lunch Break

- 1:50 MYAPE Quintet
- 2:10 Oberon Trio
- 2:30 Apollo Piano Trio
- 2:50 opus.
- 3:10 Cerberus

Break

- 3:40 Green Lake Trio
- 4:00 Tűzforró
- 4:20 Rembrandt Trio
- 4:40 Trio Con Fuoco
- 5:00 Wind & Rein
Woodwind Quintet

Break

- 5:30 AYM Piano Trio
- 5:50 Alisier Trio
- 6:10 Saint Paul String Quartet
- 6:30 Three Strings and A Piano
- 6:50 Eleve Arte String Quartet
- 7:10 Animato Trio

Senior Wind Semifinal

Decio Mainstage Theatre

DeBartolo Performing Arts Center

Repertoire for these groups begins on page 39.

No Tickets Required.

Morning

- 9:30 Osomo Quartet
- 10:00 Sonare Wind Trio
- 10:30 Arizona State University
Saxophone Quartet

Break

- 11:15 Infinity Saxophone Quartet
- 11:45 Lago

Afternoon

- 12:15 Twelve-Ten Saxophone
Quartet

Lunch Break

- 2:00 Chicago Trombone Quartet
- 2:30 Blackout Saxophone Quartet
- 3:00 The Cleveland Institute
of Music Wind Quintet

Break

- 3:45 Blue Square Saxophone
Quartet
- 4:15 Cayuga Saxophone Quartet
- 4:45 The Red Lion Brass

Senior String Semifinal

Washington Hall

Repertoire for these groups begins on page 45.

No Tickets Required.

Morning

- 9:30 Abraxas Quartet
- 10:00 Auberon Trio
- 10:30 Alianza String Quartet

Break

- 11:15 Ambrosian Trio
- 11:45 Kashii String Quartet

Afternoon

- 12:15 The Cape Cod Experiment

Lunch Break

- 2:00 Hyperion String Quartet
- 2:30 Harding Trio
- 3:00 Delorean String Quartet

Break

- 3:45 The Lloyd Carr-Harris
String Quartet
- 4:15 Eero Trio



SATURDAY MAY 7, 2005

Senior Wind Semifinal

Decio Mainstage Theatre
DeBartolo Performing Arts Center
Repertoire for these groups begins on page 42.
No Tickets Required.

Morning

9:30 The Four Hornsmen
of the Apocalypse
10:00 Love for Three Oranges Trio
10:30 Intrada Winds
11:00 Citizen Quartet

Senior String Semifinal

Washington Hall
Repertoire for these groups begins on page 50.
No Tickets Required.

Morning

9:30 Vinca String Quartet
10:00 Aria Quartet
10:30 Jasper Quartet
11:00 Parker String Quartet

Junior Quarterfinal Meeting

Leighton Concert Hall,
DeBartolo Performing Arts Center

Morning

8:30 a.m.

Junior Quarterfinal Masterclasses

Assigned rooms to be announced.

Morning

9:00 a.m. to 11:00 a.m.

Junior Semifinal

Leighton Concert Hall,
DeBartolo Performing Arts Center
No Tickets Required.

Afternoon

1:00 TBA*
1:20
1:40
2:00
Break
2:30
2:50
3:10
3:30
Break
4:00
4:20
4:40
5:00

Participants' Dinner

South Dining Hall,
University of Notre Dame

Evening

7:00 p.m. **Reservations required**
(limited tickets may be available at
the merchandise sales table for \$18)

SUNDAY MAY 8, 2005

Tickets Required. Visit the box office or call 574-631-2800.

Senior Final

Leighton Concert Hall
DeBartolo Performing Arts Center

Morning

11:30 a.m. to 2:45 p.m.

Junior Final

Leighton Concert Hall
DeBartolo Performing Arts Center

Afternoon

3:00 p.m. to 4:00 p.m.

Awards Ceremony

Leighton Concert Hall
DeBartolo Performing Arts Center

Afternoon

4:30 p.m.

Grand Prize Playoff Concert

Leighton Concert Hall
DeBartolo Performing Arts Center
Tickets Required. (574-631-2800)

Evening

7:30 p.m. to 9:00 p.m.

Gala Reception with the Artists

Upper lobby,
DeBartolo Performing Arts Center
Tickets Required. (574-631-2800)

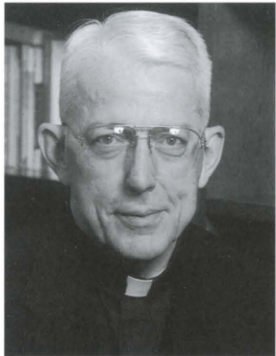
Evening

9:00 p.m. to 10:00 p.m.

* Twelve quarterfinalist ensembles will advance to the semifinal round on Saturday. Advancing ensembles are announced on Saturday morning at the quarterfinalist meeting.



WELCOME TO NOTRE DAME!



Dear Fischhoff Competition Participants:

Welcome to the campus of the University of Notre Dame. We are proud to host the annual Fischhoff National Chamber Music Competition again this year.

You will be joining the ranks of over 4,000 young people from all walks of life who have participated in the Fischhoff Competition since its founding in 1973. Fischhoff serves in helping to preserve the chamber music culture by providing the finest chamber music ensembles, including those attending major conservatories and schools of music.

I would like to extend my congratulations to you upon the great honor of being selected to participate in this competition sponsored by such a fine organization. The Fischhoff Competition, now celebrating its 32nd anniversary, is not only a great benefit to the community, but also to the State of Indiana and the nation.

All best wishes.

Cordially,

(Rev.) Edward A. Malloy, C.S.C.
President, The University of Notre Dame

“For he today that sheds his blood
with me shall be my brother.”

HENRY

DIRECTED BY WILLIAM BROWN

PRODUCED BY PAUL RATHBURN

With heroic battles,
inspirational speeches and
one of the most astounding
military victories ever, Henry V
celebrates the coming of age of
a warrior king.

Summer
Shakespeare
university of notre dame

August 10 - 28

Marie P. DeBartolo Performing Arts Center – University of Notre Dame

For ticket information and
reservations, call 574-631-2800.
Or visit shakespeare.nd.edu



Facilities

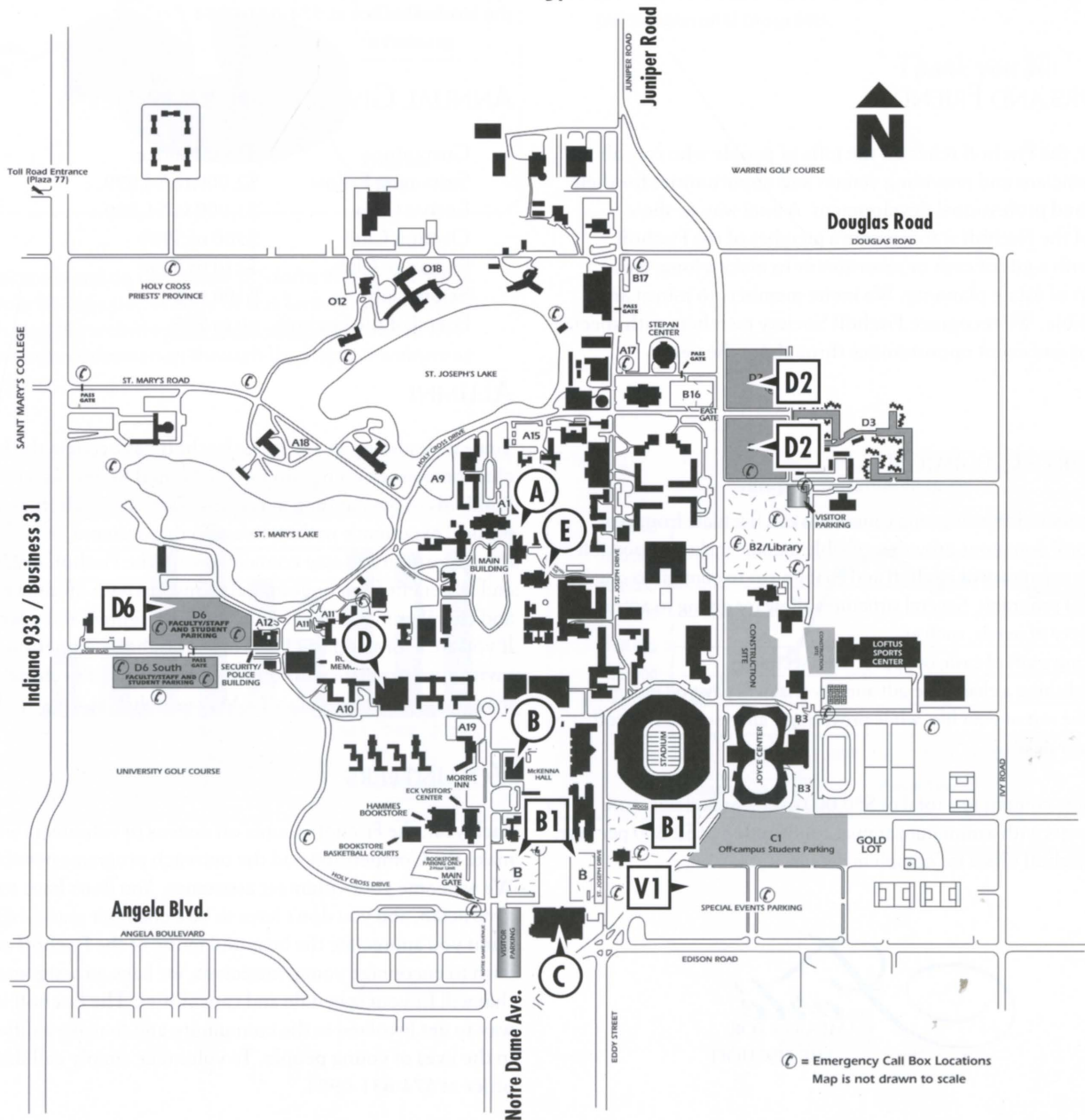
- A** Washington Hall
(Senior String Semifinals)
- B** McKenna Hall/Center
for Continuing Education
(registration, merchandise,
photos)
- C** DeBartolo Performing
Arts Center (Senior Wind
Semifinals, Junior Division,
Sunday Finals)
- D** South Dining Hall
(Participants' Dinner)
- E** LaFortune Student Center
(various eateries)

Parking

- B1** Parking for Performing Arts
V1 Center, McKenna Hall,
Shuttle to Washington Hall
- D2** Additional Parking
for Washington Hall
(no shuttle service from this lot)
- D6** Parking for South Dining Hall
B1

Please Note:

A free shuttle bus for Fischoff competitors, volunteers and audience members will run continuously from the front entrance of the Performing Arts Center to Washington Hall on Friday and Saturday. Park in B1 lots to access this service.





THE FISCHOFF NATIONAL CHAMBER MUSIC ASSOCIATION

FISCHOFF'S MISSION

The Fischhoff National Chamber Music Association promotes and encourages the development, awareness and appreciation of chamber music and its role in our culture through innovative educational programs, chamber music performances and sponsorship of the Fischhoff National Chamber Music Competition.

DONORS AND FRIENDS

Each year, the Fischhoff relies on the gifts of people who care about young musicians and providing venues and opportunities for their personal and professional development. A vital way to show support of the Fischhoff is to become a member of the Fischhoff Society with a gift of cash or securities or to make a long-term gift as part of estate planning. We invite members to join at any level possible. We recognize Fischhoff Society members with special invitations and event opportunities throughout the year.

THE FORTÉ CAMPAIGN

While grants and annual giving campaigns can fluctuate from year to year, Forté donations provide a reliable income making it possible to plan the expansion of Fischhoff and enabling us to commit to ongoing educational programs. Several structures allow for giving to accommodate a variety of needs, such as:

- making a gift of cash, or appreciated securities;
- establishing a charitable gift annuity that will pay you income for the rest of your life, while providing a lump sum to Fischhoff at your death.

Forté donors commit to a total of \$50,000 over a period not more than ten years with a minimum annual contribution of \$2,500 per year. Call the Fischhoff office for complete details.



FISCHOFF SOCIETY

The Fischhoff Society is an organized community of donors, friends, alumni and volunteers committed to ensuring the strength of the Fischhoff Competition, the advancement of its educational outreach programs and the camaraderie generated by beautiful chamber music.

If you would like to join the Fischhoff Society and receive our *High Notes* newsletter, you can make your gift by contacting the Fischhoff office at 574-631-0984.

ANNUAL GIVING OPPORTUNITIES

Guarantor:	\$5,000 and up
Sustaining Fellow:	\$2,000 to \$4,999
Encore Club:	\$1,000 to \$1,999
Ovation Club:	\$500 to \$999
Signature Club:	\$250 to \$499
Salon Club:	\$100 to \$249
Friend of the Fischhoff:	up to \$99

ALUMNI

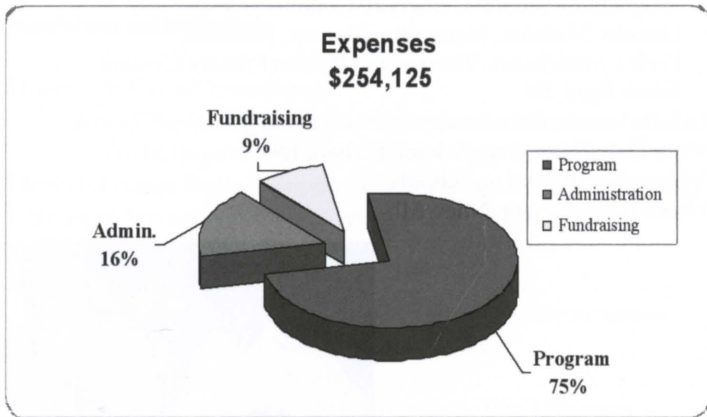
Since its founding in 1973, the Fischhoff has become the largest chamber music competition in the United States. As a result, hundreds of outstanding musicians claim the Fischhoff as a defining musical experience in their lives. To these alumni, we wish to offer the opportunity to stay connected with the Fischhoff organization and to benefit from ongoing relationships with lifetime friends and chamber musicians, venue hosts, presenters and educators. If you are a former participant in the Fischhoff competition, we invite you to update your profile on the Fischhoff website so we may stay connected with you. Visit us online at www.fischhoff.org.

VOLUNTEERS

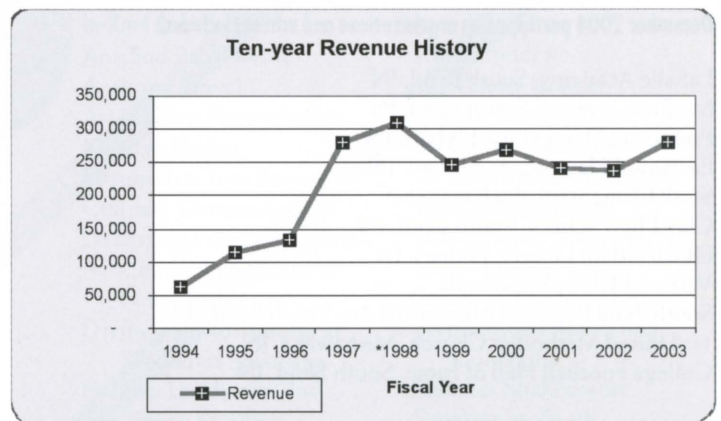
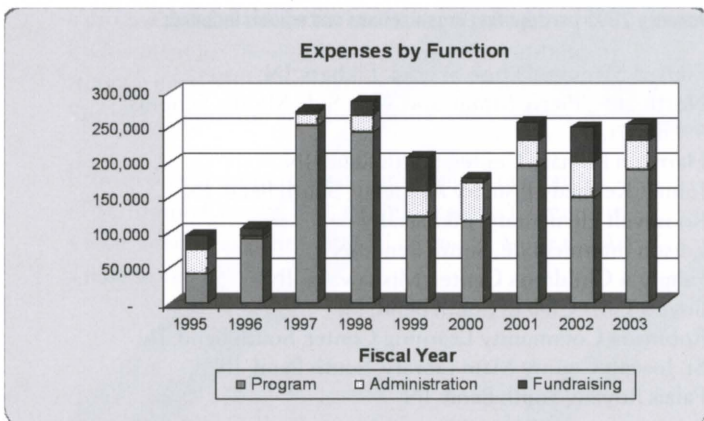
Each year, the Fischhoff counts on dozens of volunteers who help make the Competition and the outreach programs possible. We welcome your volunteer assistance. You don't have to be a musician, and you don't have to be a chamber music expert. But if you appreciate the beautiful music of the Fischhoff and wish to encourage young musicians, we have an assignment that will fit your schedule and capabilities. The Fischhoff is a great way to get involved in the community and to make a difference in the lives of young people. To volunteer, simply call the Fischhoff office at 574-631-0984.

FINANCIAL RETROSPECTIVE

FISCAL YEAR 2003
(July 03–June 04)



These figures are based on the annual IRS form 990 for the fiscal year 2003 (July 03-June 04). A copy of this form is available to the public by visiting the website www.guidestar.com. You can also access organization information through the Fischhoff website at www.fischhoff.org.



*Endowment established in 1998

THANKS TO YOU,
FISCHOFF IS STRONG

The Fischhoff National Board of Directors wishes to express thanks to all our donors who have made this year a strong one. We are indebted to your generosity and encourage your ongoing support to ensure the greatness of Fischhoff.

Your gifts encourage us to uphold our mission and move forward with our long-range plans for the Competition and our educational programs.

Thank you all!

FISCHOFF'S ARTS-IN-EDUCATION RESIDENCY

Fischhoff's Arts-in-Education Residency is the only one of its kind in Northern Indiana dedicated to providing unique and interactive programs that target underserved children and at-risk youth. The residency also focuses on early arts intervention programs.

In 2004-05 Fischhoff presented its residency programs to more than 7,500 children and youth during three separate weeks of outreach programming. Corky Siegel's Chamber Blues Trio traveled from Chicago to present nine programs in October. A highlight of the week included a reenactment of the children's book *The Jazz Fly* for more than 900 Title I second graders from the South Bend Community School Corporation. Imani Winds, now Resident Musicians at Lincoln Center in New York, performed 12 programs in December including their reenactment of *When it Starts to Snow*. The Marian Anderson String Quartet, the first African American ensemble in history to win a classical music competition, performed twelve inspirational and educational programs in January. They are currently the Ensemble in Residence at Texas A&M. An evening at the Robinson Community Learning Center was a particular success, with a musical reenactment of *The Bat Boy & His Violin*.

Fischhoff has enjoyed the enthusiastic support of countless community organizations, agencies, foundations and schools since the Arts-in-Education Residency's inauguration in 1995.

December 2004 participating organizations and schools included:

LaSalle Academy, South Bend, IN
 Madison Primary, South Bend, IN
 Pinewood Elementary, Elkhart, IN
 Eastwood Elementary, Elkhart, IN
 Stark Elementary, Buchanan, MI
 Clay High School, South Bend, IN
 Elkhart Main Library, Elkhart, IN
 Various Elkhart Preschools
 South Bend Regional Museum of Art, South Bend, IN
 1st United Methodist Church, Mishawaka, IN
 College Football Hall of Fame, South Bend, IN



Imani Winds

October 2004 participating organizations and schools included:

The South Bend Community School Corporation's Title I Program for Second Graders at Coquillard, Harrison, Lincoln, Madison, Marquette, Monroe, Muessell, Perley, Studebaker, Warren, and Wilson Primary Centers, South Bend, IN
 LaSalle Intermediate Academy, South Bend, IN
 Mary Daly Elementary School, Elkhart, IN
 Various South Bend preschools
 Howard Elementary, Niles, MI



Corky Siegel's Chamber Blues Trio

January 2005 participating organizations and schools included:

Elkhart Memorial High School, Elkhart, IN
 North Side, Pierre Moran and West Side Middle Schools, Elkhart, IN
 Harrison Primary Center, South Bend, IN
 John F. Kennedy Primary Academy, South Bend, IN
 Roosevelt Elementary, Elkhart, IN
 Edison Intermediate, South Bend, IN
 Family & Children's Center, Mishawaka, IN
 Boys & Girls Club of South Bend, IN
 Robinson Community Learning Center, South Bend, IN
 St. Joseph County Main Library, South Bend, IN
 Palais Royale, South Bend, IN



Marian Anderson String Quartet



ARTS-IN-EDUCATION RESIDENCY UNDERWRITERS

Foundations and Institutions

- Florence V. Carroll Foundation
 - general Residency support as well as research support for Fischhoff's permanent Arts-in-Education Residency
- Henkels Lecture Series, Institute for Scholarship in the Liberal Arts, College of Arts and Letters, University of Notre Dame
 - direct support for the Marian Anderson Quartet
- Genesis Program & the City of Elkhart
 - direct support for Elkhart school and community programs
- 2005 Leighton Award for Nonprofit Excellence
 - Special Recognition Award
- South Bend Community School Corporation, Title I Program
 - direct support for Corky Siegel's Chamber Blues Trio
- Frederick S. Upton Foundation
 - direct support for Michigan school and community programs

This project is supported in part by an award from the National Endowment for the Arts.

This presentation is supported by the Heartland Arts Fund a program of Arts Midwest funded by the National Endowment for the Arts with additional contributions from General Mills Foundation, Land O'Lakes Foundation, Spring Corporation and the Indiana Arts Commission.

Provided with support from Community Foundation of St. Joseph County, Inc., the Indiana Arts Commission, a state agency, and the National Endowment for the Arts, a federal agency.

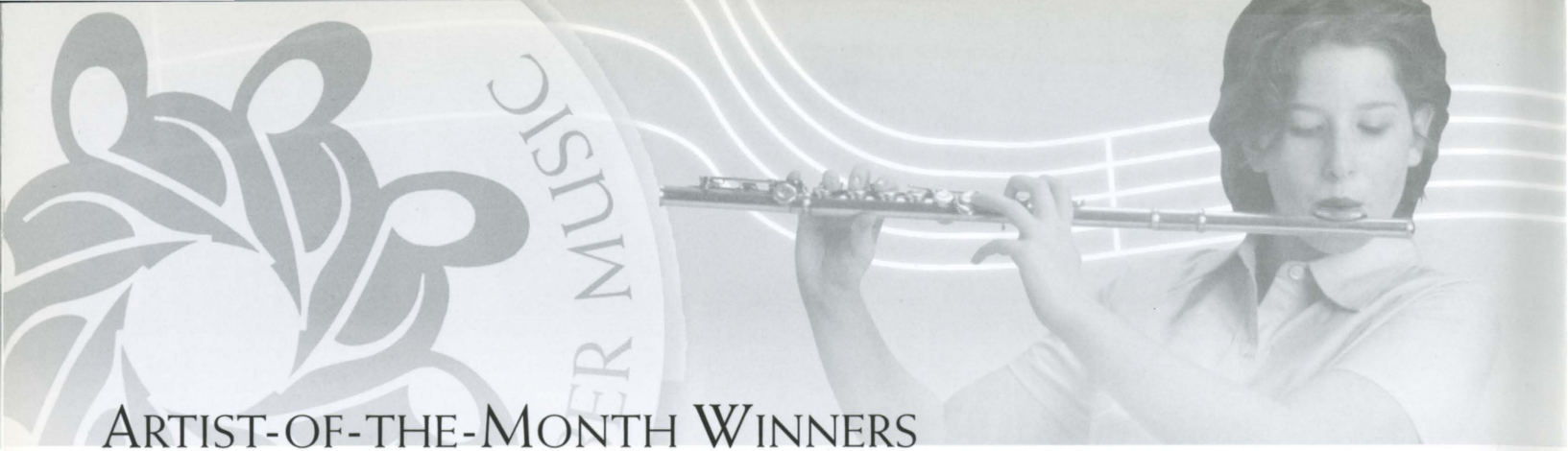
Corporate and Private Support

- AM General
- Baker & Daniels
- Barbara Shields Byrum
- Crowe Chizek
- Fifth Third Bank
- Gibson Insurance Group & the Hartford
- Graffis Furniture
- Jones Obenchain, LLP
- KeyBank
- Merrill Lynch
- Doug & Karen Mick
- National City Bank
- Stanz Foodservice, Inc.
- The Woodwind & Brasswind
- WVPE-AM, Media Sponsor

In-Kind Contributors

- Ann and Paul Divine
- Anthony Travel
- Art Hansen Photographic
- Kathryn Barbin
- Elizabeth & Tom Borger
- Culinary Connection
- DeBartolo Performing Arts Center, University of Notre Dame
- Divine-Johnson Group at Wachovia Securities
- Foegley Landscape, Inc.
- The Frame Factory
- Framed Custom Picture Framing
- Graffis Furniture
- Images Jewelers
- Kurt Koerwitz
- Christopher & Valerie Kramer
- Doug & Karen Mick
- McCaffrey Lighting
- Mossberg & Company Inc.
- Persian Rug Gallery
- Emese Ronay Rivera
- Shirks Piano & Organ
- Sorin's at The Morris Inn
- Stephenson's Marketing Concepts
- Summer Shakespeare
- Superior Seafoods
- The Woodwind & Brasswind
- Victorian Pantry
- WVPE-FM Media Sponsor





ARTIST-OF-THE-MONTH WINNERS

The Artist-of-the-Month Program honors outstanding high school instrumentalists in both St. Joseph and Elkhart Counties and surrounding regions through featured articles in *The South Bend Tribune*, *The Elkhart Truth*, and *The Goshen News*.

The Fiscoff Association wishes to thank the Elnora Hartman Stickley Scholarship Fund for providing \$100 scholarships to each Artist of the Month winner during the 2004-05 season.

Special thanks go to our committees who select the monthly winners.

St. Joseph County Committee Members

Travis Budd
 Carol Kapson
 Marianne Peters
 Nancy Menk

Elkhart County Committee Members

Louis Davidson
 Matthew Hill
 Kathleen Hollenberg
 Karen Mick

Congratulations to the following winners:

St. Joseph County and Region

Month	Name	Instrument	School
OCTOBER	Diana Barbour	<i>piano, trumpet</i>	Clay High School
JANUARY	Laura Orsman	<i>piano</i>	Penn High School
FEBRUARY	Keith Ziolkowski	<i>bass, piano, trumpet</i>	Washington High School
MARCH	Catherine Perrin	<i>piano, English horn, oboe</i>	St. Joseph High School
APRIL	Courtney Helman	<i>piano</i>	Penn High School
MAY	Abigail Hoffman	<i>cello</i>	Penn High School

Elkhart County and Region

OCTOBER	Alice Corey	<i>cello</i>	Elkhart Central High School
NOVEMBER	Azusa Chapman	<i>violin</i>	Goshen High School
JANUARY	Kate Baraghahn	<i>clarinet, saxophone</i>	Concord High School
FEBRUARY	Matt Tomkins	<i>saxophone, guitar</i>	Concord High School
MARCH	Amanda Bechtel	<i>flute</i>	Concord High School
APRIL	Jason York	<i>trombone</i>	Jimtown High School
MAY	Jessica Rose Jaeger	<i>piano, violin</i>	Elkhart Christian Academy

CHAMBER MUSIC MENTORING PROJECT

Fischhoff's Mentoring Project provides an opportunity for regional middle and high school chamber ensembles to receive consistent professional coaching at no charge. Fischhoff is delighted to be underwriting coaching fees for five ensembles during the 2004-05 school year. In addition to coaching sessions, ensembles are invited to participate in master classes and a public recital. Ensembles are also encouraged to perform at public venues as community service.

Fischhoff wishes to thank the Elnora Hartman Stickley Scholarship Fund for graciously underwriting the Mentoring Project.

Ensembles & Coaches



DISCOVERY STRING QUARTET

Discovery Middle School, Granger, IN

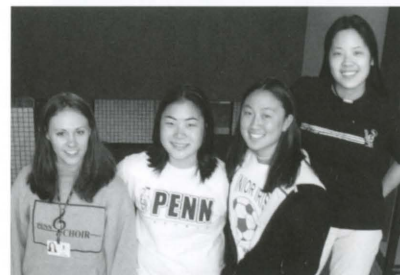
Brian Harper, viola
Daniel Howard, violin
Jeffrey Wei, violin
Christine Wu, cello
Coach: Judith Weaver



FOUR STAR QUARTET

*Elkhart Central High School, Elkhart, IN,
Trinity School, Saint Joseph's High School,
South Bend, IN*

Alice Corey, cello
Elizabeth Grondin, violin
Andika Suhardjo, viola
Inez Suhardjo, violin
Coach: David Machavariani



KINGSMEN STRING QUARTET

Penn High School, Mishawaka, IN

Helen Han, viola
Abby Huffman, cello
Angela Shan, violin
Elizabeth Traxler, violin
Coach: Carol Bullock Russell
Orchestra Director: Lavon Oke



PENN STRING QUARTET

Penn High School, Mishawaka, IN

Ali Denotter, viola
John Green, violin
Maiko Heflick, violin
Annsa Huang, cello
Coach: Carol Bullock Russell
Orchestra Director: Lavon Oke



TRILLIUM

*Edwardsburg High School, MI,
Marian High School, Mishawaka, IN,
& Homeschooled, South Bend, IN*

Korynne Bolt, cello
Meghan Garcia, piano
Suzanne Pearman, violin
Coach: Karen Buranskas



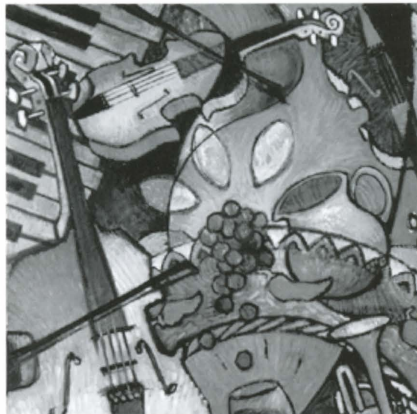
Four Star Quartet performs for President George W. Bush's appearance at the Joyce Center, University of Notre Dame.



Master class with Marian Anderson String Quartet.



FISCHOFF'S CULINARY FEAST VI



Artwork by Kathryn Barbin

CALIENTE!

This year's Culinary Feast, "CALIENTE!," was held at the beautifully restored Palais Royale Ballroom in downtown South Bend. The evening honored the spirit of CALIENTE! — hot, spicy, savory and sweet. Over 250 guests enjoyed gourmet selections created by chefs of the American Culinary Federation. The evening also included a performance by the Marian Anderson String Quartet (Fischhoff Arts-in-Education Residency Artists), a limited silent and live auction and dancing to the salsa beat of the pop/jazz ensemble, *Pieces of Dreams*. Proceeds from the evening were used to support Fischhoff's educational programs and to provide scholarship money for the apprentice chefs of the South Bend Chapter of the American Culinary Federation.

Kathryn Barbin, a regional artist, created and donated her oil painting "CALIENTE!" to the auction. Framed Custom Picture Framing donated an elaborate frame to complement the art.

Fischhoff wishes to thank Elizabeth Naquin Borger and Tom Borger for purchasing the painting. The artwork will be used on the 2006 Fischhoff National Chamber Music Competition poster.

Underwriters

Corporate and Individual Sponsors:

AM General
Baker & Daniels
Barbara Shields Byrum
Crowe Chizek
Fifth Third Bank
Florence V. Carroll Foundation
Frederick S. Upton Foundation
Gibson Insurance Group and The Hartford
Graffis Furniture
Jones Obenchain, LLP
KeyBank
Doug & Karen Mick
Merrill Lynch
National City Bank
Stanz Foodservice, Inc.
The Woodwind & Brasswind

In-kind Contributions

Ann and Paul Divine
Anthony Travel
Art Hansen Photographic
Kathryn Barbin
Elizabeth & Tom Borger
The Culinary Connection
Marie P. DeBartolo Performing Arts Center,
University of Notre Dame
Divine-Johnson Group
at Wachovia Securities
The Frame Factory
Framed Custom Picture Framing
Graffis Furniture
Images Jewelers
Kurt Koerwitz
Christopher & Valerie Kramer
Doug & Karen Mick
McCaffrey Lighting

Mossberg & Company
Persian Rug Gallery
Emese Ronay Rivera
Shirk's Piano & Organ
Sorin's at The Morris Inn
Stanz Foodservice, Inc.
Stephenson's Marketing Concepts
Summer Shakespeare
Superior Seafoods
Thorton Gardens
Victorian Pantry
The Woodwind & Brasswind
WVPE-FM Media Sponsor



Event Planning

Co-chairs: Kitty Rose and Elizabeth Naquin Borger

Committee:

Catherine Wells-Bentz
 Ryan Butler
 Tessa Bysong
 Ann Divine
 Carolyn Garber
 Shirley Geraghty
 Kathy Haney
 Christopher & Valerie Kramer
 Pam O'Rourke
 Emese Ronay Rivera
 Dean Porter

Patrons

Frederick Ettl
 David & Tori Beatty
 1st Source Private Banking

The Chefs and Their CALIENTE! Creations

Hors D'oeuvres: Coconut Shrimp & Tapas
 Chef: Kip Peters, Century Center's Centerplate Catering

Appetizer: Seared Scallops
 Chef: Andrew W. Thistlethwaite, Elcona Country Club
 Chef: Scott Erwin, Martins Supermarkets

Salad: Ecuadorian Style Composed Salad
 Chef: Ken Acosta, Morris Park Country Club

Entrée: Diablo Chicken with Cilantro Cream Sauce paired with Bacalao Tilapia
 Chef: Kip Peters, Century Center's Centerplate Catering

Dessert: Flaming Coffee and Flambe'
 Chef: Tim Carrigan, Ivy Tech Culinary School

Junior Hosts / Hostesses:

Marian High School Junior Citizens Club,
 Riley High School: Ashley Kramer

Fischhoff's Mentoring Project Ensembles:

Four Star Quartet – Elizabeth Grondin, violin; Inez Suhardjo, violin; Andika Suharadjo, viola; Alice Corey, cello
Trillium (piano trio) – Meghan Garcia, piano; Suzanne Pearman, violin; Korynne Bolt, cello



Kitty Rose and Ed Everett enjoy Caliente



Flaming Desserts and Coffees



Fischhoff's Board President Doug Mick greets Deidra Lawrence of the Marian Anderson String Quartet.



PEER AMBASSADORS FOR CHAMBER MUSIC

The Peer Ambassadors for Chamber Music (PACM) Program takes place on Friday of the Competition. It involves our youngest performers—ensembles from the Junior Division. This year, our carefully chosen junior ensembles will be sent into area classrooms to present informal performance-workshops for second and third graders. The Program's purpose is to present to little learners a friendly and "real" introduction to chamber music. Since Fischhoff juniors are also in school, they make perfect role models for elementary school children who look up to and identify with older students. The performance level of Fischhoff junior ensembles creates an excitement that is a powerful mentoring tool in persuading young children to consider joining their own school or community band and orchestra programs.

We wish to acknowledge and thank the following junior ensembles:

Cremona Ensemble, St. Louis, MO
Trio B-natural, Boston, MA
Apollo Piano Trio, Philadelphia, PA
AYM Piano Trio, Highwood, IL
Saint Paul Quartet, St. Paul, MN
Eleve Arte, Madison, WI
Cerberus, Chicago, IL

Schools receiving PACM programs:

Nuner Primary School, South Bend, IN
Hawthorne Elementary, Elkhart, IN
Woodland Elementary, Elkhart, IN
St. Mary's Elementary School, Niles, MI
Oaklawn Elementary, Niles, MI
Ottawa Elementary School, Buchanan, MI
Menominee Elementary School, Plymouth, IN

Do you want to take your music to the next level?

Get the Interlochen Edge

**Interlochen teaches you the skills to take you
where you want to go.**

Make the connections now that will help you throughout your artistic life. The success of our alumni – violinists Ani and Ida Kavafian, clarinetist David Shifrin, violist James Dunham, trumpeter Kevin Cobb – speaks for itself.

"Interlochen students are so much further along because they've already been exposed to what it means to be excellent..."

David Stull, Dean, Oberlin Conservatory

**Two pre-professional
programs available:**

Interlochen Arts Academy
Interlochen Arts Camp

www.interlochen.org

800.681.5912

INTERLOCHEN
Center for the Arts

PO Box 199, Interlochen, MI 49643





SOIREES

Soirees are intimate musical gatherings in the form of an evening party or reception in private homes. More than 30 years have passed since Joseph Fischhoff and his musician friends began inviting neighbors to their homes to enjoy chamber music. Since then, soirees have become a popular springtime tradition in Michiana. Guests are able to experience chamber music as it was intended to be heard—in relatively small spaces for small audiences. That tradition has expanded to include soirees in corporate settings, schools, and retail settings—anywhere people gather for social purposes.

The tremendous generosity of our soiree hosts, hostesses and businesses enables the Fischhoff National Chamber Music Association to present some of the talented ensembles that gather in South Bend for the Competition. Soirees are important to Fischhoff not only because they provide a wonderful opportunity for the audience, but also because they help raise funds to support the Fischhoff Competition.

We would like to acknowledge the tremendous contribution of the ensembles who perform at the soirees and to extend our thanks to those ensembles who offered their services, but for whom we had no soiree host.

2005 Soiree Hosts and Hostesses

Claudia Manning, South Bend, IN
Graffis Furniture Store, South Bend, IN
The Stanley Clark School, South Bend, IN
Trinity School at Greenlawn, South Bend, IN
Dr. Tim and Marianne Peters, Plymouth, IN
Dr. David & Mitzi Sabato, South Bend, IN
Dr. Paul & Dr. Diane Herman, South Bend, IN
Kitty Rose & Ed Everett, Edwardsburg, MI
Dogwood Fine Arts Festival, Inc., Dowagiac, MI

This year's participating ensembles include:

Ambrosian Trio, New York, NY
Kashii String Quartet, Cleveland Institute of Music, Cleveland, OH
Harding Trio, Cleveland Institute of Music, Cleveland, OH
Parker String Quartet, New England Conservatory of Music, Boston, MA
Lloyd-Carr Harris String Quartet, McGill University, Montreal, Quebec, Canada
Vinca String Quartet, University of Colorado, Boulder
Cape Cod Experiment, Eastman School of Music, Rochester, NY
Citizen Quartet, Bowling Green State University, Bowling Green, OH
Sonare Wind Trio, Middleboro, MA

Lunchtime Concerts were provided by the following:

Love for Three Oranges Trio, Rochester, NY
Medianoche Quartet, Annandale, VA
BAM Quartet, Highwood, IL
Wind & Rein Woodwind Quintet, Highwood, IL
Trio con Fuoco, Naperville, IL
Intrada Winds, New Haven, CT
Vinca String Quartet, Boulder, CO

Barnes & Noble Bookstore Players:

(Saturday, May 7, 10:00 am - 11:00 pm)

Love for Three Oranges Trio, Rochester, NY
Intrada Winds, New Haven, Ct
Cape Cod Experiment, Rochester, NY
Apollo Piano Trio, Philadelphia, PA
Etoile Trio, St. Louis, MO
Cremona Ensemble, St. Louis, MO
Oberon Trio, St. Louis, MO
Cerberus, Chicago, IL



WINNER'S TOUR

THE 2004-2005 GRAND PRIZE WINNER'S TOUR

Each fall, the Grand Prize-winning ensemble from the Competition is presented on the Joseph E. Fischhoff Memorial Winner's Tour, playing in formal venues as well as community and educational settings. This past year, Jupiter String Quartet performed for the following:

October 14-23, 2004

- Culver High School, masterclass/demonstration, Culver, IN
- Encore Performing Arts, soiree, Plymouth, IN
- Goshen College, masterclass and concert, Goshen, IN
- Mostly Music at Northeastern Illinois University, masterclass, Chicago, IL
- Music in the Loft, concert, Chicago, IL
- Norton Building Concert Series, concert, Lockport, IL
- University of Notre Dame, high school ensemble coaching, IN
- Wabash College, concert, Crawfordsville, IN
- WFMT, live studio broadcast, Chicago, IL

January 22-24, 2005

- Pease Concert Series, outreach and concert, Eastern Michigan University, Ypsilanti, MI

Italy

Summer 2005: Emilia Romagna Festival

Emilia Romagna Festival

Fischhoff and the Emilia Romagna Festival have formed a collaboration that makes it possible for the Competition's Grand Prize Winner to participate in the 2006 summer music festival. Concerts are presented throughout the Emilia Romagna region of Italy in unique venues such as historic buildings, great homes, churches and even courtyards. The tour provides wonderful opportunities, experiences and connections for these talented young chamber musicians.



Jupiter Quartet
2004 Fischhoff Grand Prize Winners

THE 2005-2006 GRAND PRIZE WINNER'S TOUR

October 14-22, & November 11-14, 2005

Illinois

- October 16: Norton Building Concert Series, concert, Lockport
- October 21: Music in the Loft, concert, Chicago

Indiana

- October 15, 17-18: regional concerts and educational programs
- October 18: Encore Performing Arts, soiree, Plymouth
- October 19: Wabash College, concert, Crawfordsville

Michigan

- October 20, Andrews University, concert, Berrien Springs
- November 12-14: Pease Concert Series, concert and outreach program, Eastern Michigan University, Ypsilanti

Italy

Summer 2006: Emilia Romagna Festival





THE 32ND ANNUAL COMPETITION

HOW THE JURY SELECTS THE WINNER

How does a juror make his or her selection of the "best" ensemble from all the competitors? It can be a Herculean task. The distinguished jurors of the 2005 Competition do have some formulas on which they can rely. However, their decisions are guided primarily by their own musical integrity and experience as performers and instructors. They listen for interpretation—tempi and dynamics; ensemble performance—balance within the ensemble, blend, and unity of the members; technical accuracy—rhythm and intonation; and overall performance—poise, artistic impression, and expression.

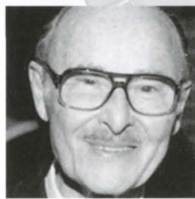
Jurors individually rank the ensembles in each division. These rankings are combined, then averaged for each ensemble to arrive at a group's composite ranking. Rankings are a good method for determining the prize winners, but the real value for these young musicians comes from the written comments of the jurors. The juror evaluations are distributed to all performing ensembles at the completion of the Competition. From these written comments, the musicians gain valuable and constructive feedback, which is intended to stimulate their growth as artists and ensembles.

Identifying conflict of interest issues is very important to the integrity of the competition. Conflicts of interest between jurors and ensembles or any individuals within an ensemble are carefully identified and handled appropriately.

HISTORY OF THE COMPETITION

South Bend is proud to be the home of one of the nation's premiere musical events, the renowned Fischhoff National Chamber Music Competition. Founded in 1973, by Joseph E. Fischhoff and members of the South Bend Chamber Music Society, this prestigious event was originally intended to encourage emerging instrumental chamber musicians and provide a national forum for their talents. In that first year, six ensembles participated.

Today, the original mission remains constant and has broadened to include Senior String and Wind Divisions as well as a Junior Division for musicians age 18 and under. This year, fifty-seven ensembles will be invited to perform. The scope of Fischhoff has also grown by utilizing the talents of these amazing young musicians through community outreach programs and by designing Arts-in-Education Residencies that bring Fischhoff alumni as well as other chamber music ensembles back to the community for outreach programs.



JOSEPH E. FISCHOFF
1907-1992

Joe Fischhoff loved music, especially chamber music. Born in Hungary in 1907, his family settled in South Bend where he graduated from South Bend High School in 1925. As a young man, he simultaneously attended Philadelphia's Wharton School of Business and the Curtis Institute of Music. In 1929, he graduated from Wharton with a degree in Economics while studying viola with Louis Bailley and chamber music at Curtis. When the first orchestra was started at Curtis, Joe was invited to audition by conductor Leopold Stokowski and played in the viola section.

While he did not professionally pursue music, he played chamber music in his home every week for as long as he could continue to play. In the furniture business by trade, Joe was a musician at heart and loved to encourage young people to continue the art of chamber music through the Fischhoff Competition.

As the competition grew, so did the temptation to become like all other competitions. He quietly insisted that this competition be different. Its roots were to be founded in education and mentoring. His goal became ours - to provide a positive and constructive experience for all musicians. Because of him, Fischhoff not only seeks out excellence, but has as its major goal the education of as many people as possible to be chamber musicians, to listen to chamber music, and most of all, to love chamber music.



2004 Winners

2005 COMPETITION STATISTICS

- Countries represented: 22
- States represented: 25
- Oldest member: 39
- Youngest: 10
- Junior Entries — Groups: 54; Individuals: 205
- Senior String Entries — Groups: 22; Individuals: 81
- Senior Wind Entries — Groups: 33; Individuals: 133

JUNIOR QUARTERFINAL JURORS

The Quarterfinal Round was introduced in 1996 to allow for increased applications to the Junior Division of the Fischhoff Competition. This Round provides an additional day of competition and master classes. The Quarterfinal Round offers a valuable educational component for our youngest participants. From this group, twelve ensembles will be selected to compete in the Junior Semifinal on Saturday. Master classes, conducted by the panel of Quarterfinal jurors, will be offered Saturday morning. Fischhoff is honored and pleased to welcome the following 2005 Quarterfinal jurors.



Paul Nitsch, pianist, is the Carolyn G. McMahon Professor of Music on the faculty of Queens University of Charlotte, North Carolina. He also serves as Artistic Director for the Friends of Music at Queens University of Charlotte and as Chairman of the Fine Arts Division and the Music Department. For twelve years,

Dr. Nitsch also served as Assistant Director, Pianist-in-Residence, and Pianist of the Garth Newel Piano Trio at the Garth Newel Music Center in Hot Springs, Virginia. He subsequently served for nine years as Artistic Director for the Fontana Concert Society in Kalamazoo, Michigan, where he earned an ASCAP award for "adventurous programming." He is particularly devoted to the study and performance of chamber music with piano. He has collaborated with many ensembles and chamber musicians in frequent performances of almost all of the standard piano chamber music literature during the last three decades, as well as many contemporary and commissioned works. His performances have been heard nationally on National Public Radio, as well as locally on WQXR in New York City, WCLV in Cleveland, and in Michigan, Virginia and North Carolina. Paul Nitsch earned Bachelor's and Master's degrees in Piano Performance at the Peabody Conservatory of Music in Baltimore, Maryland. His teachers were Walter Hautzig and Leon Fleisher. He was awarded two Fulbright Grants for study at the Hochschule für Musik und Darstellende Kunst in Vienna, Austria. He earned his Doctor of Musical Arts degree in Collaborative Piano at the Cleveland Institute of Music with pianist Anne Epperson.

2005 Junior Quarterfinal Benefactor

This program has been made possible through the generosity of Amateur Chamber Music Players of its ACMP Foundation, an organization that promotes chamber music activities for amateur musicians. Fischhoff is pleased to welcome Anthony L. Finley, Chairman of the ACMP Foundation Board of Directors.



Rhonda Rider, cellist, is a founding member of the Naumburg Award winning Lydian Quartet, with whom she played for over twenty years. She is currently a member of the celebrated piano trio, Triple Helix. An active touring artist, she has been heard at international festivals including Concerts Spirituel de Geneve, Septembre Musique de L'Orne, American

Academy in Rome, and Tanglewood. She has performed at the Kennedy Center, Lincoln Center, Wigmore Hall, Moscow Conservatory, Los Angeles County Museum of Art and the Library of Congress. As a soloist, Rider won New York's Concert Artists' Guild Award as well as an Aaron Copland Fund Grant. Dedicated to the performance of new music, Rider has premiered and recorded works by John Harbison, Lee Hyla, Steve Mackey, Bright Sheng and Elliot Carter. Her chamber music and solo recordings have been nominated for GRAMMY Awards and cited as "Critic's Choice" in both the New York Times and Boston Globe. She has served as a panelist for the National Endowment for the Arts, the American String Teachers Association and Chamber Music America. During the summer months, she has performed and taught at the Norfolk Festival, Tanglewood, Killington Music Festival, Music from Salem and the Token Creek Festival. Rider is the cello coach for the Asian Youth Symphony in Hong Kong and additionally holds a Cello Seminar dedicated to contemporary music in Salem, New York. Her teachers have included the renowned cellist Aldo Parisot, Zara Nelsova and Richard Kapuscinski. Rider is Coordinator of Chamber Music at the Boston Conservatory and on the cello faculty there and at Boston University.

First Round Screening Committee Members

Junior Screening Committee:

Anna Clift
Merilee Klemp
Nicola Melville
William Polk

Senior Strings Screening Committee:

Anthony Devroye
Sumire Kudo
Christine Larson Seitz

Senior Winds Screening Committee:

James Carter
Christopher French
Andrea Mather Stow



Melissa Matson is the principal violist of the Rochester Philharmonic Orchestra, as well as a versatile chamber musician. She has been a frequent performer since 1987 with Chamber Music Rochester and the Skaneateles (NY) Festival. In a recent recital, Ms. Matson premiered works written for her by Rochester composers Verne Reynolds, David Liptak

and Jeff Tyzik. As a founding member of the Chester String Quartet, located at Indiana University South Bend, Ms. Matson performed throughout the U.S. and won top chamber music awards at the Munich and Portsmouth (England) international competitions. After her tenure with the Quartet, she joined the Rochester Philharmonic Orchestra and also the faculty of the Eastman School of Music, where she coached chamber music in the Community Education Division. Her current duties as an associate professor at Eastman include teaching viola orchestral repertoire classes. She also mentors the violists of the Rochester Philharmonic Youth Orchestra. Ms. Matson presented two sessions on orchestral excerpts and audition preparation at the 2004 ViolaFest in Binghamton, NY. Ms. Matson received her Bachelor's and Master's degrees from Eastman, where she studied with Martha Katz and was awarded the coveted Performer's Certificate. Her chamber music training includes work with the Cleveland and Juilliard Quartets, as well as study at The Quartet Program and the Aspen Center for Advance Quartet Studies. She is honored to have also studied with Heidi Castleman and Karen Tuttle. Ms. Matson has been a chamber music participant in the Aspen, Norfolk, and Grand Teton summer festivals, as well as principal violist and faculty member of Eastern Music Festival.



Alan R. Kay, clarinetist, joined the Grammy Award winning Orpheus Chamber Orchestra in 2002 and currently serves as the Orchestra's Program Coordinator. He recently received a Presidential Scholars Teacher Award, which included a plaque and congratulations from First Lady Laura Bush in Washington. A member of Windscape and the prize-winning ensemble

Hexagon, he also performs regularly with the Chamber Music Society of Lincoln Center and Da Camera of Houston. Mr. Kay is currently principal clarinet of New York's Riverside Symphony and serves as principal clarinet with the Orchestra of St. Luke's. He is Artistic Director of the New York Chamber Ensemble, whose series at the Cape May Music Festival draws growing audiences each year. This past summer, Mr. Kay returned for his fourth season to the Yellow Barn Summer Festival and School and taught extensively at the Summer Music Academy in Leipzig, Germany. Last season's highlights included a collaboration with Jaime Laredo and the New York String Orchestra in a Carnegie Hall performance of Mozart's Sinfonia Concertante as well as performing the music of Hanns Eisler with the Tokyo String Quartet. Also a conductor, he recently led the Orchestra at Azusa Pacific University and has conducted Speculum Musicae, the Cape May Festival Orchestra, the New York Chamber Ensemble, the Buck's County and Staten Island Symphonies and a run of Raphael Mostel's "The Adventures of Babar." Mr. Kay teaches on the faculties of the Manhattan, Hartt and Juilliard Schools. He is the father of two boys, Noah and Jonathan, ages 11 and 8.

SEMIFINAL JURORS



Judith Gordon was chosen as "Musician of the Year" in 1996 by the Boston Globe. She is flourishing as a piano soloist, collaborative artist and imaginative programmer. Ms. Gordon gave her New York recital debut at the Metropolitan Museum of Art's Introductions Series. In addition to concerto appearances with the Boston Pops, in the past five years Judith Gordon has been soloist with the Pro Arte Chamber Orchestra, the Boston Modern Orchestra Project, the Civic Symphony of Boston, the MIT Symphony Orchestra, the Longwood Symphony and the Berkshire Symphony Orchestra. She has been presented frequently by the Fleet Boston Celebrity Series and has participated in each season of Emmanuel Music's recent seven-year survey of music by Schubert. With Robert Kapilow, she explored music of Beethoven and Debussy on his "What Makes it Great" programs in Boston, Los Angeles and New York. The wide range of composers with whom she has worked or who have written music for her includes Martin Brody, Peter Child, Alan Fletcher, John Harbison, David Horne, Lee Hyla, Libby Larsen and Peter Lieberman. She has appeared in concert with artists and ensembles including soprano Lisa Saffer; mezzo-sopranos Janice Felty and Lorraine Hunt Lieberman; tenor William Hite; baritone James Maddalena; cellists Andres Diaz, Rhonda Rider and Yo-Yo Ma; violinists James Dunham, Cynthia Phelps and Marcus Thompson; violinists Rose Mary Harbison and Andrew Kohji Taylor; oboist Douglas Boyd; pianists Leonard Stein and Robert Levin; the Arianna, Borromeo, Lydian, and St. Lawrence string quartets; the Boston Chamber Music Society, Collage New Music, Essential Music, Santa Fe New Music and many members of the Boston Symphony Orchestra and the St. Louis Symphony Orchestra.



Shmuel Ashkenasi, concert violinist and chamber musician, was born in Tel-Aviv, Israel in 1941. He attended the Musical Academy of Tel-Aviv and gave his first public performance while still very young. Ashkenasi came to the United States on a scholarship to study with Efrem Zimbalist at the Curtis Institute in Philadelphia. The international music community discovered him quickly at Belgium's Queen Elizabeth Competition, Washington's Meriwether Post Competition (first prize) and the Moscow Tchaikovsky Competition in 1962. Ashkenasi toured the Soviet Union twice and currently concertizes every year throughout Europe, Israel and the Far East. He often performs with American orchestras such as the Philadelphia Orchestra, Boston Symphony, Chicago Symphony, National Symphony, Los Angeles Philharmonic, Atlanta of Berlin, Hamburg, Munich, Zurich, Rotterdam, Geneva and Stockholm. Ashkenasi has been the choice of many of the world's most distinguished conductors, including Stokowski, Boehm, Kempe, Leinsdorf, Kubelik, Skrowaczewski and Ancerl. He has recorded Paganini Violin Concertos with the Vienna Symphony Orchestra under the Deutsche Grammophone Recording label. As first violinist of the famed Vermeer Quartet, he has gained a reputation as one of the world's outstanding chamber musicians. Mr. Ashkenasi is Professor of Music and Artist-in-Residence at Northern Illinois University, in DeKalb, Illinois.



James Dunham, soloist, chamber musician and teacher, is active internationally as a recitalist and guest artist. He has collaborated with such renowned artists as Emmanuel Ax, Joshua Bell, Lynn Harrell, Cho-Liang Lin, and members of the American, Guarneri, Juilliard, Takács, and Tokyo Quartets. An advocate of new music, composers with whom he has worked include John Corigliano, Osvaldo Golijov, Libby Larsen and Christopher Rouse. Mr. Dunham is a frequent guest artist with many ensembles in the U.S. and abroad and has served as acting principal viola with the Boston Symphony (Ozawa) and Dallas Symphony (Litton). He was the founding violist of the Sequoia String Quartet, winners of the 1976 Naumburg Award, and later performed as violist of the GRAMMY Award winning Cleveland Quartet. Now Professor of Viola at Rice University's Shepherd School of Music, where he directs its Master of Music in String Quartet program, Mr. Dunham previously taught at the New England Conservatory (where he served as Chair the String Department) and the Eastman School of Music. He frequently presents master classes at the world's leading universities and conservatories and is much sought after as a competition jurist. Summer activities have included participation in many festivals, including Aspen, Domaine Forget, Marlboro, Musicorda, Sarasota, Tanglewood and Yale at Norfolk. He served as principal violist of the San Diego Mainly Mozart Festival for ten seasons and is a regular participant in the Festival der Zukunft in Ernen, Switzerland. Mr. Dunham is featured soloist on two recent CDs (Crystal Records, Albany Records) and has recorded with the Sequoia Quartet for Nonesuch and Delos and with the Cleveland Quartet exclusively for Telarc. His viola is a Gaspar da Salo, ca. 1585.



Michael Whitcombe, alto saxophonist, made his professional debut with the Rochester Philharmonic at age seventeen as the First Prize-winner of the Young Artist Competition and his recording debut performing Jacques Ibert's Concerto on the Koch International Classics label with the San Diego Chamber Orchestra. Mr. Whitcombe is an original member of the PRISM Quartet, founded in 1984. The PRISM Quartet has been acclaimed internationally for their accomplished and widely varied performances and intriguing collaborations with both jazz and concert artists. PRISM has commissioned or presented the premieres of over 100 works. In 2000, PRISM commissioned William Bolcom to write a concerto grosso which they have performed with 19 orchestras. Additional commissions include *Animal, Vegetable Mineral* by Steve Mackey to be premiered by the Nashville Symphony in 2005 and again in Holland in 2007. Jennifer Higdon will also compose a new concerto for PRISM to be premiered in 2008. The Quartet has recently established four annual commissioning awards in composition for students in Greater Philadelphia, New York City, the State of Michigan and the Walden School for Young Composers in Dublin, New Hampshire. PRISM's 2005-06 New York and Philadelphia concert season includes a 20th Anniversary Celebration featuring 22 world premiere composer dedications to the ensemble, a program of recent music from Paris featuring "Le Saxophone Spectral" and the ensemble's annual World Premieres concert. In the summer of 2005, PRISM begins an annual week-long saxophone quartet institute at the Interlochen Center for the Arts. In 2006, PRISM will be presented by Carnegie Hall at Zankel Hall on a composer retrospective featuring Steve Mackey. Mr. Whitcombe received his training at the Eastman School of Music in both the Preparatory and Collegiate Divisions, where he was an Eastman Merit Scholar, and holds Bachelor and Master of Music Degrees from the University of Michigan.



Gregory Hustis has been principal horn of the Dallas Symphony Orchestra since 1976. A graduate of Curtis Institute of Music, where he studied with Mason Jones, Mr. Hustis has performed as soloist with numerous orchestras including the Utah, Knoxville and Dallas symphonies, the Latvian Chamber Orchestra, Northwest Chamber Orchestra, National Repertory Orchestra and the Dallas Symphony Orchestra. As a clinician, chamber music player and recitalist, he has been a featured guest artist at many festivals, including the Sarasota, Round Top, Orford, Bowdoin, Breckenridge, Mainly Mozart, Santa Fe Chamber Music Festivals, the Scotia Fest, Laplands Festpel and the Brevard Music Festival. Mr. Hustis is Artistic Director and Director of Chamber Music at Music in the Mountains in Durango, Colorado. Mr. Hustis has premiered and recorded many concertos for horn and orchestra, including Joseph Schwantner's *Beyond Autumn*, a work commissioned by the International Horn Society. He has also premiered and recorded concertos by Eric Ewazen, Simon Sargon and August Read Thomas. Along with numerous orchestral recording as Principal Horn of the Dallas Symphony, Mr. Hustis can also be heard as soloist and chamber music player on many labels, including Crystal, Gasparo, Klavier, Centaur, Hester Park and a soon-to-be-released album for Hyperion. He is active in Dallas's busy commercial recording industry, where he has played countless sessions for film, television and radio. Mr. Hustis has taught horn for over twenty-five years at Southern Methodist University, where in 1995, he was presented the Meadows Foundation Distinguished Teaching Award. Mr. Hustis is co-owner of TrumCor, a company that manufactures mutes for brass instruments.



Richard Killmer is a concert oboist and Professor of Oboe at the Eastman School of Music and a member of the faculty of the Yale School of Music as Visiting Professor of Oboe. He was also principal oboist of the St. Paul Chamber Orchestra for eleven years. He began his early study in El Paso, Texas, where he played in the El Paso Symphony. Killmer received a B.A. in Music Education from Colorado State College (now the University of Northern Colorado). There, he studied woodwinds with William Gower, cello with Donald Garlick and violin with Henry Ginsberg. Upon graduation, he became Orchestra Director for the Longmont, Colorado public schools, a post he held until entering the U.S. Army in 1962. During his military career, he was principal oboist with the NORAD Band and baritone saxophonist with the NORAD Commander's Dance Band, performing on numerous recordings and television programs. Killmer attended the Yale School of Music where he studied with Robert Bloom and received his M.M., M.M.A., and D.M.A. degrees. He has served as juror for the first Lucarelli Oboe Competition, the first Gillet Oboe Competition and several international competitions, including Geneva, Tokyo and Prince Edward Island, as well as competitions in Midland-Odessa (TX), South Bend (IN) and New York City. Killmer has been principal oboist with the Aspen Music Festival, the Mainly Mozart Festival, and the Boston Chamber Music Society. During past summers, Killmer has taught and performed at the Sarasota Music Festival, the Norfolk Chamber Music Festival and the Banff Centre. Joining the Eastman School faculty in 1982, Richard Killmer was awarded the school's 1984-1985 Eisenhart Award for Excellence in Teaching.

MEDAL AND SCHOLARSHIP SPONSORS

Prizes

THE FISCHOFF GRAND PRIZE
\$7,500

The Joseph E. Fischhoff Memorial Winner's Tour is awarded to the grand prize winner.

THE FLORENCE V. CARROLL
JUNIOR PRIZE DIVISION
First Place Scholarship
\$2,000

Second Place Scholarship
\$1,500

Third Place Scholarship
\$1,000

KENNETH GEOFFROY MEMORIAL AWARD
\$500

Highest-ranking Junior Ensemble from the Michiana Region
Underwritten by Patricia Geoffroy

SENIOR DIVISION WINDS

Gold Medal
\$3,000

Silver Medal
\$2,000

Bronze Medal
\$1,000

SENIOR DIVISION STRINGS

Gold Medal
\$3,000

Silver Medal
\$2,000

Bronze Medal
\$1,000

The Grand Prize Medal

Sponsored by Dennis and Virginia Bamber

Dennis Bamber, born in South Bend, has been involved in music all of his life. He started playing the piano at age six and saxophone at the age of 10. He attended Indiana University where he received his Bachelor's and Master's degrees in music performance. He was also the recipient of a Bronze Medal at the International Saxophone Competition in Geneva, Switzerland. After some successful years as a performer, teacher, and clinician, Mr. Bamber started The Woodwind & Brasswind in 1978. It has since grown into one of the largest sellers of musical instruments in the world with an international reputation. The Bambers have always realized the value of education in the arts, as is evidenced by the endowed Woodwind & Brasswind Scholarship for incoming students at Indiana University, Bloomington. The Bambers are dedicated to supporting and helping the arts flourish, particularly in their hometown and are most proud to be the sponsors of the Fischhoff Grand Prize.

Senior Division Winds

Gold Medal - Senior Wind Division
Sponsored by Douglas and Karen Mick

Both Douglas and Karen Mick are lifelong residents of Elkhart, and they have three married children. Karen is a former Fischhoff Board member and presently serves on the Fischhoff Artist-of-the-Month Screening Committee. Douglas has been active in educational activities in Elkhart, Indiana, for twelve years. He is taking on the responsibility of President of Fischhoff's Board of Directors. Douglas is Vice President of Merrill Lynch. Music has been an important part of the Micks' lives, and they are very proud to be an active part of the Fischhoff National Chamber Music Association.

Senior Division Strings

Gold Medal - Senior String Division
Sponsored by Richard and Tamara Bailey

Rick and Tammy wish to salute all of this year's Fischhoff musicians and their families in recognition of the exceptional commitment of energy, will, talent and time to participate in this exciting event. "The Gold Medal is a symbol of significant achievement. We hope it serves as a reminder of not only this great 2005 Fischhoff Competition, but also the value of working together with friends toward a worthy goal," say the Baileys. With their support, the Bailey family salutes all those who make the Fischhoff possible: the Fischhoff executive staff, the Fischhoff Board of Directors and the scores of volunteers who bring this beautiful music to the South Bend community.

Silver Medal - Senior String Division
Sponsored by Carolyn Friedemann Garber

The Senior String Division Second Prize is underwritten by Carolyn Garber in honor of her late parents, Herbert (1900 - 1995) and Alma Reinholtz Friedemann (1909 - 1997). Carolyn believes that her father and mother would be very proud that this prize honors their love of music by encouraging young chamber musicians throughout the world. It is Carolyn's hope that the group who receives this annual prize will continue their music studies and inspire many others to enjoy chamber music.

Bronze Medal - Senior Wind Division
Sponsored by Edna Huizinga

Edna Huizinga is sponsoring the Senior Division Bronze Medal in memory of her husband, Richard Huizinga. Mr. Huizinga's great love, even in his later years, was to accompany children receiving treatment at the Shriner's Hospital for Children in Chicago. This gift to Fischhoff's young musicians is in keeping with this interest in the well-being of youth. Mrs. Huizinga is committed to the arts and young people through her piano teaching. For many years, she was an active member and officer of the Music Teachers' Association in northern Indiana. This prize is a further example of the generous commitment of both Mrs. Huizinga and her late husband to furthering the arts in the community.

The Barbara Shields Byrum
Senior String Bronze Prize

Endowed by the Barbara Shields Byrum Fund for the Fischhoff National Chamber Music Association of the Community Foundation of St. Joseph County

The Senior String Division Third Prize is sponsored by Bill and Katie Shields and Barbara Shields Byrum. Michiana advocates for many years, Bill and Katie Shields have undertaken major leadership roles in numerous community initiatives, including the establishment of the Purdue School of Technology on the Indiana University South Bend campus. They also have been instrumental in establishing health-related scholarships through the Community Foundation of St. Joseph County and the local hospitals. They funded the first Endowed Chair for a Dean at Indiana University South Bend, the Dean of Nursing and Health Professions. The Shields Family is honored to support the artistic achievements of future young chamber ensembles through Fischhoff's first endowed prize.

The Florence V. Carroll Junior Prize Division

First Place Scholarship

Sponsored by Taylor Lewis-Garber and William Garber — *Forté* Members

William Garber's mother, Elizabeth "Betty" Rose Garber, was an educator for over thirty years mainly in the Southwest Michigan area public school system. Following retirement and the death of her late husband, V. Edward "Ed" Garber, Mrs. Garber today continues her commitment to helping both foreign and domestic students find the financial resources to fund their education. A competent classical pianist, Mrs. Garber loves great music. This year, we honor her for her unflagging commitment to the development of young talent in whatever field they wish to pursue.

Second Place Scholarship

Sponsored by Paul and Ann Divine

Paul and Ann Divine are honored to provide this prize scholarship to the winners of the Junior Division Silver Medal in recognition of the discipline and dedication each has shown to chamber music. Through their achievement, these musicians also pay tribute to their parents, teachers and coaches who have helped them reach the highest level of performance. Congratulations to the winners and to all those who have had a part in this great project.

Third Place Scholarship

Sponsored by Marijke, Price, Kirsten, and Marc Niles

Marijke, Price, Kirsten, and Marc Niles are sponsoring the Third Place Junior Division Prize to honor all past Fischhoff participants, in particular the Juniors, for their enthusiasm and love for music. "We want to pay tribute to the Fischhoff's musicians, who have given us such extraordinary inspiration in the many years we attended this very special competition," says the Niles family. "It was our family's annual three-day celebration of music and Mother's Day. We want to encourage this year's third-prize winner to always remember the pride you feel today and treasure your memories of the Fischhoff Competition. We moved to Vermont, but Fischhoff moved with us in our hearts... and the music plays on."



Taste the difference a season makes.

The perfect complement to a wonderful evening of entertainment begins with a culinary performance prepared and served by the professionally trained staff at Sorin's. Enjoy dining through thoughtfully prepared menus, that spring up with each change in season. Dine at Sorin's and embrace the season.



Located at The Morris Inn
On the Campus of Notre Dame

Reservations Recommended • 631-2020
www.sorinsnd.com

DISCOVER IT. EXPLORE IT. GROW WITH IT.

EASTMAN SCHOOL OF MUSIC



Chamber Music Faculty

Jean Barr, *co-chair*
Timothy Ying, *co-chair*

Sylvie Beaudette
Elinor Freer
Anna Gourfinkel
Anne Lindblom Harrow
Margery Hwang
Mark Kellogg
Douglas Prosser
Mark Salatino
Tatiana Tchekina
David Ying
Janet Ying
Phillip Ying

John Celentano,
professor emeritus
Abram Loft,
professor emeritus

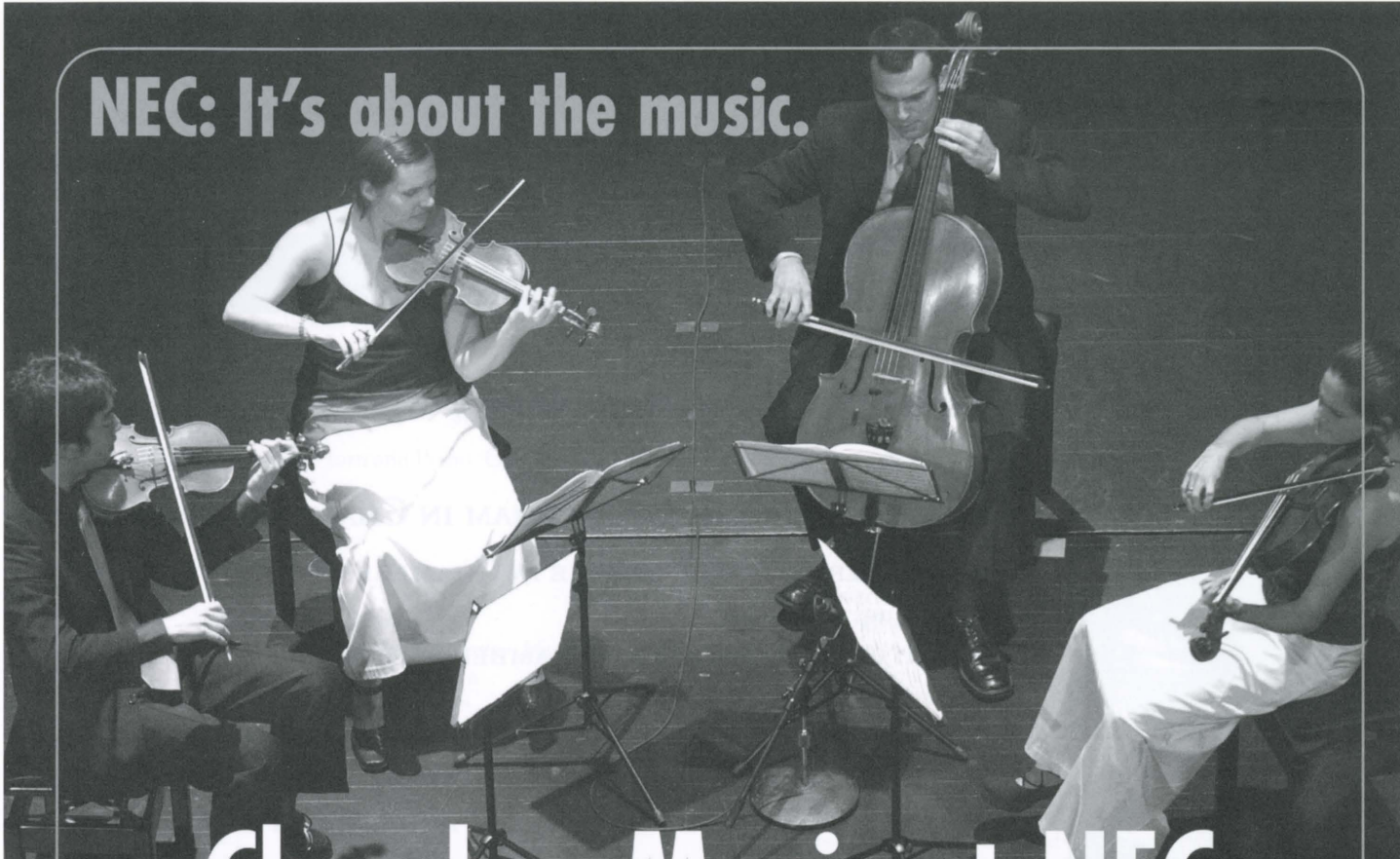
At Eastman, the study and collaborative spirit of chamber music play an essential role in fulfilling our goal of bringing music to every part of contemporary society. All Eastman chamber music faculty members hold dual appointments in other departments, and many members of our distinguished studio faculty regularly coach chamber music.

Application deadline December 1
Early application deadline November 1

EASTMAN
SCHOOL OF MUSIC
UNIVERSITY OF ROCHESTER

800 388 9695 or 585 274 1060
admissions@esm.rochester.edu
www.rochester.edu/Eastman

NEC: It's about the music.



Chamber Music at NEC

NEW ENGLAND CONSERVATORY is home to a world-class chamber music program, featuring:

Professional String Quartet Training Program

Professional Piano Trio Training Program

Jury-selected Honors Ensembles

Faculty-coached Student Ensembles

The Borromeo Guest Artist Competition

Lucy Stoltzman, Chair of Chamber Music

Chamber Music Faculty

Norman Bolter
James Buswell
Stephen Drury
William Fedkenheuer
(Borromeo String Quartet)
John Gibbons
John Heiss
Martha Strongin Katz
Paul Katz
(Professional String Training Program)
Yeesun Kim
(Borromeo String Quartet)
Nicholas Kitchen
(Borromeo String Quartet)

Laurence Lesser
Carol Ou
Donald Palma
Kenneth Radnofsky
Eric Rosenblith
Robert Paul Sullivan
Irma Vallecillo
Vivian Hornik Weilerstein
(Professional Piano Trio Training Program)
William Wrzesien
Benjamin Zander
Patricia Zander
(and other members of the College faculty at NEC)

Resident Ensembles: *Borromeo String Quartet, NEC's Weilerstein Trio*

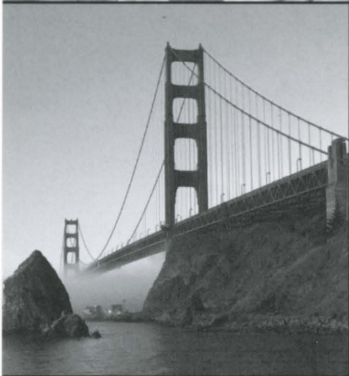
**NEW ENGLAND
CONSERVATORY**

Office of Admissions
290 Huntington Ave., Boston MA 02115
Tel: 617-585-1101 Fax: 617-585-1115
admission@newenglandconservatory.edu

In photo: NEC's Jupiter String Quartet—2004 Fischhoff National Chamber Music Competition winners—have since gone on to win the 2004 Banff International String Quartet Competition and 2005 Young Concert Artists International Auditions. Photo by Donald Lee. NEC is an equal opportunity, affirmative action institution.

www.newenglandconservatory.edu

SAN FRANCISCO CONSERVATORY OF MUSIC



World-class city, exceptional faculty, intimate class settings

AMERICA'S FIRST DEGREE PROGRAM IN CHAMBER MUSIC

- MASTER OF MUSIC DEGREE IN CHAMBER MUSIC
(Strings and Piano)
- ARTIST CERTIFICATE IN CHAMBER MUSIC
(Strings and Piano)
- OVER 300 PERFORMANCE OPPORTUNITIES ANNUALLY
- MASTER CLASSES AND CONCERTS WITH
DISTINGUISHED VISITING ARTISTS AND FACULTY

Additional Programs of Study

Bachelor of Music and Music Diploma

Master of Music

Professional Studies Diploma in Instrumental Performance

Postgraduate Diploma in Vocal Performance

Scholarship and financial aid available for qualified students

OFFICE OF ADMISSION

Tel 800.899.SFCM

admit@sfc.edu

www.sfc.edu

San Francisco Conservatory of Music at Civic Center • Relocating Fall 2006!



JUNIOR QUARTERFINAL REPERTOIRE

Friday, May 6, Leighton Concert Hall, DeBartolo Performing Arts Center

Each ensemble has submitted a program at least fifteen minutes in length.
The Jury will have chosen selected movements or segments totaling fifteen minutes.

Repertoire selections will not be announced.
Please hold applause until the conclusion of the audition.

9:20 a.m. – J1 Etoile Trio

Community Music School of Webster University, Saint Louis, Missouri
Holly Jenkins, 13, Violin
Emily Wozniak, 17, French Horn
Robin Jenkins, 16, Piano

Trio in E-flat Major for Violin, Horn and Piano, Op. 40 Brahms
I. Andante
II. Scherzo: Allegro

9:40 a.m. – J2 Fulcrum Trio

New England Conservatory Preparatory Division, Boston, Massachusetts
Oren Ungerleider, 15, Violin
Tavi Ungerleider, 15, Cello
Robin Reinert, 17, Piano

Piano Trio in C minor, Op. 101 Brahms
I. Allegro energico

Piano Trio Rebecca Clarke
III. Allegro vigoroso

10:00 a.m. – J3 MMMM Good

Midwest Young Artists, Highwood, Illinois
Maira Bette, 16, Violin
Scot Moore, 15, Violin
Madeline Sharp, 16, Viola
Mindy Park, 15, Cello

String Quartet in D Major, Op. 44, No. 1 Mendelssohn
I. Molto Allegro vivace

String Quartet in G minor, Op. 10 Debussy
I. Animé et très décidé

10:20 a.m. – J4 Trio B-natural

New England Conservatory Preparatory Division, Boston, Massachusetts
Yuga Cohler, 15, Oboe
Elzbieta Weyman, 18, Viola
Natalie Durham, 16, Piano

Two Rhapsodies Loeffler
I. L'Etang (The Pool)
II. La Cornemuse (The Bagpipe)

10:40 a.m. – J5 Avante Quartet

Midwest Young Artists, Highwood, Illinois
Samantha O'Connell, 16, Violin
Katie Belleville, 16, Violin
Gerry Wawrzynek, 17, Viola
Kevin Kunkel, 16, Cello

String Quartet No. 8, Op. 110 Shostakovich
I. Largo
II. Allegro molto

String Quartet in E-flat Major, Op. 51 Dvorak
II. Dumka. Andante con moto

-Break-

11:10 a.m. – J6 Cremona Ensemble

Community Music School of Webster University, Saint Louis, Missouri
Sarah Drake, 17, Violin
Benjamin Hart, 17, Violin
Emilee Newell, 18, Viola
Neil Zundel, 17, Viola
Edward Kim, 16, Cello
Samantha Nawrocki, 18, Cello

String Sextet in G Major, Op. 36 Brahms
I. Allegro ma non troppo

Sextet Schickele
IV. Fast and Driving

11:30 a.m. – J7 BAM Quartet

Midwest Young Artists
Highwood, Illinois
Rachel Goldberg, 13, Violin
Herah Kim, 13, Violin
Sean Yeh, 13, Viola
Gabriel Cabezas, 12, Cello

String Quartet No. 2 in D major Borodin
II. Nocturne

String Quartet No. 8, Op. 110 Shostakovich
II. Allegro molto

Lied ohne worte Domažlický

Gavotte for String Quartet Ledec

JUNIOR QUARTERFINAL REPERTOIRE

Friday, May 6, Leighton Concert Hall, DeBartolo Performing Arts Center

Each ensemble has submitted a program at least fifteen minutes in length.
The Jury will have chosen selected movements or segments totaling fifteen minutes.

Repertoire selections will not be announced.
Please hold applause until the conclusion of the audition.

11:50 a.m. – J8 Trio Riendo

Chamber Music Connection, Worthington, Ohio

Heather Kufchak, 17, Violin
Annalisa Boerner, 17, Viola
Kevin Jablonski, 17, Bass

Serenade for String Trio, Op 10 V. Rondo	Dohnanyi
String Trio No. 1, Op. 34 III. Mässig schnelle Viertel	Hindemith
Midnight Child	Charles Washington

12:10 p.m. – J9 Washington String Quartet

The Westminster Schools, Atlanta, Georgia

Josh Lipton, 17, Violin
Jim Larson, 16, Violin
Kate Larson, 16, Viola
Christine Shim, 15, Cello

String Quartet No. 2 in A minor, Op.13 I. Adagio - Allegro vivace	Mendelssohn
Quartet in G major, Op.77, No.1 IV. Finale: Presto	Haydn
Crisantemi Andante mesto	Puccini

12:30 p.m. – J10 Medianoche Quartet

American Youth Philharmonic, Annandale, Virginia

Leah Meredith, 16, Violin
Erin Phelps, 14, Violin
Martin Piazza, 17, Viola
Charlaine Prescott, 16, Cello

String Quartet No. 8, Op. 110 I. Largo II. Allegro molto III. Allegretto IV. Largo V. Largo	Shostakovich
--	--------------

-Break-

1:50 p.m. – J11 MYAPE Quintet

Midwest Young Artists, Highwood, Illinois

Hiral Desai, 17, Percussion
David Hutter, 17, Percussion
Zachary Robertson, 16, Percussion
Stefani Weiss, 16, Percussion
Molly Yeh, 15, Percussion

Ogoun Bagadris	Rouse
Quintet for Percussion I. III.	Lepak

2:10 p.m. – J12 Oberon Trio

Community Music School of Webster University, Saint Louis, Missouri

Henry Wang, 18, Violin
Gareth Briscoe, 18, Cello
Nicholas Susi, 17, Piano

Trio Elegiaque No. 1 in G minor	Rachmaninoff
Piano Trio in D Major, Op. 70 I. Allegro vivace con brio	Beethoven

2:30 p.m. – J13 Apollo Piano Trio

Settlement Music School, Philadelphia, Pennsylvania

Ben Ohdner, 16, Violin
Michael Dahlberg, 15, Cello
Peter Dugan, 16, Piano

Premier Trio, Op. 35 I. Prélude et fugue: Lento	Joaquin Turina
Piano Trio in D minor, Op. 120 I. Allegro, ma non troppo II. Andantino III. Allegro vivo	Gabriel Fauré
La Muerte del Ange	Piazzolla arr. Jose Bragato

2:50 p.m. – J14 opus.

Chamber Music Connection, Worthington, Ohio

Jeff Myers, 15, Violin
James Rubino, 16, Violin
Reuben Payne, 15, Viola
Matt Kufchak, 16, Cello

Quartet in C Major, K. 465 "Dissonance" II. Andante cantabile IV. Allegro	Mozart
Four For Tango	Piazzolla

JUNIOR QUARTERFINAL REPERTOIRE

Friday, May 6, Leighton Concert Hall, DeBartolo Performing Arts Center

Each ensemble has submitted a program at least fifteen minutes in length.
The Jury will have chosen selected movements or segments totaling fifteen minutes.

Repertoire selections will not be announced.
Please hold applause until the conclusion of the audition.

3:10 p.m. – J15 Cerberus

Chicago Youth Symphony Orchestra, Chicago, Illinois

Ophelia Hu, 15, Piano
Agnes Likos, 17, Violin
Mira Luxion, 15, Cello

Café Music Schoenfield
I. Café Music

Piano Trio in C minor, Op. 1, No. 3 Beethoven
II. Andante Cantabile con Variazioni

Piano Trio Hoboken XV: 12 in E: Rondo Haydn
III. Presto

-Break-

3:40 p.m. – J16 Green Lake Trio

Interlochen Arts Academy, Interlochen Michigan

Zhu Zhu, 18, Piano
Carlos Silva, 18, Violin
Josue Gonzalez-Davila, 17, Cello

Piano Trio in E-flat Major, Op. 1, No. 1 Beethoven
I. Allegro Moderato

Piano Trio in C Major, Op. 87 Brahms
II. Andante con moto

Piano Trio in A minor Ravel
II. Pantomime

4:00 p.m. – J17 Tűzforró

Chicago Youth Symphony Orchestras, Chicago, Illinois

Hannah Stuart, 17, Violin
Anna Spina, 17, Horn
Kevin Chang, 16, Piano

Trio in E-flat Major for Violin, Horn and Piano, Op. 40 Brahms
II. Scherzo: Allegro

Trio for Violin, Horn and Piano Ligeti
II. Vivacissimo molto ritmico

Trio for Violin, Horn and Piano Kauder
I. Molto tranquillo e sostenuto

4:20 p.m. – J18 Rembrandt Trio

North Carolina School of the Arts, Winston-Salem, North Carolina

Andrew Eitel, 18, Piano
Philip Kim, 18, Flute
Anna Wittstruck, 17, Cello

Trio in G minor, Op. 63 von Weber
1. Allegro moderato

Another Spring (1988) Bun-Ching Lam

4:40 p.m. – J19 Trio Con Fuoco

Chicago Youth Symphony Orchestra, Chicago, Illinois

Kevin Hu, 11, Violin
Zuren Hsueh, 13, Cello
Brian Chang, 14, Piano

Piano Trio in D minor, Op. 49 Mendelssohn
IV. Finale: Allegro assai appassionato

Four Seasons in Bellville Rick Sowash
III. Summer

Piano Trio in C minor, Op. 66 Mendelssohn
II. Andante espressivo

5:00 p.m. – J20 Wind & Rein Woodwind Quintet

Midwest Young Artists, Highwood, Illinois

Rhiannon Jerch, 18, Flute
Mickey Mangan, 18, Oboe
Lars Heemskerck, 16, Clarinet
James Rein, 18, Horn
Ryan Mercer, 16, Bassoon

Woodwind Quintet, Op. 79 Klughardt
II. Allegro vivace

IV. Adagio - Allegro molto vivace

Woodwind Quintet in E minor, Op. 67, No. 2 Danzi
II. Larghetto
III. Menuetto - Trio

Three Shanties for Wind Quintet, Op. 4 Arnold
III. Allegro Vivace

-Break-

JUNIOR QUARTERFINAL REPERTOIRE

Friday, May 6, Leighton Concert Hall, DeBartolo Performing Arts Center

Each ensemble has submitted a program at least fifteen minutes in length.
The Jury will have chosen selected movements or segments totaling fifteen minutes.

Repertoire selections will not be announced.
Please hold applause until the conclusion of the audition.

5:30 p.m. – J21 AYM Piano Trio

Midwest Young Artists, Highwood, Illinois
Shawn Moore, 17, Violin
Christopher Trigg, 18, Cello
Samuel Cormier-Iijima, 16, Piano

Café Music Schoenfield
II. Rubato
III. Presto

Piano Trio in A minor Ravel
I. Modere
II. Pantoum

5:50 p.m. – J22 Alisier Trio

New England Conservatory Preparatory Division, Boston, Massachusetts
Emily Smith, 18, Violin
Jude Tedaldi, 17, Cello
Lee Dionne, 16, Piano

Piano Trio in A Minor, Op. 50 Tchaikovsky
II. A. Tema con Variazioni

Piano Trio Ives
II. TSIAJ

6:10 p.m. – J23 Saint Paul String Quartet

St. Paul, Minnesota
Anna Clearman, 18, Violin
Sam Bjork, 16, Violin
Addie Deppa, 18, Viola
Rachael Ryan, 18, Cello

String Quartet in C minor, Op. 51, No. 1 Brahms
IV. Allegro

String Quartet in G minor, Op. 74, No. 3 Haydn
IV. Finale. Allegro con Brio

String Quartet in F Major Ravel
IV. Vif et Agite

6:30 p.m. – J24 Three Strings and A Piano

The Juilliard School, Pre-College Division, New York, New York
Kensho Watanabe, 17, Violin
Marc Sabbah, 17, Viola
Caleb van der Swaagh, 17, Cello
Steven Lin, 16, Piano

Piano Quartet No. 1 in C minor, Op. 15 Faure
II. Scherzo: Allegro vivo

Piano Quartet in E-Flat Major, Op. 47 Schumann
III. Andante cantabile

Piano Quartet No. 1 in G minor, Op. 25 Brahms
IV. Rondo alla Zingarese : Presto

6:50 p.m. – J25 Eleve Arte String Quartet

Buddy Conservatory of Music, Madison, Wisconsin
Krista Stewart, 15, Violin
Melissa Wei, 17, Violin
Vicki Powell, 16, Viola
Jimmy Kang, 16, Cello

String Quartet No. 1 in E minor "From My Life" Smetana
I. Allegro vivo appassionata
III. Largo sostenuto

String Quartet No. 3 in F Major, Op. 73 Shostakovich
III. Allegro non troppo

7:10 p.m. – J26 Animato Trio

New England Conservatory Preparatory Division, Boston, Massachusetts
Hillary Ditmars, 14, Violin
Sebastian Baverstam, 16, Cello
Jung A Bang, 16, Piano

Piano Trio in C Major, Op. 87 Brahms
I. Allegro

Piano Trio in E Minor, Op. 67 Shostakovich
IV. Allegretto

For setting an example



MERRILL LYNCH
is committed to
THE FISCHOFF NATIONAL
CHAMBER MUSIC ASSOCIATION
for inspiring us through excellence.

574-294-5525
1-888-687-0692

MERRILL LYNCH
307 SOUTH MAIN STREET
ELKHART, IN 46516



A World of Possibilities



At Michigan, students get the best of both worlds: the close teacher-student relationship of a conservatory combined with the limitless academic possibilities of a major university. The University of Michigan School of Music is consistently ranked among the top performing arts schools in the country. The School offers degrees in composition, conducting, dance, jazz, music education, musicology, music theory, musical theatre, performing arts technology, and theatre. With over 10,000 School of Music alumni worldwide, the network of support continues well after graduation (just say the magic words, "Go Blue").

M I C H I G A N

For further information, contact the
Office of Admissions, 734-764-0593, or visit our
Web site at www.music.umich.edu

MANNES

COLLEGE OF MUSIC

Artistry & Community

DEAN

Joel Lester

FACULTY

Stringed Instruments

Nina Beilina, *Violin*
Shirley Givens, *Violin*
Lewis Kaplan, *Violin*
Ida Kavafian, *Violin*
Chin Kim, *Violin*
Michelle Kim, *Violin*
David Nadien, *Violin*
Margaret Pardee, *Violin, Viola*
Daniel Phillips, *Violin*
Todd Phillips, *Violin*
Lucie Robert, *Violin*
Aaron Rosand, *Violin*
Ann Setzer, *Violin*
Mark Steinberg, *Violin*
Sally Thomas, *Violin*
Hiroko Yajima, *Violin*
Eugene Becker, *Viola*
Hsin-Yun Huang, *Viola*
Caroline Levine, *Viola*
Paul Neubauer, *Viola*
Daniel Panner, *Viola*
Ira Weller, *Viola*
Timothy Eddy, *Violoncello*
Marcy Rosen, *Violoncello*
Irene Sharp, *Violoncello*
Fred Sherry, *Violoncello*
Barbara Stein Mallow, *Violoncello*
Paul Tobias, *Violoncello*
Marji Danilow, *Double Bass*
Jordan Frazier, *Double Bass*
Homer Mensch, *Double Bass*
Orin O'Brien, *Double Bass*

Piano

Edward Aldwell
Arkady Aronov
Stephanie Brown
Pavlina Dokovska
Vladimir Feltsman
Richard Goode
Yuri Kim
Jacob Lateiner
Irina Morozova
Jerome Rose
Victor Rosenbaum
Thomas Sauer
Nina Svetlanova
Diane Walsh
Inessa Zaretsky

Vocal Accompaniment

Cristina Stanescu
Brian Zeger,
Artist-in-Residence

Voice

Richard Barrett
Amy Burton
Richard Cross
Thomas Cultice
Ruth Falcon
Bonnie Hamilton
Antonia Lavanne
Arthur Levy
Dan Marek
Beth Roberts
Marian Thompson
Theodor Uppman
Robert White

Woodwinds and Brass

Sue Ann Kahn, *Flute*
Judith Mendenhall, *Flute*
Keith Underwood, *Flute*
Richard Dallessio, *Oboe*
Elaine Douvas, *Oboe*
Thomas Stacy, *Oboe and English Horn*
David Krakauer, *Clarinet*
Charles Neidich, *Clarinet*
Mark Nuccio, *Clarinet*
Marc Goldberg, *Bassoon*
Leonard Hindell, *Bassoon*
Frank Morelli, *Bassoon*
Patricia Rogers, *Bassoon*
Allen Won, *Saxophone*
Ranier DeIntinis, *Horn*
David Jolley, *Horn*
Eric Ralske, *Horn*
Vincent Penzarella, *Trumpet*
Thomas Smith, *Trumpet*
Per Brevig, *Trombone*
David Finlayson, *Trombone*
David Taylor, *Bass Trombone*
Stephen Johns, *Tuba*

Timpani and Percussion

Barry Centanni
James Preiss
Glen Velez
Michael Werner

Harp

Susan Jolles

Conducting

David Hayes, *Director of Orchestral and Conducting Studies*
Mark Shapiro, *Choral*

Composition

Robert Cuckson
Leo Edwards
Keith Fitch
David Loeb
David Tcimpidis

Classical Guitar

Frederic Hand
Michael Newman

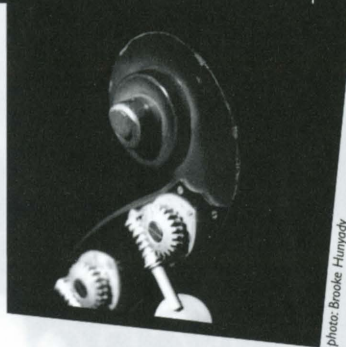


Photo: Brooke Humphrey

Harpsichord

Arthur Haas

Historical Performance Ensembles

The Mannes Baroque Chamber Players,
Nancy Wilson, *Director*

Voice Classes

Thomas Bagwell, *Opera Scenes*
Marianne Barrett, *Diction*
Daniel Biaggi, *Diction*
Richard Cross, *Lieder*
Neal Goren, *Vocal Arts*
Antonia Lavanne, *Lieder*
Rhoda Levine, *Acting*
Glenn Morton, *Diction, Song Interpretation*
Renée Santer, *Diction*
Cristina Stanescu, *Lieder*

Opera

Joseph Colaneri, *Director*
Laura Alley
Susan Caldwell
Nico Castel
Jay Lesenger
Ted Taylor
Susan Woodruff Versage

Opera Master

Artists-in-Residence

Regina Resnik
Renata Scotto

Percussion Ensemble

James Preiss, *Director*

Contemporary Ensemble

Madeleine Shapiro,
Director

Orchestra

David Hayes, *Director of Orchestral and Conducting Studies*

Techniques of Music

Elizabeth Aaron
Kyle Adams
Edward Aldwell
Wayne Alpern
Poundie Burstein
Terry Champlin
Robert Cuckson
Leo Edwards
George Fisher
David Gagne
Lisa Johnson
Joel Lester
David Loeb
Mei-Mei Meng
William Needelman
Frank Nemhauser
Christopher Park
Barbara Podgurski
Richard Porterfield
Carl Schachter
Hedi Siegel
Nicholas Stoia
Christopher Stone

ENSEMBLES - IN-RESIDENCE

The Orion String Quartet

Daniel Phillips, *Violin*
Todd Phillips, *Violin*
Steven Tenenbom, *Viola*
Timothy Eddy, *Violoncello*

Mannes Trio

Hiroko Yajima, *Violin*
Wilhemina Smith, *Violoncello*
Thomas Sauer, *Piano*

The Newman-Oltman Guitar Duo

Michael Newman
Laura Oltman

Major Studies

All orchestral instruments, piano, harpsichord, vocal accompaniment, voice and opera, guitar, composition, theory, conducting.

Programs of Study

Bachelor of Music
Bachelor of Science
Undergraduate Diploma
Master of Music
Professional Studies Diploma

For additional information write or call

Office of Admissions
Mannes College of Music
150 West 85th Street
New York, N.Y. 10024
800-292-3040 or
212-580-0210
mannesadmissions@newschool.edu
www.mannes.edu

Small Classes

Personal Attention

Scholarships Available





THE
FISCHOFF
NATIONAL CHAMBER MUSIC ASSOCIATION

Congratulations Fischhoff Participants!

For musicians, a stay in South Bend
must include a visit to
The World's Largest Music Center



Directions from Notre Dame

Take Angela Blvd. west to State Road 933.
Take SR933 north to Cleveland Road.
Turn Left on Cleveland Road and continue
for approximately 7 miles. Note that
Cleveland Road curves to north (see map)
and is then called Brick Rd. After crossing
over U.S. 31, the first available street to the
left will be Technology Drive. Turn left onto
Technology Drive and continue to the end.
On the left you will find The Woodwind &
Brasswind Music Center.

The Woodwind & Brasswind
4004 Technology Drive
South Bend, Indiana 46628
1-800-348-5003
wwbw.com

SENIOR SEMIFINAL WIND REPERTOIRE

Friday May 6, Decio Mainstage Theatre, DeBartolo Performing Arts Center

Each ensemble has submitted a program at least forty minutes in length.

The Jury will have chosen selected movements or segments totaling twenty-five minutes.

Repertoire selections will not be announced.

Please hold applause until the conclusion of the twenty-five minute audition.

9:30 a.m. – W1 Osomo Quartet

Northwestern University, Evanston, Illinois
 Nathan Nabb, 25, Soprano Saxophone
 Johnny Salinas, 22, Alto Saxophone
 Jeffrey Loeffert, 22, Tenor Saxophone
 Jeremy Williamson, 27, Baritone Saxophone

Quatuor pour Saxophones Allegro non troppo Calmo Poco largo ma risoluto - Allegro energico	Desenclos
Petit Quatuor por Saxophones Goguenardise Cantilène Sérénade comique	Francaix
Quatuor pour Saxophones Elegie Scherzo Rondo final	Lacour
Back Burner	Ticheli

10:00 a.m. – W2 Sonare Wind Trio

East Bridgewater, Massachusetts
 Leandra Botta, 29, Flute
 Jason Beilik, 27, Clarinet
 Christine Pryzbician, 28, Bassoon

Three pieces for Flute, Clarinet and Bassoon Allegro Scherzando Lento Allegro	Piston
Trio in B-flat Major, Op. 61, No 5 Allegro Rondo	Devienne
Trio in C minor Largo Vivace Andante Allegro	Teleman
Suite Breve En Trio Allegro moderato Allegro Vivo Adagio Espressivo Allegro Vivo	Bozza

10:30 a.m. – W3 Arizona State University Saxophone Quartet

Arizona State University, Tempe, Arizona
 Steven Yarbro, 27, Soprano Saxophone
 Michael Napoleon, 22, Alto Saxophone
 Lewis Nelson, 24, Tenor Saxophone
 Miguel Angel Carrasco, 19, Baritone Saxophone

Out of the Blue	Ticheli
Premier Quatuor pour Saxophones, Op. 53 Andante - Allegro Adagio sostenuto Allegro vivace Allegretto	Singelée
Prelude and Fugue in C Major Prelude Fugue	J. S. Bach/ arr. Yarbro
Quatuor pour Saxophones Élégie Scherzo Rondo Final	Lacour

-Break-

11:15 a.m. – W4 Infinity Saxophone Quartet

University of Minnesota, Minneapolis, Minnesota
 Anna Marie Wytko, 22, Soprano Saxophone
 Michael Hanson, 29, Alto Saxophone
 Colin Young, 25, Tenor Saxophone
 Adam Flink, 21, Baritone Saxophone

Premier Quatuor pour Saxophones, Op. 53 Andante - Allegro Adagio sostenuto Allegro vivace Allegretto	Singelee
Back Burner	Ticheli
Quartette (Allegro de Concert) Andante Allegro	Florio
Quatuor de Saxophones Moderato assai - Allegro Elegia Scherzo Intermezzo Final	Feld

SENIOR SEMIFINAL WIND REPERTOIRE

Friday May 6, Decio Mainstage Theatre, DeBartolo Performing Arts Center

Each ensemble has submitted a program at least forty minutes in length.

The Jury will have chosen selected movements or segments totaling twenty-five minutes.

Repertoire selections will not be announced.

Please hold applause until the conclusion of the twenty-five minute audition.

11:45 a.m. – W5 Lago

Carnegie Mellon University, Pittsburgh, Pennsylvania

Alison Crossley, Flute, 21

Elisabeth La Foret, Flute, 23

Elizabeth McGlinchey, Flute, 20

Katherine McKinney, Flute, 21

La Jour d'Ete a la Montagne	Bozza
Pastorale	
Aux Bords du Torrent	
Le Chant des Forets	
Ronde	
Dances of the Lake	Fromm
Allegro	
Andante Animato	
Presto	
Grand Quartet in E minor	Kuhlau
Andante Maestoso	
Scherzo	
Adagio	
Rondo	
Just a short version	Offermans

12:15 p.m. – W6 Twelve-Ten Saxophone Quartet

The University of Michigan, Ann Arbor, Michigan

Geoffrey Landman, 22, Soprano Saxophone

Zachary Shemon, 21, Alto Saxophone

Will Jackson, 22, Tenor Saxophone

Evan Marks, 22, Baritone Saxophone

Rush	Kechley
Quatuor pour Saxophones, Op. 102	Schmitt
Avec une sage decision	
Vif	
Assez lent	
Anime sans exces	
Andante et Scherzo	Bozza
Andante	
Scherzo	
Fantazia	Gibbons/ arr. Hemke
Four for Tango	Piazzolla / arr. Voirpy
Premier Quatuor pour Saxophones, Op. 53	Singelee
Andante - Allegro	
Adagio sostenuto	
Allegro vivace	
Allegretto	

-Break-

2:00 p.m. – W7 Chicago Trombone Quartet

Chicago, Illinois

Casey Maday, 27, Tenor Trombone

Craig Moore, 27, Bass Trombone

Dan Pierce, 24, Alto and Tenor Trombone

Thomas Stark, 34, Alto and Tenor Trombone

Doppelfuge	Albrechtsberger
Quartet for Trombones	Basset
Trois Pièces pour Quatuor Trombones	Bozza
Allegro	
Moderato	
Allegro Vivo	
Trois Chansons	Debussy
Dieu! Qu'il la fait bon regarder	
Quant j'ai ouy le tambourin	
Yver, vous n' estes qu'un villain	
Suite für vier Posaunen	Hornof
Solenne	
Moderato	
Allegro quasi presto	
Andante non troppo	
Molto Allegro deciso con impeto	
Canzon for four Trombones	Scheidt
Concerto a four	Telemann
Adagio	
Allegro	
Grave	
Allegro	

2:30 p.m. – W8 Blackout Saxophone Quartet

University of Houston, Houston, Texas

Kelly Love, 22, Soprano Saxophone

Robert Aguirre, 19, Alto Saxophone

Holly Carlton, 23, Tenor Saxophone

Seth McAdow, 25, Baritone Saxophone

Howling at the Moon	Wilson
Wailing	
Singing	
Conjuring	
Quatuor de Saxophones	Feld
Moderato assai - Allegro	
Elegia	
Scherzo	
Intermezzo	
Final	
Nuages	Bozza
Scherzo	
Quartette (Allegro de Concert)	Florio
Andante	
Allegro	
Trois Pieces	Scarlatti / arr. Pierre / Quartet
Presto Giocoso, K. 427	
Andante Cantabile, K. 474	
Scherzo, K. 519	

SENIOR SEMIFINAL WIND REPERTOIRE

Friday May 6, Decio Mainstage Theatre, DeBartolo Performing Arts Center

Each ensemble has submitted a program at least forty minutes in length.
The Jury will have chosen selected movements or segments totaling twenty-five minutes.

Repertoire selections will not be announced.
Please hold applause until the conclusion of the twenty-five minute audition.

3:00 p.m. – W9 The Cleveland Institute of Music Wind Quintet

The Cleveland Institute of Music, Cleveland, Ohio

Ceora Jaffe, 20, Flute
Sarah Skuster, 20, Oboe
Michael Shane, 20, Clarinet
John Gattis, 21, Horn
Johanna Sterba, 20, Bassoon

Kleine Kammermusik für fünf Bläser, Op. 24, No. 2 Hindemith
Lustig. Massig schnelle Viertel
Walzer. Durchweg sehr leise
Ruhig und einfach. Achtel
Schnelle Viertel
Sehr lebhaft

Quintet (1984) Steinmetz
Prelude
Andante - Vivace - Andante
Chanted - Grazioso - Presto
Intermezzo
Adagio
Canon
Poco Adagio

Quintet in B-flat Major, Op. 56, No. 1 Danzi
Allegretto
Andante con moto
Menuett - Allegretto - Trio - Ruhiger
Allegro

-Break-

3:45 p.m. – W10 Blue Square Saxophone Quartet

Bowling Green State University, Bowling Green, Ohio

Jeff Heisler, 24, Soprano Saxophone
Nathan Mandel, 28, Alto Saxophone
Chris Chmielewski, 21, Tenor Saxophone
Allison Balcetis, 21, Baritone Saxophone

Four For Tango Piazzolla /arr. Claude Vuirpy

Fantasy Etudes Albright
Prelude ("Index") / Etude No. 1 "A Real Nice Number"
Etude No. 2 "Pypes"
Etude No. 3 "The Fives for Steve"
Etude No. 4 "Phantom Galop"
Etude No. 5 "Harmonium"
Etude No. 6 "They only come out at night"

Quartette (Allegro de Concert) Florio
Andante
Allegro

XAS Xenakis

4:15 p.m. – W11 Cayuga Saxophone Quartet

Ithaca College, Ithaca, NY

Joel Diegert, 22, Soprano Saxophone
Heidi Bellinger, 21, Alto Saxophone
Allison Dromgold, 21, Tenor Saxophone
Timothy Rosenberg, 21, Baritone Saxophone

Grave et Presto Rivier
Grave
Presto

Blow! Goldstein

Backburner Ticheli

String Quartet in F minor, Op.20, No. 5 Haydn/arr. David Walter
Allegro moderato
Menuetto
Adagio
Finale: Fuga a due Soggetti

4:45 p.m. – W12 The Red Lion Brass

Northwestern University, Chicago, Illinois

Eric Brown, 22, Trumpet
Michael Nitchie, 21, Trumpet
Joel Benway, 24, Horn
Aaron Teitelbaum, 19, Trombone
Elliot Dushman, 21, Tuba

Centone XI Boyce/Reynolds
Allegro non troppo-Allegro assai
Moderato e Dolce
Andante-Allegro

Colchester Fantasy Ewazen
The Rose and Crown
The Marquis of Granby
The Dragoon
The Red Lion

Rounds and Dances Jan Bach
Fanfare
Sarabande
Carioca
Idyl
Gallop

SENIOR SEMIFINAL WIND REPERTOIRE

Saturday May 7, Decio Mainstage Theatre, DeBartolo Performing Arts Center

Each ensemble has submitted a program at least forty minutes in length.
The Jury will have chosen selected movements or segments totaling twenty-five minutes.

Repertoire selections will not be announced.
Please hold applause until the conclusion of the twenty-five minute audition.

9:30 a.m. – W13 The Four Hornsmen of the Apocalypse

Champaign, Illinois

Audrey Good, 19, Horn
Anthony Licata, 27, Horn
Gerald Wood, 30, Horn
Molly Wood, 29, Horn

Suite for Horn Quartet	Bozza
Prelude	
La Chasse	
Chanson Ancienne	
Danse	
Choral	
Fanfare	
Intuitions	Machala
Poco Allegro	
Larghetto espressivo	
Presto	
Fripperies, Book 3	Shaw
Charleston	
Medium	
Ballade	
Twist	
Six Pieces	Tcherepnine
Night	
An Old German Song	
The Hunt	
Dancers	
A Popular Song	
Chorale	

10:00 a.m. – W14 Love for Three Oranges Trio

Eastman School of Music, Rochester, New York

Alison Lowell, 21, Oboe
Casey Gsell, 21, Bassoon
Henry Cheng, 21, Piano

Trio for piano, oboe and bassoon	Previn
Lively	
Slow	
Jaunty	
Trio in A minor for piano, violin and violoncello, Op. 26 Lalo/ transcription by the Trio	
Allegro appassionato	
Presto	
Tres lent	
Allegro molto	

10:30 a.m. – W15 Intrada Winds

Yale University School of Music, New Haven, Connecticut

Conor Nelson, 23, Flute
Karisa Werdon, 23, Oboe
Jeremy Eig, 25, Clarinet
Adam Ward, 23, Horn
Stephanie Corwin, 23, Bassoon

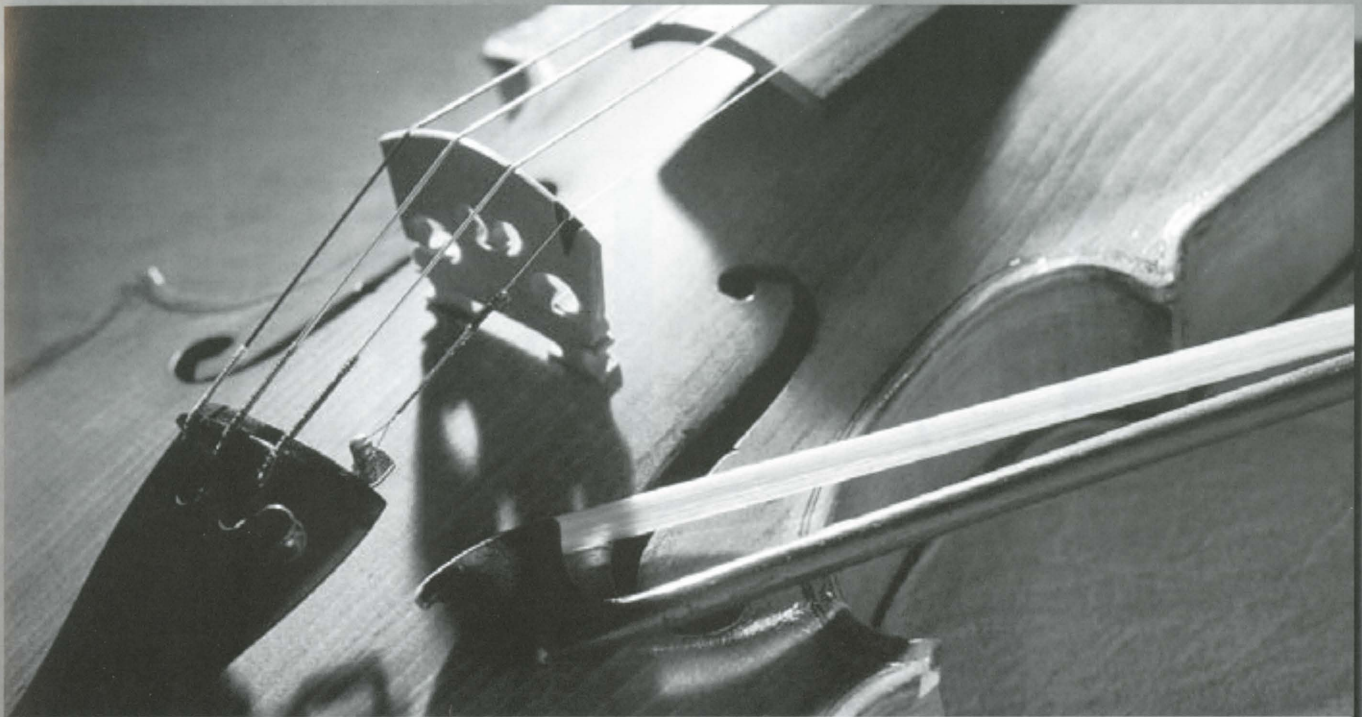
Quintette	Francaix
Andante tranquillo - Allegro assai	
Presto	
Tema - Andante	
Variation 1: Listesso Tempo	
Variation 2: Andantino con moto	
Variation 3: Lento	
Variation 4: Vivo	
Variation 5: Andante	
Tempo di marcia francese	
Quintette (en forme de Choros)	Villa-Lobos
Intrada	Ward
La Nouvelle Orleans	Schifrin

11:00 a.m. – W16 Citizen Quartet

Bowling Green State University, Bowling Green, Ohio

Ryan Muncy, 24, Soprano Saxophone
Yu-Wen Wang, 28, Alto Saxophone
Kristofer Covlin, 25, Tenor Saxophone
Erin Rogers, 25, Baritone Saxophone

Quatuor pour Saxophones, Op. 102	Schmitt
Avec une sage décision	
Vif	
Assez lent	
Animé, sans excès	
XAS	Xenakis
Allegro L. 223 (Kirk. 532)	Scarlatti
Andante L. 257 (Kirk. 206)	Scarlatti
Allegrissimo L. 215 (Kirk. 120)	Scarlatti
Canonic Suite	Elliott Carter
Fanfare. Deciso	
Nocturne. Allegretto con moto	
Tarantella. Allegro	



WHAT CAN
CHAMBER MUSIC
TEACH US ABOUT
INVESTING?



It takes both talent and discipline

The Divine Johnson Group
Colette Johnson
Financial Consultant
431 E. Colfax Avenue, Suite 100
South Bend, IN 46617
colette.johnson@wachoviasec.com
800-348-2323 Toll Free

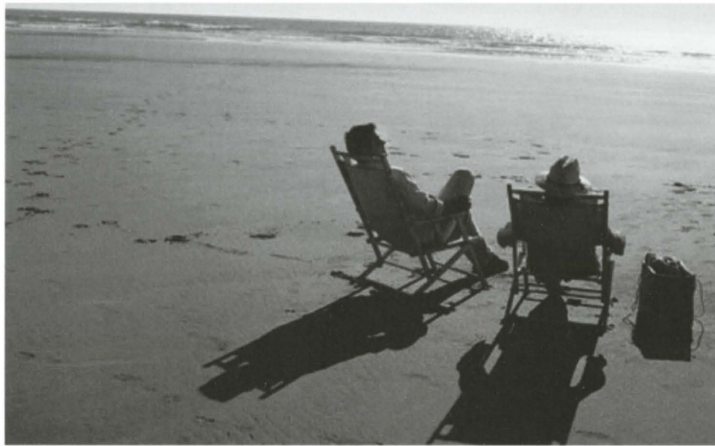


**WACHOVIA
SECURITIES**

Uncommon Wisdom

JUST SAY GO >> DINE >> SHOP

LAKE



Life as it should be lived.



SUBSCRIBE AT
WWW.LAKEMAGAZINE.COM

SENIOR SEMIFINAL STRING REPERTOIRE

Friday May 6, Washington Hall

Each ensemble has submitted a program at least forty minutes in length.
The Jury will have chosen selected movements or segments totaling twenty-five minutes.

Repertoire selections will not be announced.
Please hold applause until the conclusion of the twenty-five minute audition.

9:30 a.m. – S1 Abraxas Quartet

University of British Columbia, Vancouver, British Columbia, Canada

Mira Benjamin, 20, Violin
Elyse Jacobson, 20, Violin
CareyAnn Brady, 27, Viola
Jonathan Thomson, 22, Cello

String Quartet No. 3 Bartok
Prima Parte – Seconda Parte – Ricapitolazione della prima parte – Coda

String Quartet in E-flat Major, Op. 12 Mendelssohn
Adagio non troppo-Allegro non tardante
Canzonetta: Allegretto
Andante espressivo
Molto allegro e vivace

String Quartet in B-flat Major, Op. 76, No. 4 "Sunrise" Haydn
Allegro con spirito
Adagio
Menuetto: Allegro
Finale: Allegro, ma non troppo

10:00 a.m. – S2 Auveron Trio

Austin, Texas

Yi-Chen Wu, 28, Violin
Ching-Fang Wu, 27, Cello
Naoki Hakutani, 32, Piano

Piano Trio in D Major, Op. 70, No. 1 "Ghost" Beethoven
Allegro vivace con brio
Largo assai et espressivo
Presto

Piano Trio in E minor, Op. 90 "Dumky" Dvorak
Lento Maestoso; Allegro quasi doppio movimento
Poco adagio; Vivace non troppo
Andante; Vivace non troppo
Andante moderato quasi tempo da Marcia; Allegretto scherzando
Allegro
Lento maestoso; Vivace

10:30 a.m. – S3 Alianza String Quartet

Yale University School of Music, New Haven, Connecticut

Sarita Kwok, 24, Violin
Lauren Basney, 25, Violin
Ah-Young Sung, 25, Viola
Dmitri Atapine, 24, Cello

String Quartet in G minor, Op. 10 Debussy
Animé et très décidé
Assez vif et bien rythmé
Andantino, doucement expressif
Très modéré - Très mouvementé - Très animé

String Quartet in A minor, Op. 51, No. 2 Brahms
Allegro non troppo
Andante moderato
Quasi Minuetto, moderato - Allegretto vivace
Finale: Allegro non assai

-Break-

11:15 a.m. – S4 Ambrosian Trio

New York, NY

Hsing-ay Hsu, 28, Piano
Sarah Pratt, 27, Violin
Kevork Parsamian, 28, Cello

Piano Trio in C minor, Op. 66 Mendelssohn
Allegro energico e con fuoco
Andante espressivo
Scherzo: Molto allegro, quasi presto
Finale: Allegro appassionato

Piano Trio in A minor Ravel
Modere
Pantoum: Assez vif
Passacaille: Tres large
Finale: Anime

11:45 a.m. – S5 Kashii String Quartet

Cleveland Institute of Music, Cleveland, Ohio

Nathan Olson, 18, Violin
Aaron Requiro, 23, Violin
Jessica Oudin, 21, Viola
David Requiro, 20, Cello

String Quartet in E-flat Major, Op. 74, "Harp" Beethoven
Poco adagio - Allegro
Adagio ma non troppo
Presto - Piu presto quasi prestissimo
Allegretto con variazioni

String Quartet No. 5 in B-flat Major, Sz. 102 Bartok
Allegro
Adagio molto
Scherzo: Alla bulgarese - Trio
Andante
Finale: Allegro vivace

SENIOR SEMIFINAL STRING REPERTOIRE

Friday May 6, Washington Hall

Each ensemble has submitted a program at least forty minutes in length.
The Jury will have chosen selected movements or segments totaling twenty-five minutes.

Repertoire selections will not be announced.
Please hold applause until the conclusion of the twenty-five minute audition.

12:15 p.m. – S6 The Cape Cod Experiment

Eastman School of Music, Rochester, New York

Kitty Cheung, 21, Violin
Heather Braun, 21, Violin
Kimberly Fitch, 21, Viola
David Gerstein, 20, Cello
Jonathan Ware, 21, Piano

Piano Quintet in F minor, Op. 34 Brahms
Allegro non troppo
Andante, un poco Adagio
Scherzo: Allegro
Finale: Poco sostenuto-Allegro non troppo

Piano Quintet (1972/76) Schnittke
Moderato
In Tempo di Valse
Andante
Lento
Moderato pastorale

-Break-

2:00 p.m. – S7 Hyperion String Quartet

The Hartt School, West Hartford, Connecticut

Amanda Brown, 25, Violin
Rachel Brown Englander, 28, Violin
James Arrowsmith, 25, Viola
Jonathan Brin, 25, Cello

String Quartet in C minor, Op. 51, No. 1 Brahms
Allegro
Romance: Poco Adagio
Allegretto molto moderato e comodo
Allegro

String Quartet No. 4 Bartok
Allegro
Prestissimo, con sordino
Non troppo lento
Allegretto pizzicato
Allegro molto

2:30 p.m. – S8 Harding Trio

The Cleveland Institute of Music, Cleveland, Ohio

Rebecca Harding, 22, Piano
Rachel Harding, 22, Violin
Maaike Harding, 20, Cello

Piano Trio in A minor Ravel
Modere
Pantoum: Assez vif
Passacaille: Tres large
Final: Anime

Piano Trio in B flat Major, Op. 8 Brahms
Allegro con brio
Scherzo: Allegro molto
Adagio
Allegro

3:00 p.m. – S9 Delorean String Quartet

Peabody Conservatory, Baltimore, Maryland

Amos Fayette, 19, Violin
Adrienne Geisler, 19, Violin
Alexander Baldock, 20, Viola
Bonnie Obel, 19, Cello

String Quartet in D minor, Op. 76, No. 2 "Quinten" Haydn
Allegro
Andante o piu tosto allegretto
Minuetto: Allegro ma non troppo
Finale: Vivace assai

String Quartet No. 9, Op. 117 Shostakovich
Moderato con moto
Adagio
Allegretto
Adagio
Allegro

-Break-



As teachers, we share a belief in the value of chamber music as an ideal means to communicate the joy of music-making. We promote the exchange of ideas, the benefits of teamwork and of cultivating listening skills – all as vital tools for performing.

*Cavani String Quartet
Ensemble-in-Residence*

cim

CLEVELAND
INSTITUTE
OF MUSIC

David Cerone, President

BY ANY MEASURE, EXCEPTIONAL

The Cleveland Institute of Music is a leading international conservatory that is distinguished by an exceptional degree of collaboration between students and teachers.

String chamber music at CIM is directed by Peter Salaff and includes coaching by the Cavani Quartet. In addition, the distinguished CIM faculty, many of whom are members of The Cleveland Orchestra, coach string, woodwind, brass and percussion ensembles.

Bachelor of Music
Master of Music
Doctor of Musical Arts
Artist Certificate
Artist Diploma
Professional Studies

For further information, contact William Fay, Director of Admission
The Cleveland Institute of Music
11021 East Boulevard
Cleveland, Ohio 44106
(216) 795-3107
Visit our web site at cim.edu

SENIOR SEMIFINAL STRING REPERTOIRE

Friday May 6, Washington Hall

Each ensemble has submitted a program at least forty minutes in length.
The Jury will have chosen selected movements or segments totaling twenty-five minutes.

Repertoire selections will not be announced.
Please hold applause until the conclusion of the twenty-five minute audition.

3:45 p.m. – S10 The Lloyd Carr-Harris String Quartet

McGill University, Montreal, Quebec, Canada

Emmanuel Vukovich, 24, Violin

Aya Ito, 22, Violin

Frederic Lambert, 24, Viola

Christian Elliott, 21, Cello

String Quartet in D minor, Op. 76, No. 2 "Quinten" Haydn

Allegro

Andante o piu tosto Allegretto

Menuetto: Allegro ma non troppo

Finale: Vivace assai

String Quartet in E minor, Op. 59, No. 2 Beethoven

Allegro

Molto Adagio: Si tratta questo pezzo con molto di sentimento

Allegretto

Finale: Presto

4:15 p.m. – S11 Eero Trio

University of Michigan, Ann Arbor, Michigan

Omari Rush, 24, Clarinet

Nathan Jasinski, 29, Cello

Veena K. Kulkarni, 32, Piano

Trio, Op. 28

Allegro

Scherzo: Allegro vivace

Adagio

Rondo: Allegro ma non troppo

Ries

Sieben Balkantänze

Con moto

Rustico

Vivo

Sostenuto e cantabile

Allegro ritmico

Allegretto

Allegro quasi pesante

Tajcevic

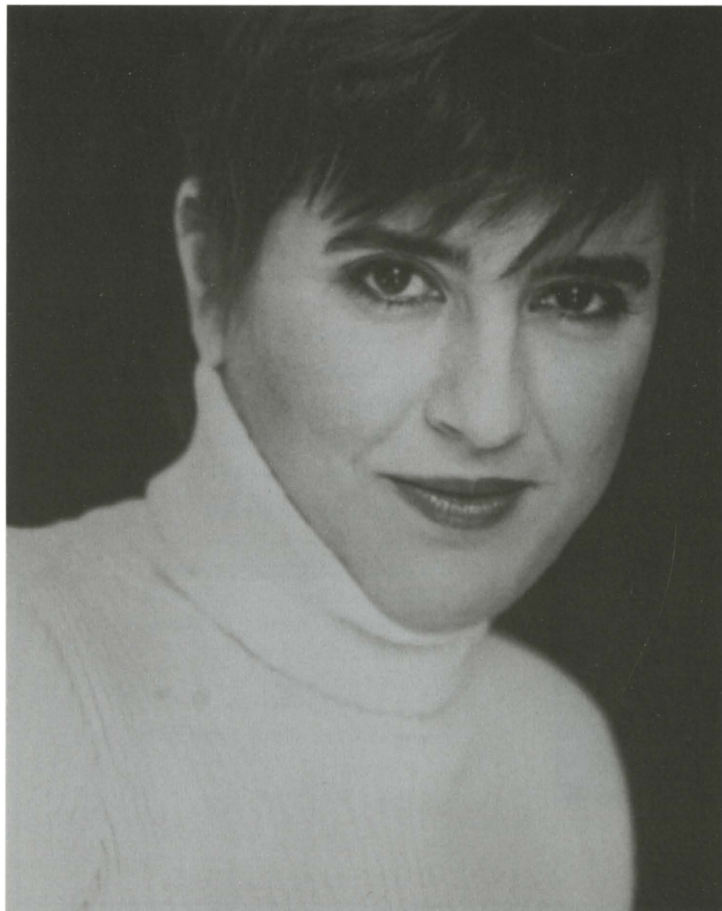
Trio, Op. 3

Allegro ma non troppo

Andante

Allegro

Zemlinsky



SOUTH BEND SYMPHONY

With special guest artist

Nadja Salerno-Sonnenberg, violin

SYMPHONIE FANTASTIQUE

8 PM SATURDAY, MAY 21, 2005

Morris Performing Arts Center

Mozart: *Overture to Così fan tutte*

Brahms: *Violin Concerto*

Berlioz: *Symphonie fantastique*

Concert Sponsor: **Notre Dame Federal Credit Union**

Nadja Salerno-Sonnenberg appears with the
South Bend Symphony Orchestra courtesy of

NDPresents: LIVE AT THE MORRIS.





Congratulations Fischhoff Participants!

MISource[®]

SENIOR SEMIFINAL STRING REPERTOIRE

Saturday May 7, Washington Hall

Each ensemble has submitted a program at least forty minutes in length.
The Jury will have chosen selected movements or segments totaling twenty-five minutes.

Repertoire selections will not be announced.
Please hold applause until the conclusion of the twenty-five minute audition.

9:30 a.m. – S13 Vinca String Quartet

Boulder, Colorado

Anna Brathwaite, 25, Violin

Michelle Lee, 27, Violin

Tina Lee, 29, Viola

Rachel Pomedli, 24, Cello

String Quartet in B-flat Major, Op. 18 No. 6 Beethoven
Allegro con brio
Adagio ma non troppo
Scherzo: Allegro
La Malinconia: Adagio; Allegretto quasi allegro

String Quartet No. 2 in F Major, Op. 92 Prokofiev
Allegro Sostenuto
Adagio
Allegro

10:00 a.m. – S14 Aria Quartet

Chicago, Illinois

Yin Shen, 27, Violin

Netanel Draiblate, 22, Violin

Masayo Higuchi, 27, Viola

Yulian Xu, 39, Cello

String Quartet No. 3, Op. 22 Hindemith
Fugato: Sehr Langsame Viertel
Schnelle Achtel - Sehr energisch
Ruhige Viertel - Stets fließend
Massig schnelle Viertel
Rondo: Gemächlich und mit Grazie

String Quartet in A minor, Op. 13 Mendelssohn
Adagio: Allegro vivace
Adagio non lento
Intermezzo: Allegretto con moto
Presto

10:30 a.m. – S15 Jasper Quartet

Oberlin College, Oberlin, Ohio

J Freivogel, 21, Violin

Evan Few, 22, Violin

Sam Quintal, 21, Viola

Rachel Henderson, 21, Cello

String Quartet in A minor, Op. 13 Mendelssohn
Adagio: Allegro vivace
Adagio non lento
Intermezzo: Allegretto con moto
Presto

String Quartet No. 4 Bartok
Allegro
Prestissimo, con sordino
Non troppo lento
Allegretto
Allegro molto

11:00 a.m. – S16 Parker String Quartet

New England Conservatory, Boston, Massachusetts

Daniel Chong, 21, Violin

Karen Kim, 21, Violin

Jessica Bodner, 21, Viola

Kee-Hyun Kim, 21, Cello

String Quartet "Night Fields" Tower
I
II
III

String Quartet in C minor, Op. 51, No. 1 Brahms
Allegro
Romanze: Poco Adagio
Allegretto molto moderato e comodo
Allegro

CLAIRE GIVENS VIOLINS, INC.

Established 1977

Dealers, Makers & Restorers of Fine Violins, Violas, Cellos & Bows

1004 Marquette Avenue | Suite 205 | Minneapolis, MN 55403

Toll-Free: 800.279.4323 | Phone: 612.375.0708

E-mail: cgivens@givensviolins.com | www.givensviolins.com

THE FUTURE OF MUSIC AND SOUND

We hope you enjoy the inspired performances of the contestants at this prestigious event. Yamaha is proud to support the Fischhoff Competition, as well as professional musicians, students and educators around the world. It is our honor and our mission to provide the very best musical instruments and services possible. Because, like you, we love to create and listen to great music.



©2005 Yamaha Corporation of America www.yamaha.com



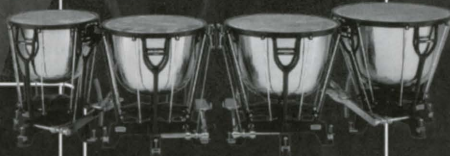
YAMAHA ARTIST SERVICES

Dedicated to meeting the unique needs of artists, performing arts organizations and educational institutions.



CUSTOM SERIES CLARINETS

Versatility and exceptional playability for orchestral players, chamber musicians and soloists throughout the world.



BERLIN-STYLE TIMPANI

The pinnacle of artistry and technology.



ARTIST MODEL C TRUMPET

A fundamental reexamination of trumpet design and manufacturing.



ACOUSTIC & SILENT VIOLINS

"Honor the past, play for the future."

FISCHOFF NATIONAL ADVISORY COUNCIL

The Fischhoff National Advisory Council advises the Fischhoff Board of Directors on matters of a national scope. Each member brings a unique perspective on the nature of the arts in America.



Heidi Castleman is currently Professor of Viola at the Juilliard School of Music. She has taught at the Cleveland Institute of Music, the Eastman School of Music, New England Conservatory, SUNY Purchase, Rice University and Philadelphia Musical Academy. Ms. Castleman has appeared at the Banff Centre, the Perlman Music Program, and the Aspen, Sarasota, Eastern and Blossom Music Festivals. She was also co-founder and viola faculty of the Quartet Program (1970 to 1990). A founding trustee of Chamber Music America, Ms. Castleman was its President from 1983 to 1987. She also served on the board of the American String Teachers Association (ASTA) and currently is on the board of the Perlman Music Program. As a panelist and committee member, Ms. Castleman has served the National Endowment for the Arts, the New York State Council of the Arts, the Music Educators National Conference (MENC), American String Teachers Association (ASTA), the National Association of Schools of Music, the Lila Wallace Readers_Digest Fund and the Andrew Mellon Foundation.



John A. Haynes serves as the Judd and Mary Lou Leighton Director for the Performing Arts at the University of Notre Dame and founding executive director of the Marie P. DeBartolo Center for the Performing Arts. He was formerly President and Chief Executive Officer of the California Center for the Arts. Between 1992 and 1999, Mr. Haynes served as executive director of the Tony Award-winning Children's Theatre Company and School in Minneapolis, MN. He has been active as a national advocate for public arts funding, an NEA panelist, a frequent lecturer on the role of cultural institutions in community building and economic development and a cultural consultant to a variety of private and public entities, including the People's Republic of China. His early career included more than a decade as a program executive for CBS Television Network in New York and Viacom in Beverly Hills, CA.



Richard M. Kovacevich is Chairman and Chief Executive officer of Wells Fargo & Company. He became President and CEO in November 1998, after the Wells Fargo-Norwest merger. In April 2001, he became Chairman. He joined Norwest in March 1986 as Vice Chairman, COO and head of the Banking Group. Before joining Norwest, he was a group executive and member of the Policy Committee at Citicorp and a division general manager at General Mills. He is a member of the Board of Directors of Cargill, Inc., Cisco Systems, Inc., and Target Corporation; the Federal Reserve's Federal Advisory Council, California Business Roundtable; Governor Arnold Schwarzenegger's California Commission for Jobs and Economic Growth; Chairman of San Francisco's Committee on JOBS; Vice President and member of the Board of Governors of the San Francisco Symphony; Vice Chairman and member of the Board of Trustees of the San Francisco Museum of Modern Art. He graduated from Stanford University, where he earned his M.B.A. and his bachelor's and master's degrees in industrial engineering.



Michael Fine is one of today's leading independent classical recording producers. The GRAMMY Award winning producer was formerly Vice President of Artists and Repertoire at Deutsche Grammophon. Fine's productions have won most of the world's most prestigious awards for recorded music including the Grammy, Grand Prix du Disque, Deutsche Schallplatten, Edison Prize, INDIE Award and the Gramophone Award. In addition to his work in the studio, Michael Fine has lectured at music schools and conservatories around the world.



Photo by Sollier

As cellist for 26 years of the Cleveland Quartet, **Paul Katz** appeared in more than 2,500 concerts on four continents and made 70 recordings which earned 11 GRAMMY nominations and two GRAMMY Awards. The members of the CQ were the first classical artists ever to appear on the GRAMMY Awards telecast. In addition to his studies with Bernard Greenhouse, he was a student of Gregor Piatigorsky, Janos Starker and Leonard Rose. In September 2001, he joined the faculty of the New England Conservatory of Music where he teaches cello and mentors a training program for young professional string quartets. In 2001, he was awarded Chamber Music America's highest honor, the National Service Award, given for a lifetime of distinguished service to the field of chamber music. The American String Teachers Association named Paul Katz their "Artist-Teacher 2003," and Indiana University awarded him its coveted *Chevalier du Violoncelle* for distinguished achievements and contributions to the world of cello playing and teaching.



Leon Pascucci is Chairman of Grenadilla, Inc, a financial services company specializing in the music industry, and is the former Chairman, President and CEO of G. Leblanc Corporation. He is a Board member of the Music Distributors Association, as well as the Kenosha Area Business Alliance; President, Kenosha Visiting Nurse Association; member of the Fine Arts Advisory Committee, Carthage College; member, Board of Visitors, Berklee College of Music, and Past President, Kenosha Symphony Orchestra.



Massimo Mercelli is a concert flutist and Artistic Director and Founder of the EMILIA ROMAGNA FESTIVAL in Italy. Since 2001, he has been a member of the Directive Committee of the European Festival Association. He has also been a member of the panel of judges in important international competitions such as the Jean-Pierre Rampal of Paris, the Geneva Competition, the Concert Artists' Guild of New York and the Fischhoff National Chamber Music Competition. In 2004, he performed with Krzysztof Penderecki and Philip Glass, among others. Mr. Mercelli performs regularly in the most important venues, such as Carnegie Hall (New York), the Gasteig (Munich), Teatro Colon (Buenos Aires), Victoria Hall and St. Martin-in-the-Fields (London), Parco della Musica (Rome), Filarmonica of Saint Petersburg, and at major music festivals in Lubljana (Berlin), Santander, St. Petersburg, Rheingau and Jerusalem, as well as the Bonn Beethoven Festival and Festival Cervantino.



Photo by Herbert Ascherman, Jr.

**In Memoriam:
Karl Haas, 1913-2005**

Long-time classical music radio personality Karl Haas, host of *Adventures in Good Music*, heard on radio stations throughout the world, died Sunday, February 6, 2005, in Detroit. He was 91. His program, which brought musical enjoyment to millions of listeners, was for many years the most listened to classical music radio program in the world. Traditionally it has been the highest rated program on WCLV.

In 1991, Dr. Haas received the National Endowment for the Humanities' Charles Frankel Award, which was presented to him by President Bush. He was twice the winner of the prestigious George Foster Peabody Award. In addition to his daily broadcasts, Dr. Haas wrote a book, *Inside Music*, now in its 10th printing, and was the producer of three compact disks: *The Romantic Piano, Song and Dance*, and *The Story of the Bells*. He appeared regularly as a recitalist, lecturer and conductor throughout the country.

We are grateful for Karl Haas' service on Fischhoff's National Advisory Council and for his endorsement of Fischhoff's programs and the young musicians of the competition. We will all miss him.

FISCHOFF BOARD OF DIRECTORS 2004-2005

OFFICERS

Doug Mick, President & Fischhoff Society
Marian Emery, Vice President
& Organizational Development
Tom Vetne, Secretary
David Aranowski, Treasurer
Charlotte K. Ford, Director Emerita
Thomas Rosenberg, Artistic Director
Bernard E. Edwards, Jr., Education

Richard Bailey
Margie Collier
Patricia Dayton
June H. Edwards
Shirley Geraghty
Alfred Guillaume, Jr.
William Knight
Christopher Kramer
Timothy McTigue
Carol A. Mooney
Marianne Peters
Mary E. Pugel

FISCHOFF VOLUNTEERS

One of the major strengths of Fischhoff is our host of extraordinary volunteers. Without these dedicated people, we would not be able to provide the personal care and attention to the talented young musicians who come to our community to compete.



CALIENTE! Volunteers

Thank you to the following 2005 Fischhoff Competition Volunteers:

Pam Allen	Pam Chipman	Elizabeth Garcia	Nancy Menk	Jerry Strabley
Julie Anderson	Lindsey Collier	Shirley Geraghty	Jon Meyer	Cyndi Sykes
Dea Andrews	Margie Collier	Bonnie Green	Elaine Mick	Chris Temple
David Aranowski	Heather Correll	Elizabeth Grondin	Karen Mick	Maggie Thomas
Bill Atwood	Cami Cress	Emilie Grondin	Norma Jean Nelson	Sara Thomas
Jan Atwood	Louis Davidson	Michelle Grondin	Jerry Nurenberg	Tracey Thomas
Mary Sue Austin	AnneMarie Dawson	Eve Hardin	Mary Nurenberg	Elaine Tracy
Terry Austin	Pat Dayton	Patricia Collins Jones	James O'Rourke	Don Trull
Tammy Bailey	Aaron Divine	Mark Kelley	Marianne Peters	Kay Trull
Rick Bailey	Paul Divine	Chris Kramer	Nancy Jo Pinney	Beverly Tucker
Carol Baranko	Becky Dodd	Valerie Kramer	Helen Pollak	Helen VanGundy
Frank Baranko	Bernie Edwards	Johanna Larson	Randy Rompolo	Thomas Vetne
Jackie Batill	June Edwards	Elaine Lee	Alberta Ross	Teresa Brouillette Wade*
Ruth Ann Bauert	Marian Emery	Lawrence Lee	Martha Rukavina	Sam Waterson
Cindy Berryman	Fritz Ettl	Juliana Lockman	Carol Bullock Russell	Lisa Wehrly
Korynne Bolt	Julie Ettl	Rachaelle Lubinski	Scott Russell	Marie Weiss
Barbara Books	June Ferguson	Frances Maffitt	Judy Simcox	Eleanor Wiswell
Alan Camren	Priscilla Filos	Gail Marti	Peggy Soderberg	Nick Yasillo
Pam Camren	Carolyn Garber	Ron May	Jackie Strabley	Susan Yasillo

Special thanks to the University of Notre Dame campus individuals and organizations for their invaluable help with Competition arrangements:

Harriet Baldwin & Center for Continuing Education Staff
 Tom Barkes, DeBartolo Performing Arts Center
 Ryan Berndt, Department of Music
 Karen Buranskas, Department of Music
 Jaime Cripe, Eck Visitors' Center
 Paul Eddy, Sacred Heart Parish
 Greta Fisher & Washington Hall Staff
 John Haynes, DeBartolo Performing Arts Center
 Lt. Jeff Korros, Security/Police Department
 Mary Pugel, Office of the Provost
 MaRinda Moord, Food Services-Catering
 Les Niedbalski, Security/Police Department
 Sarah Prince, DeBartolo Performing Arts Center
 Kelly Sanford, DeBartolo Performing Arts Center
 Jacqueline Schmidt, DeBartolo Performing Arts Center
 Denise Sullivan, DeBartolo Performing Arts Center
 Dawn Templeton, Office of the Registrar
 Kevin Wangler, Department of Music

The following individuals and organizations also deserve special thanks for their tremendous assistance:

Ruth Ann Bauert, Merchandise Supervisor
 Jennifer Phillips, Barnes & Noble, Mishawaka, IN
 Lisa & Mike Roth, Shirks Piano & Organ Co., Mishawaka, IN
 Saint Mary's College, Steinway piano for Washington Hall
 Washington High School National Honor Society, South Bend
 Community School Corporation

We deeply appreciate the following community organizations that provided rehearsal space for Fischhoff ensembles:

Eck Visitors' Center, University of Notre Dame
 First United Methodist Church, South Bend
 Little Flower Catholic Church, South Bend
 Department of Music, Saint Mary's College
 Department of Music, University of Notre Dame
 Moreau Seminary, University of Notre Dame
 Sacred Heart Parish Center, Notre Dame
 Woodwind & Brasswind, South Bend

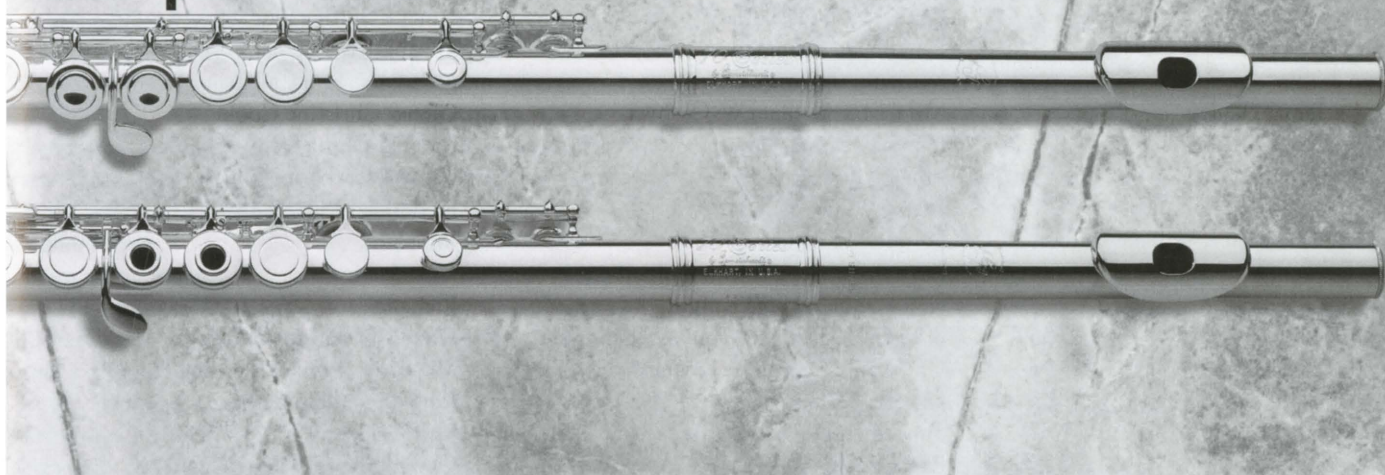
Thank you to the following campus organizations for hosting lunch-time concerts:

Greenfield's Café
 Hammes Notre Dame Bookstore
 Main Building
 Sorin's at the Morris Inn

*We would like to formally thank Teresa Brouillette Wade for all of her past service to Fischhoff as its former Competition Manager during the growing years. She represents just one of a host of community members who have quietly helped Fischhoff grow throughout the years. We now count Teresa among our faithful volunteers. Thank you Teresa!

Here's where artistry meets technology.

Introducing the 70 Series from Gemeinhardt.



Every generation improves on the last. So just imagine what we've done with a four-generation head start. Introducing the "70 Series" flutes from Gemeinhardt. Blending handcrafted artistry with the latest advances in technology to offer serious flutists instruments with both superior acoustic properties and exceptional response.

These new flutes offer the kind of attention to detail that ensures quieter action and quicker response. And that's only the beginning. With several available configurations and options, the "70 Series" is designed to meet the unique demands of today's most discerning musicians, from student to professional.

Extraordinary standards. Exceptional craftsmanship. A history of Kurt Gemeinhardt tradition. Experience it for yourself today.

Gemeinhardt[®]
www.gemeinhardt.com

THE FISCHOFF SOCIETY

The Fischoff National Chamber Music Association appreciates the generous support that comes from private sources. The following individuals made contributions from April 17, 2004 - April 5, 2005. Those making contributions after this date will be listed in next year's program book.

Memorials and Honors

In Memory of G. Walter Erickson, MD and
In Honor of Molly Gebrain by Martha A. Erickson
In Memory of Joseph E. Fischoff by Terry
& Mary Sue (Fischoff) Austin
In Memory of Kristin Fiske by Linda & George Wehrle

Permanent Funding

Endowment of the Barbara Shields Byrum Senior String Bronze Medal

Mr. & Mrs. W.S. Shields
& Barbara Shields Byrum

Forté Campaign

Mr. & Mrs. W.S. Shields
& Barbara Shields Byrum
Taylor Lewis-Garber & William Garber

(Fischoff has established endowment funds in the Community Foundation of St. Joseph County and the Elkhart County Community Foundation.)

Annual Gifts

(Fischoff Society recognition begins at the \$100 level.)

Guarantor (\$5,000 and up)

Dennis & Virginia Bamber
Doug & Karen Mick
Elizabeth Naquin Borger & Thomas Borger

Sustaining Fellow (\$2,000 to \$4,999)

Kathryn Barbin*
Richard & Tamara Bailey
Mr. & Mrs. Roger Benko
Paul & Ann Divine
Dr. Lawrence & Carolyn Garber
Taylor Lewis-Garber & William Garber
Shirley Geraghty
Rex & Alice Martin
Ray & Julie Plagens
Emese Ronay Rivera*
Mr. & Mrs. William S. Shields
Reg & Barbara Wagle

Encore Club (\$1,000 to \$1,999)

Paul & Ann Divine*
Mr. & Mrs. Burt Ford
Dr. & Mrs. Alfred Guillaume, Jr.
Dr. Paul & Dr. Diane Herman
Mr. & Mrs. Edward Hiler
Mrs. Richard Huizinga
Yatish Joshi & Louise Addicott
Hurbert & Judith Kuzmich
Kurt & Christine Kruggel
Joseph & Gail Mancini
Dr. Price, Marijke, Kirsten, & Marc Niles
Doug & Karen Mick*
Irwin & Andra Press
Kitty Rose & Ed Everett
Dr. Lynn Stettbacher
Mrs. Marjorie Wilson

Ovation Club (\$500 to \$999)

David & Ellen Aranowski
Dr. & Mrs. Tino Aquino
David & Torii Beatty
Brian & Jeannette Brady
Pam & Dan Chipman
Margaret & Chris Collier
Mr. & Mrs. William W. Cushwa
James & Patricia Dayton
June H. Edwards
Bernard Edwards, Jr.
Patricia Geoffroy
Dr. Stephen & Kathleen Hollenberg
Drs. William & Julia Knight
Brenda E. Knowles & Paul Kochanowski
Christopher & Valerie Kramer*
Claudia Manning
Timothy & Deirdre McTigue
Rev. Ronald J. Nuzzi
Wendy Page
Dr. Timothy & Marianne Peters
Tom Rosenberg & Sarah Morrisette
Vincent Rougeau
James F. Shea
Gordon & Esther Start
Jo Ann Wittenbach

Signature Club (\$250 to \$499)

Robert & Pat Abene
Mrs. George Aranowski
Catherine Wells-Bentz & John Bentz
James & Shirley Blue
Elizabeth & Thomas Borger*
Mr. & Mrs. Tom Callahan
Glen & Christine Cook
Loren & Gloria Daily
Leroy & Catherine Ellgass
Frederick Ettl
John Fink
Jack Fleming
Richard Ford
Dr. & Mrs. Milton E. Gibson
Mr. & Mrs. Ronald Hawkins
John & Dian Holdeman
Rita Kottkamp
Christopher & Valerie Kramer
Dr. Charlotte Kroeker
Don & Allison Lamont
Ron May
Larry & Barbara McHugh
Carol Mooney & George Efta
Mary Pugel
David Raymond
Patti Reinhardt
Mr. & Mrs. Adrien Ringuette
Randolph Rumpola
Mr. & Mrs. Joseph Ruppe
Maria & George Sereiko
Robert & Joyce Wegs

*in-kind donations



INDIANA ARTS COMMISSION
REGIONAL PARTNERS
Connecting people to the arts

Provided with support from Community Foundation of St. Joseph County, Inc., the Indiana Arts Commission, a state agency, and the National Endowment for the Arts, a federal agency.



Friends of the Fischhoff (Up to \$99)

Dr. & Mrs. Kent R. Alderton
Mr. & Mrs. William Alert
Dea Andrews
Frank & Carolyn Antonovitz
Shirley & Jack Appleton
Mr. & Mrs. Thomas Athanas
Nicholas Ayo, CSC
Janet Badtke
Mr. & Mrs. Ernest Barr
Susan Bates
Marzy & Joe Bauer
Joseph C. Beck
Wishart & Mary Bell
Mr. & Mrs. Dennis Beville
Roger Bock
Kathy Bjorseth
Mr. & Mrs. Bruce Bon Durant
Marilyn Brown
Mary Jane Buzolich
Pam & Allan Camren
Roy & Connie Chalko
Chien Chun Chang
Tom & Sue Christensen
Susan Clements
Harry Coffman
Gloria & Dick Cooper
George C. Coquillard
Mr. & Mrs. Michael Demont
Mr. & Mrs. Thomas Drake
Susan & Ken Ellington, III
Dr. & Mrs. William Fairley
Priscilla Filos
Dr. & Mrs. Lloyd France
Mr. & Mrs. William Freivogel
Mr. & Mrs. Gerald Frieling, Jr.
Jessica Fulton
Jennifer Garrett
Ruth Gates
Stephen & Ursula Gifford
Dr. April Fallon
& Dr. Rama Rao Gogineni
Mr. & Mrs. Larry A. Greer
Dr. Harriett Hamer Cassell
Dr. & Mrs. Roger Hargreaves
Wendy Harman
Shelley & Robert Heiden
Martin & Angela Heirty
Carol Hoffman
Mr. & Mrs. Thomas L. Holmes
Jonathan & Brenda Horvath
Eugene and Jeanette Huang
Dr. Joyce & Joe Jilek
Mary H. Jones
Mr. & Mrs. Wellington D. Jones III
Mr. & Mrs. Rikki Kain
Mr. & Mrs. William Kaster
Mark & Marty Kelley
Paul & Margaret Kenney
Mr. & Mrs. Douglas Kinsey
Catherine Koscielski
W. Peter Kurau
Mr. & Mrs. Louis S. LaPierre
Erin Lesser
Rachaelle Lubinski
Denise Borton Luby
Phoebe Jo Lykowski
Karen MacDonald
Mr. & Mrs. William Magrane
Karen Marsman
Charles Mason
Birdie & Jerry McElroy
Mr. & Mrs. Anthony N. Michel
Mr. & Mrs. John W. Mihelich
Lisa Miller
Mr. & Mrs. Ed Minnick
Virginia Morrow
Mr. & Mrs. Douglass Myers
Harriet S. Noble
Dr. Elliott & Shirley Nordgren
Lynn Orman
Peter & Nancy Owsianowski
Dr. Philip Peter
Mr. & Mrs. Marc Petty
Dr. & Mrs. Stephen Phillips
Martha Pickrell
Mr. & Mrs. Barth Pollak
Charles F. Quinn
Irene Rapp
Hiroko Schwartz
Mr. & Mrs. John Raster
Mr. & Mrs. William Rettig
Mr. & Mrs. James Rimmel
Mrs. Alberta Ross
Barbara A. Schubert
Dr. & Mrs. William D. Shepard
Mr. & Mrs. Neil Silver
Mr. & Mrs. Timothy Smith
Mr & Mrs. Andrew Somme
Paul & Sara Spasic
Marie Speziale
Mr. & Mrs. Charles Stanton
Mr. & Mrs. Richard Stauffer
Jacqueline Stevens
Dick & Joyce Stifel
Mr. & Mrs. Tod Stillson
Rev. Walter & Elizabeth Stitt
Mr. & Mrs. Don Stone
Phyllis K. Stutzman
Marjorie M. Swift
Larry & Janet Thompson
Dr. & Mrs. Jack Turncok
Gina Valvano
Mr. & Mrs. Loren Van Oort
Mr. & Mrs. Merlin Wendling
Mr. & Mrs. Wade Wiley
Clarence & Mary Witskin
Mr. & Mrs. Marvin Wittkopf
Clara Wooley
Gloria Wolvos
Nicholas & Susan Yasillo

Salon Club (\$100 to \$249)

John R. Aaker
Charles & Teresa Allen
Eve A. Arnett
Thomas & Nina Barbour
Brad & Donna Beutter
Beryl & Barbara Boss
Sally Bostick
Travis & Rosemary Budd
Karen Buranskas
Heidi Castleman & David Klein
Elizabeth Cullity
Allan & Karen Dennis
Dr. & Mrs. Frank Deogracias
Sue Derickson
Roger & Carol Dooly
Bettie L. Dippo
Mary Dunn
Georges Enderle
Renee & Michael Falzone
George & Gladys Fischhoff
John & Rita Fleming
Bill & Leslie Gitlin
Richard & Martha Greulich
Dr. & Mrs. George M. Haley
Carolyn Hammerschmidt
Fred & Nancy Hawkins
Eugene & Alice Henry
Charles & Ann Hillman
Anne Jordanich
Dr. Marie Garritson Jureit
& Calvin Jureit
Jonathan & Edwina Kintner
James & Ann Kolata

Ray & Peg Larson
Michael & Karen Lemmon
Philip B. Lockhart
Mayor Stephen
& Margaret Luecke
Mr. & Mrs. Charles Mattes
Laurence & Barbara McHugh
Nancy Menk
Dr. Michael & Laura Method
Yong Hi Moon
Ardys N. Morgan
Lavon & Monica Oke
John & Cordila Owings
Dr. & Mrs. Gary Pippenger
Dr. Y. Pasertwanitch
Juan & Emese Ronay Rivera
Mr. & Mrs. Robert Rosenfeld
Charles & Carol Rosenberg
Eugene Rousseau
Mr. & Mrs. David Sparks
Andrea Mather-Stowe
& Perry Stowe
Mr. & Mrs. Frederick Syburg
Dr. Robert & Milana Tomec
Mr. & Mrs. Tom Vetne
Teresa Brouillette Wade
Robert H. Waechter
James & Carole Walton
Reg Watkinson
Linda & George Wehrle
Dolores & Richard Wilson
Linda & Ron Witchie
Dr. Harley Yoder
& Dr. Starla Graber

CORPORATE AND FOUNDATION BENEFACTORS

The following organizations made contributions from April 17, 2004 - April 8, 2005. Those making contributions after this date will be listed in next year's program book.

Corporate & Foundation Gifts

Richard Harrison Bailey/The Agency — national poster & outdoor design concepts*
NiSource Charitable Foundation — Fischhoff Competition sponsorship
Florence V. Carroll Fund — Florence V. Carroll Junior Scholarship Division — endowed
SBC Foundation — technical capacity
Frederick S. Upton Foundation — national competition & general operating support
Elnora Hartman Stickley Scholarship Fund — Fischhoff's Mentoring Project & Artist-of-the-Month scholarships
Amateur Chamber Music Players Foundation — Competition, Junior Quarterfinal Division
Community Foundation of St. Joseph County — Leighton Award for Nonprofit Excellence 2005 Special Recognition Award — national competition & general operating support
Mossberg & Company, Inc. — national competition poster & event printing*
Conn-Selmer, Inc. — national competition poster sponsor
Fox Products Corporation — national competition poster sponsor

Permanent Funding (Endowment)

Florence V. Carroll
Junior Prize Division

Corporate Futurist (\$10,000 to \$50,000)

Community Foundation of St. Joseph County, 2005 Leighton Award for Nonprofit Excellence-Special Recognition Award
Indiana Arts Commission & The National Endowment for the Arts & the Community Foundation of St. Joseph County
National Endowment for the Arts —Challenge America
NiSource Charitable Foundation
Richard Harrison Bailey/The Agency*
University of Notre Dame*

Corporate Guarantor (\$5,000 to \$9,999)

Frederick S. Upton Foundation
Henkels Lecture Series, College of Arts and Letters, University of Notre Dame
Merrill Lynch
Mossberg & Company, Inc.*
SBC Foundation

Corporate Sustaining Fellow (\$2,000 to \$4,999)

AM General Corporation
Amateur Chamber Music Players Foundation, Inc.
Baker and Daniels
Boling Vision Center*
Burkhart Advertising, Inc.
Conn-Selmer, Inc.
Eastern Michigan University
Elnora Hartman Stickley Scholarship Fund
GTA Container
Gemeinhardt Music
Genesis Program and the City of Elkhart
Heartland Arts Fund
National City Bank
Stanz Foodservice, Inc.
The Woodwind & Brasswind
Yamaha Corporation of America
Eastern Michigan University

Fischhoff has established funds in the Community Foundation of St. Joseph County and the Elkhart County Community Foundation.

The Woodwind & Brasswind — national competition poster sponsor
Gemeinhardt Company, Inc. — national competition poster sponsor
G. LeBlanc Corporation — national competition poster sponsor
The Music Group (Buffet Crampon & Paesold) — national competition poster sponsor
Yamaha Corporation of America — national competition poster sponsor
Richard & Tamara Bailey — juror dinner*
Burkhart Advertising, Inc. — Grand Prize Winner's Play-Off Concert Gala Reception
Shirk Piano & Organ Company — pianos*
Saint Mary's College — Steinway piano*
South Bend Tribune — "Artist-of-the-Month" features*
Elkhart Truth — "Artist-of-the-Month" features*
The Goshen News — "Artist-of-the-Month" features*
Chamber Music Minnesota — Music da Camera national public access television series*
University of Notre Dame & the Marie P. DeBartolo Performing Arts Center — office space, competition & pianos*
**in-kind contributions*

Corporate Encore Club (\$1,000 to \$1,999)

The Borger Group, LLC
Barnes & Noble
Clark Food Service, Inc.
Crowe Chizek
Dogwood Fine Arts Festival, Inc.
Fifth Third Bank
Fox Products Corporation
Gibson Insurance Group & The Hartford
G. LeBlanc Corporation
Graffis Furniture Company
Graffis Furniture Company*
Divine-Johnson Group, Wachovia Securities
Goshen College
Jones Obenchain, LLP
KeyBank National Association
Marshall County Community Foundation
Mostly Music, NEIU
Norton Building Concert Series
The Morris Inn
The Music Group
Plymouth Arts Commission, Inc., and Encore Performing Arts
South Bend Community School Corporation Title I

Corporate Ovation Club (\$500 to \$999)

Anthony Travel*
Bard College
Elkhart County Community Foundation
Fairmont Home
Junior League of South Bend, Inc.
Oberlin Conservatory of Music
Saint Mary's College*
Shirk Piano & Organ Co.*
Sorins at the Morris Inn*
St Joseph Capital Bank
Summer Shakespeare
Superior Seafoods*
Victorian Pantry*
The Woodwind & Brasswind*
WVPE-JAM*

Corporate Signature Club (\$250 to \$499)

The Boston Foundation
Cleveland Institute of Music
Eastman School of Music
1st Source
Framed Custom Picture Framing*
Interlochen Center for the Arts
Lake Magazine
Mannes College of Music
McCaffery Lighting*
Marie DeBartolo Performing Arts Center*
New England Conservatory of Music
Persian Rug Gallery*
Plymouth Country Club
Shepherd School of Music, Rice University
San Francisco Conservatory of Music
South Bend Symphony Orchestra
The Stanley Clark School
Summer Shakespeare* at Notre Dame
Trinity School
Thorton Gardens*
University of Michigan School of Music
WFMT-FM, Chicago*

Corporate Salon Club (\$100 to \$249)

Art Hansen Photographic*
Chamber Music at the Barn
Claire Givens Violins
Culinary Connection*
George and Fran Haley Philanthropic Fund of the Community Foundation of St. Joseph County
The Frame Factory*
Stephenson's Marketing Concepts*
Wabash College
Woodcox Building Contractor, Inc.

**in-kind contributions*

"The redesigned keywork is ergonomically superior; ultimately, it may extend a player's career."

Larry Combs

Opus II clarinet
Principal clarinetist,
Chicago Symphony Orchestra



LEBLANC 


G. Leblanc Corporation • www.gleblanc.com

Click on:



SOUTH BEND SYMPHONY ORCHESTRA

2005-2006 SEASON



THE EXPERIENCE
OF A LIFETIME
BEGINS
OCTOBER 8TH.

FOR TICKETS CALL
(574) 232-6343



WWW.SOUTHBENDSYMPHONY.COM



OBOES
ENGLISH HORNS
BASSOONS
CONTRABASSOONS

FOX PRODUCTS CORPORATION

SOUTH WHITLEY, INDIANA 46787 • U.S.A.

Telephone: (260) 723-4888

Fax: (260) 723-6188

FISCHOFF ALUMNI: WHERE ARE THEY NOW?

The Spotlight is on.....



Jupiter String Quartet

Winners of three major competitions in one year:
2004 Fischhoff National Chamber Music Competition, Grand Prize Winner
2004 Banff International String Quartet Competition
2005 Young Concert Artists International Auditions

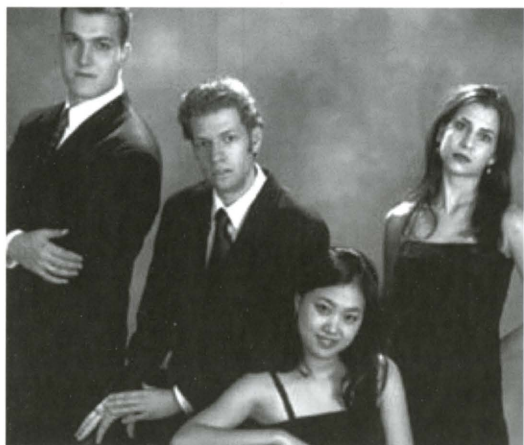
2004-05

Young Concert Artists, three years of management
New England Conservatory, Professional String Quartet Training Program
The Kennedy Center, Washington D.C.
Isabella Stewart Gardner Museum, Boston

Upcoming Events

New York concert, sponsored by Paul A. Fish Memorial Prize
Canadian recital tour, sponsored by The Banff Center
Emilia Romagna Festival, Italy, sponsored by the Fischhoff National Chamber Music Association

Management: Young Concert Artists, Inc.



Biava String Quartet

2003 Naumberg Chamber Music Award
2003 London International Quartet Competition, 3rd Prize
2003 Young Concert Artists International Auditions, 2nd Prize
2001 55th National Coleman Chamber Music Competition, Saunderson Prize,
2001 Fischhoff National Chamber Music Competition, 2nd Prize

2004-05

Teaching Assistants for the Tokyo Quartet, Yale University
Itzhak Perlman Chamber Music Workshop
Library of Congress, Robert Mann tribute performance
Los Angeles da Camera Society
Kreeger Museum, Washington D.C.
Lincoln Center, Alice Tully Hall Debut
Concert Tours of Seoul, South Korea, France and London

Upcoming Events

Norfolk Chamber Music Festival
Martha's Vineyard Chamber Music Society

Management: MCM Artists Worldwide
www.biavaquartet.com



Triton Brass

2003 Senior Division Silver Medal Winner, Fischhoff National Chamber Music Competition

2004-05

Artists-in-Residence, Boston College, Chestnut Hill, MA
Concert Artist Guild Competition, Semi-Finalist
Brass Quintet Competition in Lyon, France

Upcoming Events

2005 Faculty, Boston University Tanglewood Institute (BUTI)
2005 Faculty, Atlantic Brass Quintet International Summer Seminar, Boston College

contact: www.tritonbrass.org

HISTORY OF FISCHOFF WINNERS

Senior Division Grand Prize (Grand Prize created in 1987)

2004 Jupiter String Quartet, Boston, MA
 2003 verklärte quartet, Cleveland, OH
 2002 Quintet Attacca, Chicago, IL
 2001 ninth circle saxophone quartet, Ann Arbor, MI
 2000 Fry Street Quartet, Hickory, NC
 1999 Corigliano String Quartet
 1998 Avalon Quartet
 1997 Elm City Ensemble
 1996 Miro String Quartet
 1995 Zephyros Wind Quintet
 1994 The Arianna String Quartet
 1993 Amernet String Quartet
 1992 North Coast Trio
 1991 Griffon String Quartet
 1990 Trio Wanderer
 1989 Miami String Quartet
 1988 Lafayette String Quartet
 1987 Harrington String Quartet

Senior String First Prize

2004 Jupiter String Quartet, Boston, MA
 2003 verklärte quartet, Cleveland, OH
 2002 Chiara String Quartet, Grand Forks, ND
 2001 Eusia St. Qt., Chicago, IL
 2000 Fry Street Quartet, Hickory, NC
 1999 Corigliano String Quartet
 1998 Avalon String Quartet
 1997 Elm City Ensemble
 1996 Miro String Quartet
 1995 Sausalito St. Qt.
 1994 Arianna St. Qt.
 1993 Amernet String Quartet
 1992 North Coast Trio
 1991 Griffon String Quartet
 1990 Trio Wanderer
 1989 Miami St. Qt.
 1988 Lafayette St. Qt.
 1987 Harrington St. Qt.
 1982 Ridge String Quartet

Senior String Second Prize

2004 Calder Quartet, Los Angeles, CA
 2003 Ensō String Quartet, Houston, TX
 2002 Xanadu Trio, New York, NY
 2001 Biava St. Qt., Cleveland, OH
 2000 New England Conservatory Honors String Quartet
 Boston, MA
 1999 Basmati String Quartet
 1998 Coolidge String Quartet
 1997 Lipatti String Quartet
 1996 Montagnana St. Qt.
 1995 Anacapa String Quartet
 1994 Plymouth String Quartet
 1993 Assai String Quartet
 1992 Rackham String Quartet
 1991 Stony Brook Grad. Trio
 1990 Rosalyra Quartet
 1989 Aureole Trio
 1988 Augustine Quartet
 1987 Lafayette String Quartet
 1982 Ambrogio Trio

Senior String Third Prize

2004 Rothko String Quartet, New York, NY
 2003 The Harding Trio, Cleveland, OH
 2002 Jung Trio, New Haven, CT
 2001 Proteus 5, New York, NY
 2000 Gotham Quartet, Rice University, Houston, TX
 1999 In Flight 3
 1998 Brutini String Quartet
 1997 Avalon String Quartet
 1996 Pacifica String Qt.
 1995 Pacifica String Qt.
 1994 Trio Selka
 1993 Hawthorne String Qt.
 1992 Catalina Trio
 1991 Noc-Noc Quartet
 1990 Westbrook String Qt
 1989 Powell String Quartet
 1988 Aramis String Quartet
 1987 (not published)
 1982 (no 3rd prize)

Senior Wind First Prize

2004 Trio di Colore, Bloomington, IN
 2003 Arizona State University Saxophone Quartet,
 Tempe, AZ
 2002 Quintet Attacca, Chicago, IL
 2001 ninth circle saxophone quartet, Ann Arbor, MI
 2000 Lithium Saxophone Quartet, Bowling Green, OH
 1999 The Extension Ensemble
 1998 Catalyst (Sax Quartet)
 1997 Canterbury Brass
 1996 Eighth Blackbird
 1995 Zephyros Wind Quintet
 1994 Battell Quintet
 1993 Hanson Wind Quintet
 1992 Michigan State Sax Qt.
 1991 Black Swamp Sax Qt.
 1990 Interstate Brass
 1989 Taft Woodwind Quintet
 1988 MSU Grad. Sax Qt.
 1987 Texas Sax Qt.
 1982 Quintessential Brass

Senior Wind Second Prize

2004 Scarborough Trio, New York, NY
 2003 Triton Brass Quintet, Boston, MA
 2002 Syrinx Saxophone Quartet, Evanston, IL
 2001 Red Onion Sax. Qt., IL
 2000 Vento Chiaro, Longy School of Music,
 Cambridge, MA
 1999 Juniper Quintet
 1998 Metropolis Trombones
 1997 National Saxophone Quartet
 1996 Four Corners Sax Qt.
 1995 N. Illinois Sax Qt.
 1994 Palo Verde Brass Work
 1993 Cardinal Brass Quintet
 1992 Manhattan Brass
 1991 Helios
 1990 Resounding Wind
 1989 Prism Sax Quartet
 1988 Saturday Brass
 1987 (not published)
 1982 Cincinnati Trombone Quartet

Senior Wind Third Prize

2004 Third Rail Saxophone Quartet, Mystic, CT
 2003 The Taliesin Trio, Ann Arbor, MI
 2002 A Few Good Reeds, Indiana, PA
 2001 BALA, Boston, MA
 2000 Millennium Quartet, University of Illinois,
 Urbana, IL
 1999 Red Stick Saxophone Quartet
 1998 Arbor Trio
 1997 Enigma Saxophone Quartet
 1996 Quake City Camerata
 1995 Transcontinental Sax Qt.
 1994 Trio Selka-Kosower-Ohio
 1993 Palo Alto Brass Quintet
 1992 Hauson Wind Quintet
 1991 Southspoon Wind Qt.
 1990 Mercury Wind Quintet
 1989 Meliora Brass Quintet
 1988 Manhattan Wind Quintet
 1987 (not published)
 1982 (no 3rd prize)

Honorable Mention

2001 Tre Cellesti
 2001 Favriale Piano Quartet
 1998 Sirens Saxophone Quartet
 1998 Florestan Trio
 1998 Rosalie Weinstein Woodwind Quintet
 1998 Picasso String Quartet
 1998 Blakemore Trio

Junior 1st Prize

2004 Rattan Trio, Highwood, IL
 2003 Ottava String Trio, Chicago, IL
 2002 Orion Piano Trio, Fort Sheridan, IL
 2001 LeConte Quartet
 2000 Capriccio Quartet
 1999 Fine Arts Trio
 1998 MYA String Quartet
 1997 Cumberland String Quartet
 1996 MYA String Quartet
 1995 Amaryllis String Quartet
 1994 Schon Musik
 1993 La Strada String Quartet
 1992 Lake Shore String Quartet
 1991 Greenfield String Qt.
 1990 Peabody Prep Piano Qrt.
 1989 Phoenix Quartet
 1988 The Diller String Quartet
 1987 Cardinal Quartet
 1986 Music Center Youth Quartet
 1985 ASTEC Quartet
 1984 Rydell Quintet
 1983 Music Center Quartet
 1982 The String Quartet
 1981 Medelsohn Piano Trio
 1980 Interlochen String Quartet
 1979 Rhee Gustavsson
 1974-1978 (No records found)

Junior 2nd Prize

2004 Northway Quintet, New York, NY
 2003 Subito Trio, Chicago, IL
 2002 Vidancia Trio, Bethesda, MD
 2001 Versailles Piano Quintet
 2000 Harding Trio
 1999 T3
 1998 Waughtown Four Cello Quartet
 1997 Musika Trio
 1996 The Rose Trio
 1995 Amaranth Trio
 1994 Midwest Young Artists' Sextet
 1993 Casulana Quartet
 1992 Best Great Quartet
 1991 Lake Shore Piano Qt.
 1990 Thanatos String Quartet
 1989 The Robinson Trio
 1988 The Lorax String Quartet
 1987 Premier Trio
 1986 New School of Music Trio
 1985 LeJuMa Piano Trio
 1984 LeJuMa Piano Trio
 1983 Clay-LaSalle Trio
 1982 John Adams Quartet
 1981 Brass Trio
 1980 (No records found)
 1979 (No records found)
 1978-1974 (No records found)

Junior 3rd Prize

2004 Pandora's Trio, Chicago, IL
 2003 LeMonde Trio, Interlochen, MI
 2002 Ivory Winds, Chicago, IL
 2001 Trio Una Corda
 2000 Karma Quartet
 1999 Biava Quartet
 1998 Firebird Quartet
 1997 MYA Chonky String Quartet
 1996 The Fidelius Trio
 1995 Russian Quartet
 1994 Interlochen String Quartet
 1993 Sigma
 1992 Die Furellum Quartet
 1991 The Thorne Trio
 1990 The Thorne Trio
 (1st year 3rd prize awarded)

Until 1987, the wind and string categories were not separated; wind and string ensembles competed against each other for the top prizes. Following is a list of winners, which will include both wind and string ensembles. Note: 1982 was an isolated year in which the two categories were separated.

Fischhoff Competition First Prize

1986 Cassatt String Qt, NYC
 1985 Asbury Brass Quintet, Evanston, IL
 1984 Meliora Quartet, Rochester, NY
 1983 Casella Quartet, Rochester, NY
 1982 (See String/Wind prize list)
 1981 Curtis String Quartet, Phil. PA
 1980 Vaener String Trio, Boston, MA
 1979 Taylor St Qt, Berrien Springs, MI

Fischhoff Competition Second Prize

1986 Cavani String Quartet
 1985 Chamber Arts Quartet
 1984 BU Honors Wind Quintet
 1983 Ambrogio Trio
 1982 (See String/Wind prize list)
 1981 Landreth Quartet
 1980 Martinu Piano Quartet
 1979 Csardas Quartet

Fischhoff Competition Third Prize

1986 Quintessence
 1985 FrancisEan Quartet
 1984 Stony Brook Trio
 1983 New Mode Trio
 1982 (No 3rd Prize)
 1981 " " "
 1980 " " "
 1979 " " "

HISTORY OF GEOFFROY WINNERS

For almost two decades Kenneth Geoffroy was an originator of ideas and activities in the arts in Michiana. In 1967, he left his native Kansas to become Coordinator of Fine Arts for the South Bend Community School Corporation, a position he held until his untimely death in 1982.

Ken Geoffroy was a fine trombonist and active performer in numerous area groups. He was instrumental in the creation of the South Bend Youth Symphony and the Fischhoff National Chamber Music Competition. Because of his efforts for these and other music programs, it is especially appropriate that friends of his have endowed an annual Geoffroy Prize for the best Junior Division ensemble from North Central Indiana and lower Michigan.

GEOFFROY PRIZE WINNERS

- 2004 – Hawthorne String Quartet
- 2003 – Hawthorne String Quartet
- 2002 – High Strung (string quartet)
- 2001 – One Accord (harp trio)
- 2000 – South Bend Youth Symphony Woodwind Quintet
- 1999 – South Bend Youth Symphony Woodwind Quintet
- 1998 – Floyd (piano trio)
- 1997 – South Bend Youth Symphony Woodwind Quintet
- 1996 – Fuhring Trio (piano trio)
- 1995 – Fuhring Trio (piano trio)
- 1994 – Suzuki Talent Education of Michiana String Quartet
- 1993 – no record found
- 1992 – Brio Brass Quintet
- 1991 – no award given
- 1990 – Sobeyosy Cesele
- 1989 – Olympia String Quartet
- 1988 – Newbury String Quartet
- 1987 – no record found
- 1986 – Clay High Brass Quintet

Shirk's Piano

- Largest Selection of Pianos in Michiana
- Family Owned and Operated for 48 Years
- Piano and Guitar Instruction
- Full Service Tuning, Repair and Moving
- Comprehensive Accessory Department with Printed Sheet Music, Computer Download Sheet Music, Lamps, Clothing, Gifts, Jewelry and many more Music Related Items
- Gift Certificates Available
- Support of Community Events for the Arts

Yamaha • Baldwin • Lowrey • Rodgers
Digital Pianos



2366 Miracle Lane
Mishawaka, IN 46545
800-260-0088



Rice University

The Shepherd School of Music

Robert Yekovich, Dean

VIOLIN

Raphael Fliegel
Kenneth Goldsmith
Sergiu Luca
Kathleen Winkler

VIOLA

James Dunham
Karen Ritscher

CELLO

Norman Fischer
Lynn Harrell

DOUBLE BASS

Paul Ellison
Timothy Pitts

FLUTE

Leone Buyse

OBOE

Robert Atherholt

CLARINET

Michael Webster

BASSOON

Benjamin Kamins

TRUMPET

Marie Speziale

HORN

William Ver Meulen

TROMBONE

David Waters

TUBA

David Kirk

PERCUSSION

Richard Brown

HARP

Paula Page

PIANO

Brian Connelly
Jeanne Kierman Fischer
Jon Kimura Parker
Robert Roux
C. Dean Shank, Jr.

ORGAN

Clyde Holloway

VOICE

Joyce Farwell
Kathleen Kaun
Stephen King

OPERA STUDIES

Janet de Chambrier
Debra Dickinson
Susan Dunn
Michael Franciosi

CONDUCTING

Hans Graf
Thomas Jaber
Larry Rachleff

WOODWIND ENSEMBLES

Leone Buyse
Thomas LeGrand
Janet Rarick
Michael Webster

COMPOSITION & THEORY

Karim Al-Zand
Anthony Brandt
Shih-Hui Chen
Arthur Gottschalk
Pierre Jalbert
Richard Lavenda
Kurt Stallmann

MUSIC HISTORY

Walter Bailey
Gregory Barnett
Marcia Citron
David Ferris
Honey Meconi
Anne Schnoebelen

With a dedicated
faculty of gifted artists,
extraordinary student
ensembles, beautiful
facilities, and an
affordable education
from one of America's
premiere universities,
The Shepherd School
of Music creates an
environment for
musical and intellectual
growth that is critical to
professional success.



RICE

For admission and scholarship information please contact: Matthew Loden, Director of Music Admissions,
The Shepherd School of Music, Rice University Post Office Box 1892 Houston, Texas 77251
713-348-4854 www.rice.edu/music Rice University is an EO/AA institution.



art in the air
since 1964

Congratulations to
the Fischhoff
on your
32nd Competition.

We're proud
to be your partners.



Burkhart

Outdoor Advertising · Electrical Signage

www.burkhartadv.com

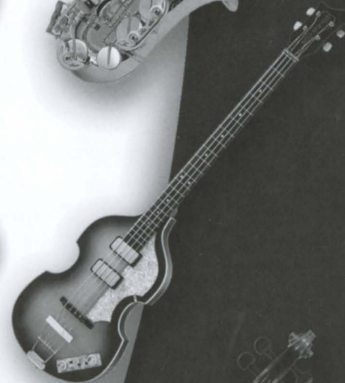
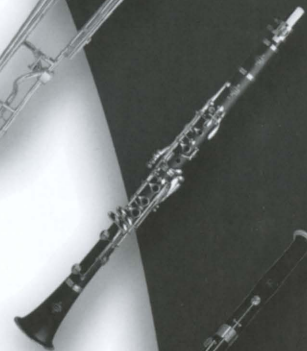
South Bend · Fort Wayne · Alexandria · Lafayette · Lincoln (NE) · St. Joseph (MO)

WHERE LEGENDS ARE CREATED

For over 175 years,
The Music Group's
respected affiliates have been
manufacturing some of the
world's finest musical instruments.
From the concert professional's
choice in clarinets...to the
choice of rock and roll legends...
our instruments offer the
perfect intonation, consistent
innovation and always
uncompromising craftsmanship
that you have come to expect.



www.musicgroup.com • 800.426.7068



FROM THE EXECUTIVE DIRECTOR...



When Fischhoff relocated to the campus of the University of Notre Dame in 2002, we knew there were plans to build a new performing arts center. We were assured that the Fischhoff Competition would be part of the new facility. I don't think any of us anticipated a building of this scope. The Leighton Concert Hall is a wonderful space for chamber music, and we are so pleased to be here.

It seems appropriate and natural to present an inaugural concert in this magnificent facility that highlights the achievements and abilities of the Fischhoff Gold Medal winners. We are so excited to be presenting the premiere Grand Prize Winner's Playoff Concert and Gala Reception on Sunday evening of the competition. In this format, the two top Gold Medal winners from the senior wind and string divisions will play that evening for the coveted grand prize medal. They will also receive \$7,500 in prize money, a Midwest Tour and several performances at the 2006 Emilia Romagna Festival

in Italy. The jurors have been asked to stay an extra night in order to hear the competitors in a concert format. We encourage you to consider attending this special event.

We are so fortunate to have a place and space where musicians of this caliber can have an experience like no other. Thank you to the University of Notre Dame for its graciousness in allowing us to use this new facility, and thank you to the musicians who provide the inspiration and necessity for great universities to build spaces like this. *We all win!*

For tickets to the Grand Prize Winner's Playoff Concert and Gala Reception, call 574-631-2800.

Ann Divine
Executive Director
Fischhoff National Chamber Music Association

Coming Events

August 2005: Emilia Romagna Festival—Italy,
featuring Jupiter String Quartet

August 26 or 27 (TBD), 2005: Twilight in the Pressbox,
Notre Dame Stadium Pressbox

October 14–22, 2005: Grand Prize Winner's Tour,
Illinois, Michigan and Indiana

October 31–Nov. 4, 2005: Arts-in-Education Residency
featuring the Imani Winds

November 11–14, 2005: Grand Prize Winner's Tour,
Michigan

December 6–10, 2005: Arts-in-Education Residency
featuring the Triton Brass

January 24–29, 2006: Arts-in-Education Residency
featuring the Fry Street Quartet

January 28, 2006: Fischhoff's Culinary Feast,
DeBartolo Performing Arts Center,
University of Notre Dame

July/August 2006: Grand Prize Winner's Tour, Italy,
featuring the 2005 Grand Prize Winner

IMPORTANT COMPETITION DATES

March 1, 2006: Deadline for entries into the 2006
Fischhoff National Chamber Music Competition

May 5–7, 2006: Fischhoff National Chamber Music
Competition



Fischhoff Staff





SUSAN WILSON

The Oberlin Conservatory of Music applauds
Violist Liz Freivogel '00
and her colleagues in the Jupiter String Quartet

on winning a chamber music trifecta:

Fischhoff National Chamber Music Competition *Grand Prize & Senior Strings Gold Medal (May 2004)*

Banff International String Quartet Competition *First Prize (September 2004)*

Young Concert Artists International Auditions *First Prize (January 2005)*



Liz joins the ranks of Oberlin's many chamber music laureates, among them:

Violinist & violist Matt Albert '96, flutist Molly Alicia Barth '97, percussionist Matthew L. Duvall '95,
pianist Lisa Kaplan '96, clarinetist Michael J. Macaferri '95 and cellist Nicholas Photinos '96 (eighth blackbird)

Violinist Daniel Ching '95 and cellist Joshua Gindele '97 (The Miró Quartet)

Violinists Sibbi Bernhardsson '95 and Simin Ganatra '96 (The Pacifica Quartet)

Violinist Rebecca McFaul '93 (The Fry Street Quartet)

OBERLIN

The Oberlin Conservatory of Music
A tradition of excellence



The pursuit of musical excellence is a journey that leads from the soul.

We recognize every effort because for over a century we've provided meticulously hand-crafted instruments for musicians of every level. Rely on the most reputable names in the industry for a performance that excels.

CONN - SELMER, INC.

We Make Legends.

Bach • Selmer • C.G. Conn
Leblanc • King • Holton
Armstrong • Ludwig/Musser
Glaesel • Scherl & Roth
Lewis • Emerson

© Conn-Selmer, Inc. A Steinway Musical Instruments Company

Elkhart, IN

www.conn-selmer.com